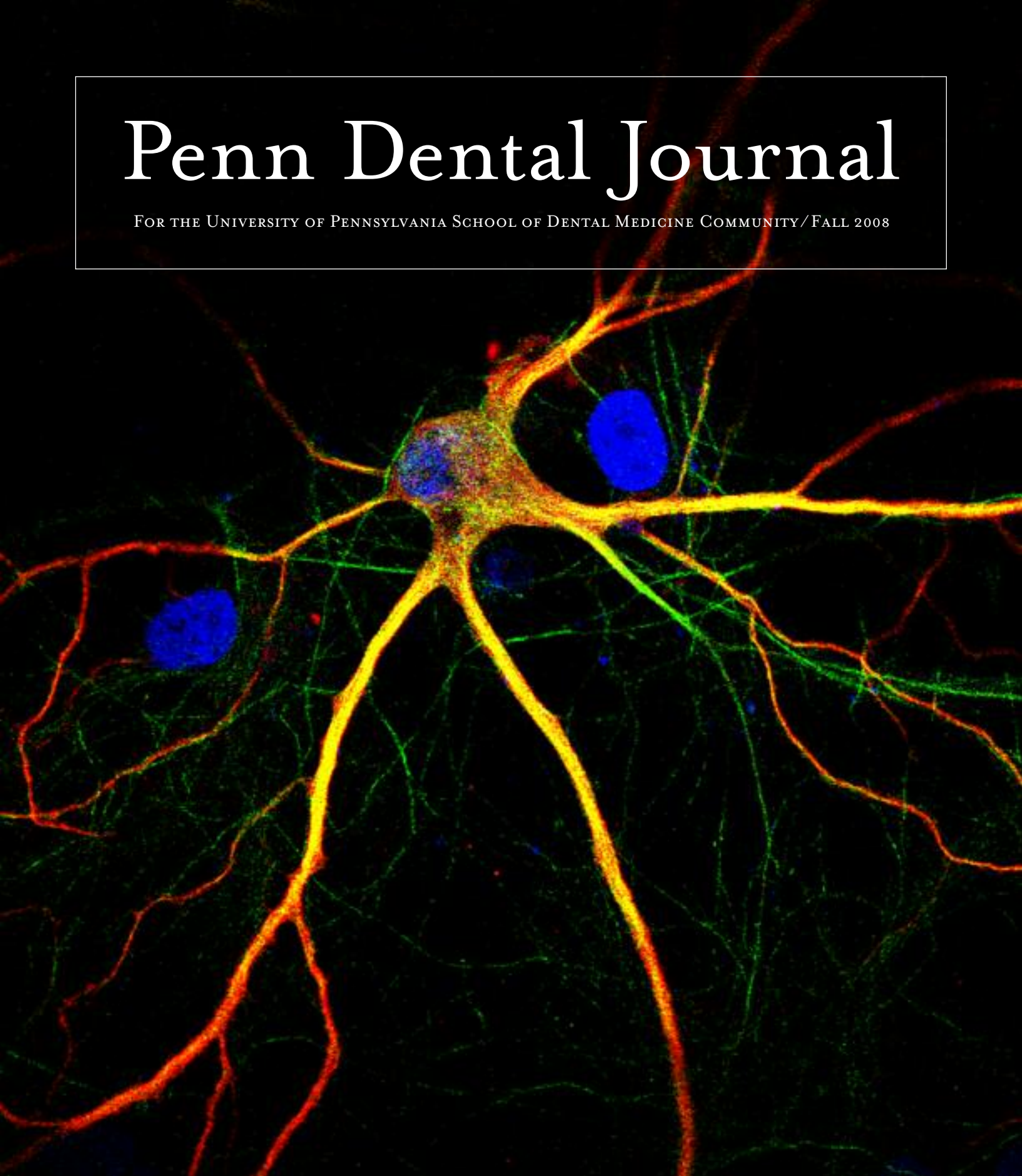


# Penn Dental Journal

FOR THE UNIVERSITY OF PENNSYLVANIA SCHOOL OF DENTAL MEDICINE COMMUNITY/FALL 2008



## FEATURES

**In a New Light: State-of-the-Art Imaging Technology Advancing Research Across Disciplines | PAGE 2**

Dr. William Cheung: New Chairman of the School's Board of Overseers | PAGE 6

Bridging the Gaps: Linking Health-Related Service with Interdisciplinary Training | PAGE 10

## IN THIS ISSUE

### Features

- 2 **In a New Light: State-of-the-Art Imaging Technology Advancing Research Across Disciplines**

BY JENNIFER BALDINO BONETT

- 6 **Dr. William Cheung: New Chairman of the School's Board of Overseers**

BY BETH ADAMS AND JULIANA DELANY

- 10 **Bridging the Gaps: Linking Health-Related Service with Interdisciplinary Training**

BY JULIANA DELANY



BRIDGING THE GAPS INTERNS LIKE ZANE HAIDER (D'11) SERVING THE COMMUNITY WHILE BUILDING AN INTERDISCIPLINARY PERSPECTIVE, PAGE 10.



ALUMNI WEEKEND 2008 HIGHLIGHTS, PAGE 33.

### Departments

- 14 **On Campus: News and People**  
23 **Scholarly Activity**  
25 **Philanthropy: Honor Roll**  
33 **Alumni: News and Class Notes**  
39 **In Memoriam**



WHITE COAT CEREMONY WELCOMES CLASS OF 2012, INCLUDING 12 LEGACY STUDENTS (KATHY KIM, SISTER OF FOURTH-YEAR STUDENT YOHAN KIM (D'09), ABOVE, AMONG THEM), PAGE 15.



**Penn**  
Dental Medicine

**Penn Dental Journal**  
Vol. 5, No. 1

**University of Pennsylvania**  
School of Dental Medicine  
[www.dental.upenn.edu](http://www.dental.upenn.edu)

**Interim Dean**  
THOMAS P. SOLLECITO, DMD

**Director, Publications**  
BETH ADAMS

**Contributing Writers**  
BETH ADAMS  
JENNIFER BALDINO BONETT  
JULIANA DELANY  
LISA DUGAN  
ALANDRESS GARDNER

**Design**  
DYAD COMMUNICATIONS

**Photography**  
CANDACE DICARLO  
MARK GARVIN  
PETER OLSON

*Penn Dental Journal* is published twice a year for the alumni and friends of the University of Pennsylvania School of Dental Medicine. ©2008 by the Trustees of the University of Pennsylvania. All rights reserved. We would like to get your feedback and input on the *Penn Dental Journal* — please address all correspondence to: Beth Adams, Director of Publications, Robert Schattner Center, University of Pennsylvania School of Dental Medicine, 240 South 40th Street, Philadelphia, PA 19104-6030, [adamsnb@pobox.upenn.edu](mailto:adamsnb@pobox.upenn.edu).

Office of Development and Alumni Relations, 215-898-8951

ON THE COVER: The School's growing Imaging Core Facility is advancing basic science research with state-of-the-art equipment for sample preparation, image acquisition, and image analysis and quantification. This neuron was captured with the laser confocal microscope, which can magnify up to 1,000 times and allow visualization of up to four molecules in a given image. The confocal offers a subcellular level image of cells and tissues, allowing quantification and colocalization of molecules within a cell (*image courtesy of Ms. Young Lee, working within the lab of Dr. Kelly Jordan-Sciutto, Associate Professor of Pathology*).

# A Message

FROM THE OFFICE OF THE DEAN

It is the growth and achievement of the entire Penn Dental Medicine community — alumni, faculty, students, and staff — that maintains the strength and leadership of this great institution, and I'm honored to be working in partnership with all of you as Interim Dean. Since assuming this role in July, I've been inspired by the support and engagement of so many and thank you for your shared commitment to the School. During this transitional period, I'm committed to continuing to move forward with those initiatives most important to the School at this time — setting and reaching new goals together within our education, research, and clinical programs. I also want to take this opportunity to wish Dr. Marjorie Jeffcoat all the best as she turns her focus to research and thank her for her service as Dean over the past five years. During that time, the School has had success on many fronts from which to build upon now as we look ahead.

One such success that I am pleased to report is the official notification from the Commission on Dental Accreditation (CODA) that our dental education program has been granted the accreditation status of "approval without reporting requirements," indicating the program achieves or exceeds the requirements for accreditation. The granting of this status occurred in July when CODA undertook a final review of the School's September 2007 site visit report. This positive accreditation reaffirms the great strengths of the School's programs and operations, and I congratulate and thank all for the fine work it reflects.

The School's strength in advancing our mission truly does depend upon building strong partnerships on so many levels and in this issue of the *Penn Dental Journal* we are pleased to share news on some of them. Dynamic partnership is perhaps nowhere more evident than within the School's research enterprise. Through unique funding programs from the University, Penn Dental Medicine has been able to acquire state-of-the-art equipment for an



## Building Partnerships

Imaging Core Facility that is integrating knowledge across disciplines within Penn Dental Medicine and throughout the University (see story, page 2). And through the interdisciplinary Bridging the Gaps internship program, Penn Dental Medicine students are teaming with community organizations and healthcare students from Penn and other area schools to serve low-income children and adults throughout Philadelphia, while building their own understanding of patient needs and challenges (see story, page 10).

Also in this issue, we introduce you to the new Chairman of our Board of Overseers — Dr. William Cheung (D'81, GD'82) — (see story, page 6). Dr. Cheung succeeds Dr. Martin Levin (D'72, GD'74), and I extend my appreciation to them both for their service to the School in this capacity. As a Penn Dental Medicine alumnus and seven-year member of the Board, Dr. Cheung brings a great passion for the School and dental education to this leadership role and a strong commitment to engaging the Board, especially as we work to reach the goals of the *Leading the Profession* capital campaign, the School's part of the University's *Making History* campaign. Dr. Cheung's gift to create The Cheung Family World Scholar Program through the Penn World Scholars program was among the first leadership gifts to the School's \$36 million campaign goal, which will build funds for student scholarships, faculty recruitment and retention, and the renovation of School facilities. I thank Dr. Cheung and the entire Board for their support and vital advisory role.

I look forward to working with them and the entire Penn Dental Medicine community to continue building partnerships that move Penn Dental Medicine forward on all fronts — education, research, and patient care — and I welcome and encourage input from all of you to help guide that process.

A handwritten signature in black ink that reads "Thomas P. Sollecito, DMD". The signature is fluid and cursive, with a stylized "T" and "P".

THOMAS P. SOLLECITO (D'89, GD'91)  
Interim Dean



# Feature

## In a New Light: State-of-the-Art Imaging Technology Advancing Research Across Disciplines

BY JENNIFER BALDINO BONETT



*Through University support, researchers at Penn Dental Medicine and across campus are seeing more and learning more with the high-tech equipment in the School's growing Imaging Core Facility.*

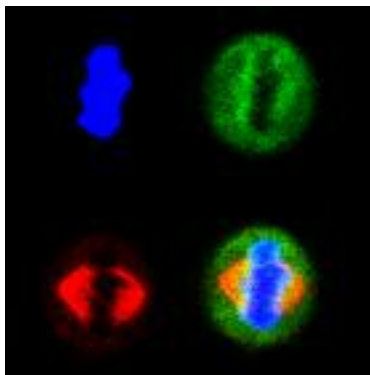
**B**OLD. SHARP. CLEAR. Over the past few years, recent advances in genetic and molecular technology have illuminated biomedical research, and the light shines brighter than ever at Penn's School of Dental Medicine. Here, researchers peer into the clearest views of internal cell structures, construct elegant 3D models of proteins, and analyze cellular characteristics with great depth and speed — just a few of the capabilities of Penn Dental Medicine's growing Imaging Core Facility (ICF), advancing research here and across the University.

"New technologies have altered both the paradigms under which our investigators operate and the experimental approaches they employ in their investigations," says Bruce J. Shenker, PhD, Associate Dean for Research at Penn Dental Medicine. "The ability to capture and analyze images obtained through a wide range of imaging technologies is critical."

At a faculty retreat in 2003, imaging technologies topped the wish list of Penn Dental Medicine researchers. "As we looked to the future development of our research activities, consensus evolved around the idea of developing a state-of-the-art Imaging Core Facility to provide support for sample preparation, image acquisition, and image analysis and quantification," explains Dr. Shenker, who soon after established the Committee for Strategic Research Planning to help facilitate the development of an ICF for the School.

Such facilities come at no small cost. Yet, the majority of funding would come from what some may consider a rather unusual source: the University of Pennsylvania. In an era of shrinking federal research dollars, infrastructure grants are hard to come by. However, University of Pennsylvania leaders are dedicated to supporting the sometimes formidable cost of research advancements. Three unique, intra-University grant programs offer funding opportunities to Penn's 12 schools for projects out of the realm of traditional external funding sources.

The School's Imaging Core Facility features state-of-the-art equipment for sample preparation, image acquisition, and image analysis and quantification.



Facilities like the ICF benefit the University research enterprise exponentially. While Penn Dental Medicine researchers can greatly build on their research strengths, the advantages don't end there. Core facilities are open to the entire University community, providing specialized technology and expertise to all biomedical researchers on Penn's notably interdisciplinary campus.

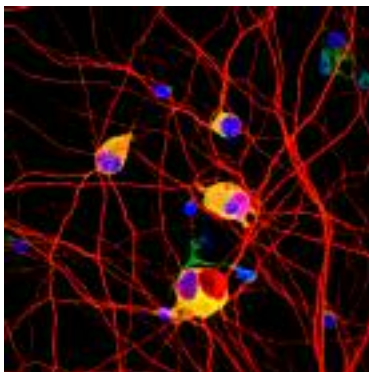
"One of the hallmarks of Penn as a first-rate research institution is the availability of core research facilities like the ICF," says Dr. Shenker. "These central facilities provide investigators with access to cutting-edge and emerging technologies which, for financial reasons, would otherwise not be affordable to an individual scientist or laboratory."

Commitment to enriching the University's research resources across disciplines and across schools has never been more essential, notes Steven J. Fluharty, PhD, Penn's Vice Provost for Research. Nationwide, federal funding for research and development is down, without a significant increase since 2004. Penn remains strong with a \$750 million research enterprise and the number two ranking in funding from the National Institutes of Health. However, biomedical inflation is pressing even on research-healthy institutions like Penn in the form of infrastructure costs, competitive salaries, and high-tech services.

"Failure to grow means losing purchasing power," explains Dr. Fluharty. "We need to stay at the top of our game in our ability to attract and retain the highest level faculty. We support research facilities that serve the needs of multiple disciplines and expect that these facilities will translate into increased federal funding."

In the past five years, the University has granted \$1.1 million in research support to Penn Dental Medicine for the ICF. The funding, which supplemented Penn Dental Medicine's \$50,000 contribution, has enabled the School's ICF to grow and develop significantly with the purchase of leading-edge equipment and the upgrading of existing technologies; highlights of the ICF follow.

**The Confocal Microscope** A nanotech wonder, the confocal microscope is critical and coveted equipment in biomedical research. In fact, Dr. Kelly L. Jordan-Sciutto, Associate Professor of Pathology and Director of the Penn Dental Medicine confocal core facility, describes it is an essential beam into 21st century research. Acquired in 2003, it was among the first major acquisitions of the School's ICF, costing \$280,000 with University resources covering 100 percent.



Surpassing conventional fluorescent microscopic imaging, the confocal microscope, with up to 1,000x magnification, offers a high-resolution, subcellular level image of cells and tissues, allowing quantification and colocalization of molecules within a cell. With a controllable depth of field, the confocal uses spatial filtering to eliminate out-of-focus light in specimens thicker than the plane of focus — revealing clean, high-resolution images down to the nanolevel and allowing investigators the ability to assess the proximity of two molecules within 50 nm to 300 nm of each other.

At Penn Dental Medicine, researchers are maximizing this new technology. In Dr. Jordan-Sciutto's study of neurodegeneration and pain management, the confocal helps her assess how molecules regulate pain and neuronal survival. Her research could lead to therapies for HIV encephalitis, Alzheimer's disease, and Parkinson's disease.

Dr. Carolyn Gibson, Professor of Anatomy and Cell Biology, uses the confocal to quantify cytoskeletal changes and study ameloblast development for the effects of fluoride on tooth development. And in his research on the effects of bacterial toxins in periodontal disease, Dr. Shenker uses the confocal for closer study of the mechanisms of cellular toxicity. Researchers throughout the University make use of the confocal as well.

"The ability to quantify data with the confocal makes this technology more powerful because it allows quantification of molecules within a specific cell or cellular compartment without disruption of the cellular integrity or architecture," says Dr. Jordan-Sciutto. "With the confocal, we have the ability to build upon biochemical data with a deeper understanding of how a protein, virus, or other biomolecule might behave in

different cell populations within a tissue — its normal biological context. Without this technology, our science could not move forward."

#### **The Transmission Electron Microscope (TEM)**

The ultramodern transmission electron microscope (TEM) is another biomedical powerhouse. With a resolution 1,000 times better than a light microscope and the ability to see structures and proteins at near-atomic levels, it brings a bold new

dimension to research.

"Such pieces of equipment reflect the way research is done today and the level of sophistication it requires," says Dr. Edward Macarak, Chair of the Department of Anatomy and Cell Biology, whose lab is home to the TEM, which was acquired in 2007 with the University funding 90 percent of the cost. As Dr. Macarak views the screen of this latest-generation TEM, he is able to see the smallest details of cell structure. In addition, the microscope has the capability to analyze and quantify elements present within the sample. Equally exciting, says Dr. Macarak, is a technique called cryoelectron-microscopy, which enables researchers to construct a 3D model of a protein for study, clarifying changes to the shape of the protein and revealing its function. This technique requires that the specimen remain frozen during observation and cannot be completed without specific types of extra equipment included in the new microscope.

**The Scanning Electron Microscope** This summer, Penn Dental Medicine upgraded a close cousin of the TEM — the scanning electron microscope (SEM) — advances funded in part through the University Research Foundation. The SEM complements the abilities of the School's new TEM, explains Professor of Biochemistry Dr. Ellis E. Golub. While the TEM reveals a cell's internal structure, the SEM shows the surface structure of a cell at up to 10,000x magnification.

Twenty years ago, the SEM was the height of research technology, unparalleled in its ability to reveal the surface structure of a sample. But as times and technology changed, the SEM sorely needed a make-over, and these latest upgrades greatly enhance its imaging and X-ray analysis capabilities for identifying and quantifying the composition of chemical samples.



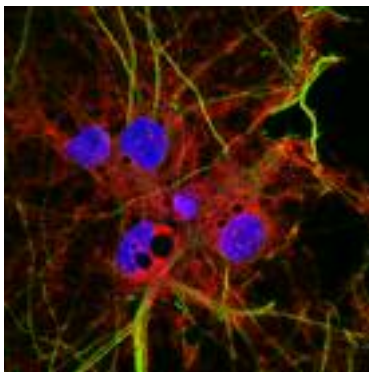
Dr. Golub uses the SEM in his studies of how the first crystals of calcium phosphate minerals are formed and deposited on the organic matrix of bone, dentin, and calcified cartilage. The microscope's X-ray analyzer allows him to locate calcium and phosphorous atoms in the sample, and to calculate the relative amounts of each, which is crucial to his experiments.

The SEM is a workhorse at the School of Dental Medicine. Dr. Edward Lally, Professor of Pathology, uses the powerful microscope in his study of leukotoxin, which kills human white blood cells and is considered a factor in Aa-mediated periodontal disease. The SEM has allowed Dr. Lally to analyze changes in white blood cells following toxin treatment.

Dr. Gibson has used the SEM in her study of the effects of fluoride on developing teeth. The original SEM could not "see" fluoride atoms, but the SEM upgrade should allow Dr. Gibson and her colleagues to better visualize the surface structure of fluoride, calcium, and phosphate in tooth samples.

**The Tissue Processing Facility** On the fourth floor of the Levy building, five boxy pieces of equipment don't even hint at the complex work within. Penn Dental Medicine's new tissue processing facility, which opened in 2006, has transformed the School's ability to produce tissue samples for research and training more rapidly and in great volume. The process, previously very labor-intensive and often taking days to carry out, now can be accomplished in one day. The tissue processing facility cost \$210,000. University funds covered 90 percent of the price tag.

**The Biacore** Another prime example of the potential of shared resources is the Biacore, an equipment acquisition for which the School of Veterinary Medicine shared half of the original cost. With unparalleled potential for basic science advances throughout the University, the Biacore allows researchers like Microbiology Chair Dr. Gary H. Cohen and Dr. Roselyn J. Eisenberg, who oversee the Biacore facility, to study biomolecular interactions in real time. The resulting data give insights into protein functionality, elucidate disease mechanisms, and provide the potential for drug therapies.



Drs. Cohen and Eisenberg, international experts on herpes simplex virus, smallpox, and vaccine development, are using the Biacore to further their state-of-the-art research.

**The Amnis Imagestream** The ICF's newest acquisition, the Amnis Imagestream, combines the visual power of microscopy and the statistical rigor of flow cytometry. "The powerful combination of quantitative image analysis and flow cytometry in a

single platform creates exceptional new experimental capabilities such as measuring the amount, location, and movement of molecules on, in, or between cells," says Dr. Shenker. The instrument was purchased in 2008 for \$250,000, fully funded by the University.

**Continuing a Penn Tradition** Interdisciplinary research has long distinguished the University and integrating knowledge remains a priority today as one of the principles of The Penn Compact — President Amy Gutmann's vision for the University.

"Penn is a national leader in biomedical research and training," says Dr. Fluharty. "With a long tradition of developing interdisciplinary research programs that cross academic and professional boundaries, Penn has a great advantage in research and the advancement of knowledge."

And that goes hand in hand with the University's commitment to support resources like the School's ICF. And also bodes well for its future development. "Biomedical research and training are among the top academic priorities at Penn, and it has made resources available for the development of state-of-the-art research to support them," adds Dr. Shenker. "Our ICF represents the University's continued investment in this shared goal."

What's next? According to Dr. Shenker, the Committee for Strategic Research Planning at the School of Dental Medicine will continue exploring new imaging technologies for future acquisition for the ICF. In fact, he recently submitted a grant to the National Institutes of Health for a state-of-the-art flow cytometer equipped with four lasers and capable of assessing up to 18 cell parameters simultaneously at a rate of over 5,000 cells per second. Onward and upward indeed. **PDJ**



Feature

# Connecting Globally and Locally

*Dr. William Cheung (D'81, GD '82), the new Chairman of the Board of Overseers*

BY BETH ADAMS AND JULIANA DELANY



T

HERE ARE MYRIAD WAYS TO describe Dr. William Cheung (D'81, GD '82). This Penn Dental Medicine alumnus is the owner of a thriving, multi-specialty dental practice in Hong Kong's downtown business district...an advocate for strengthening dental care in underdeveloped

areas around the world ... the father of two daughters who have made attending the University of Pennsylvania a family affair...a Trustee of the University of Pennsylvania... and, most recently, the newly appointed Chairman of Penn Dental Medicine's Board of Overseers. Yet, talking with him as he prepares to start his three-year term as Chair, it's one thing that's readily clear — he's eager to put an unyielding commitment to dentistry, education, and Penn to work in this latest leadership role.

"I have always been passionate about dental education, and I'm honored to be working with the School and my fellow Overseers in this new capacity," says Dr. Cheung, who's been a member of the School's Board for the past seven years and whose appointment as Chair is officially effective at the end of October, succeeding Dr. Martin Levin (D'72, GD'74). "We have a very talented and diverse group sitting on the Board right now. We all have different strengths and give in different ways, and whatever help we are asked to provide, I know that every member is committed to doing so."

**Ties Far and Near** Dr. Cheung himself brings a valuable dual perspective to the Chairmanship — one that is decidedly global, through his practice and international affiliations, and another that is uniquely local, through his strong ties to Penn, particularly as a University Trustee (a post he's held since January 2007). Internationally, he has been practicing restorative dentistry in his native Hong Kong since 1982, when he joined the practice of another Penn Dental Medicine alumnus, Dr. Philip Chan. After Dr. Chan's retirement in 1994, Dr. Cheung began to expand the size and scope of his practice, which today includes an oral surgeon, an endodontist, another restorative dentist, and a dental hygienist.

Despite the challenges of running and expanding a practice, Dr. Cheung has made continuing education a priority as well, becoming a respected lecturer and leader in program development throughout Hong Kong and beyond, first through the Hong Kong Dental Association, where he now serves as a member of the Professional Education Committee, and later recruited by the FDI World Dental Federation. He currently serves as the FDI's Continuing Education Program Manager for the Asia Pacific region, one

"There are a lot of developing countries we can establish relationships with — there are things they can learn from us, but there are also many things we can learn from them."

DR. WILLIAM CHEUNG (D'81, GD '82)

of five program managers worldwide, charged with organizing continuing education courses in their respective areas.

"The FDI is truly a global organization," he says of the Geneva-based conglomeration of nearly 200 dental associations worldwide. "They have a special mission — to help less developed countries upgrade their standards of oral health care — which is really my own passion as well. In the five regions with CE managers, there are less developed countries that need guidance with their CE programs, so that is my role within Asia Pacific — to identify topics and invite speakers from around the world who address their specific needs."

One of his goals as Chairman will be to help bring a strong global perspective to Penn Dental Medicine and the outlook of its students. "Through my involvement with the FDI, I feel a burden not only to help those countries that are not nearly as developed as places like Hong Kong and the U.S, but also to make dental students aware of them," says Dr. Cheung, adding that he is a strong proponent of the School's international internship program and hopes to help expand it to include faculty exchange and joint research opportunities as well. "The School has already developed fantastic relationships with a lot of dental schools worldwide, but I would like to see even more. There are a lot of developing countries we can establish relationships with — there are things they can learn from us, but there are also many things we can learn from them."

### A Global Gift: Improving Dental Practices

**Worldwide** In keeping with his dedication to improving dental care around the globe, especially in developing areas, Dr. Cheung and his wife, Cathy, were among the first to establish a scholarship under the Penn World Scholars Program. One of the endowed funds created through the University's current "Making History" capital campaign, the World Scholars Program offers financial assistance to scholars from developing countries and valuable mentoring by Penn alumni from their home countries. Dr. Cheung's leadership gift to "Leading the Profession," Penn Dental Medicine's part of the University-wide "Making History" campaign, was announced last fall at the time of the campaign launch.

"This resource will be available to help individuals who are gifted and talented and have a record of success, so that they can come to a leading educational institution like Penn Dental to receive training," explains Dr. Cheung of The Cheung Family World Scholar Program. "The objective is for them to eventually go back to their own countries to educate their colleagues, thereby upgrading the standard of dental education there. It is very much in line with my work with the FDI and my vision of seeing Penn Dental connected with dental colleagues from around the world."

**"Leading the Profession"** Connecting with alumni to build greater involvement in and support for the "Leading the Profession" campaign is among Dr. Cheung's top priorities as Board Chair. As part of the University's "Making History" \$3.5 billion effort (which recently reached the \$2.13 billion mark), the School's "Leading the Profession" campaign has to date raised approximately 67 percent of its \$36 million goal toward facilities improvements, endowed funds for faculty recruitment and retention, and student scholarships.

"This is a very exciting time and Penn is an exciting place to be," says Dr. Cheung of the campaign and what it will make



"In order to effectively fulfill our role as advisors to senior management, we need to know the needs, views, and perspectives of all sectors of the School."

DR. WILLIAM CHEUNG (D'81, GD '82)

possible throughout the Penn campus. "We are thankful and appreciative to those who have already come forward with a contribution to make the University and Penn Dental even better." But, he adds, there is still a long way to go, and calls upon his fellow Penn Dental Medicine graduates to get involved.

"With this campaign, our one objective is to make the School a better educational institution," he says emphatically. "In order to do that, we need great facilities, the funds to support the best faculty, and scholarship money to attract the world's most promising students. As alumni, we need to come together in partnership with the School to achieve these goals."

**Building Unity, Looking Forward** The advisory role of the Board is also foremost in Dr. Cheung's mind at this time, particularly during this transitional period as a search is conducted for a Dean. He hopes the Board can serve as a unifying body for all constituents of the School throughout this process and beyond. "In order to effectively fulfill our role as advisors to senior management, we need to know the needs, views, and perspectives of all sectors of the School — faculty, department chairs, students, staff," stresses Dr. Cheung, who is also a member of the Search Committee for the Dean. "All of us on the Board will be trying our best to make ourselves available, and I encourage individuals to contact us as well. Hopefully, we will serve as a medium to unite all fronts so that we can move forward together."

While he recognizes the challenges facing dental schools across the country in filling senior academic positions, he trusts that the respected standing of the School and its programs will attract strong candidates for the deanship. And in the meantime, he has great confidence in the School's current leadership.

"The deanship is never a one-person role; it is a team effort, and we have a great team in place," observes Dr. Cheung. "Interim Dean Tom Sollecito, our senior faculty members, chairs, and associate deans are all fantastic, and with their leadership, the School will continue to excel and move forward."

**Penn Dental Students: "The Future of Our Profession"** As Dr. Cheung thinks about the long-term growth and strength of the School, he believes a key element begins with the relationships built with students throughout their four years of study. "A school is not a school without students. They are the future of our profession, our future colleagues, and the future supporters of the School when they become alumni," he stresses. "From day one, we must treat students as professionals and build positive feelings about this institution and their educational experience. If we establish strong, professional relationships with students from the beginning, those ties can last throughout their careers, and in turn, continue to build ongoing support for the School and future generations of students."

Doing what he can to help support such an environment is a goal of Dr. Cheung's during his tenure as Chairman, and a personal one as well as the father of two Penn students — Stefani (C'08, D'11), a second-year student at Penn Dental



DR. WILLIAM CHEUNG AND WIFE CATHY WITH DAUGHTERS LIANA (C'11) AND STEFANI (C'08, D'11), LEFT TO RIGHT, AT THE *LEADING THE PROFESSION* CAMPAIGN LAUNCH IN OCTOBER 2007.

Medicine, and Liana (C'11), an undergraduate at Penn. As both Board Chair at Penn Dental Medicine and a University Trustee, he couldn't be a finer example to them of giving back to his alma mater.

Talking with him today, it's hard to imagine a stronger advocate for the School. When home in Hong Kong, his car proudly sports a "PENN DMD" license plate, and wherever his world travels take him, he makes it a point to network with Penn Dental Medicine alumni. "Whenever I meet alumni in my work or travels, I talk about the School. If people have lost touch, I tell them they must come back and visit the School and see all the great strides being made," he says. "And at home, it's wonderful to meet with students from Penn Dental who come to Hong Kong almost every year. We sit down in my office and chat over lunch and have a great time."

"This is an exciting and dynamic time to be in dental medicine," adds Dr. Cheung. "I have a lot of confidence and optimism about the profession and Penn Dental." **PDJ**



# Feature

## Bridging the Gaps

*Through Bridging the Gaps, an internship program that links health-related service with interdisciplinary training, Penn Dental Medicine students reach out to Philadelphia's neediest neighborhoods — and receive huge rewards in return.*

BY JULIANA DELANY



*My experience with Bridging the Gaps was a great influence not only on my post-graduate career decision to stay involved in public health, but also on my relationship with Philadelphia communities.*

DR. CARINA WOHL (D'07), STAFF DENTIST, SOUTH WEST PHILADELPHIA'S HEALTH ANNEX

Jessica Marinoff (D'10) looked out at the faces in her seminar audience, a group of summer campers from a North Philadelphia homeless shelter. They were there to learn about effective oral hygiene, and Ms. Marinoff knew that to reach them her presentation would have to be dynamic and fun. Soon all of the kids were wearing gloves and masks as they learned about dental exams, and there were smiles all around.

Meanwhile, across town, Allison Clark (D'10) was also hard at work, traveling some of Philadelphia's toughest streets in the MOMobile minivan, engaging young mothers in discussions about Sudden Infant Death Syndrome, smoking cessation, and good nutrition, and setting up free cribs for babies in need.

It was the summer of '07, and Ms. Marinoff and Ms. Clark were in the midst of their seven-week internships

through Bridging the Gaps, one of many community service learning program options available for Penn Dental Medicine students. Ms. Marinoff was assigned to the Dental Center at Eleventh Street Family Health Services, a nurse run facility in North Philadelphia. In her internship program, Jessica was responsible for addressing a different audience from this community each week, from new mothers in neonatal programs to kids at summer camp. Ms. Clark's assignment was with Cribs for Kids, a component of the city's Maternity Care Coalition, which focuses on delivering cribs and education to families at risk for SIDS in Philadelphia.

For both students, the work was physically and mentally challenging, taking them outside the comfort zone of Penn, where they were used to dealing with other dental students and professors, and introducing them to the real faces of community healthcare. It was an education they could not have received in any classroom.

## Bridging the Gaps

### A Culture of Community Service

Since the early 1990s, service has been an integral part of a Penn Dental Medicine education. Currently, 70 hours of community work are part of four required courses at each year of the dental curriculum: eight hours the first year, six hours the second year, 16 hours the third year, and 40 hours the fourth year. "We view community service learning activities as integral to the dental student experience at Penn," explains Dr. Joan Gluch, Director of Community Health at Penn Dental Medicine.

In addition, she notes that students bring a fresh sense of energy to community work, and provide additional

their health. It is this idea of 'give and take', as well as the desire to create an interdisciplinary community service experience, that inspired the founding of Bridging the Gaps in 1991, says Dr. Gluch.

"Bridging the Gaps started out as a School of Medicine program; however, in its third year, faculty members began to look at community experiences for their students with an eye toward developing an interdisciplinary approach," she explains. "When the dental school was invited to participate, we accepted eagerly." Bridging the Gaps originated at Penn, but is now a multi-institutional collaboration, which in Philadelphia includes Drexel, Jefferson, Philadelphia



PARTNERING WITH BRIDGING THE GAPS HAS BEEN GREAT FOR OUR SITE AND THE COMMUNITY WE SERVE. THE STUDENTS PROVIDE EDUCATIONAL SERVICES FOR THE CHILDREN THAT THEY WOULD NOT GET OTHERWISE.

LORRAINE THOMAS, OPERATIONS MANAGER,  
THE HEALTH ANNEX AND MYERS RECREATION CENTER

manpower for community organizations whose resources are often limited. In return, students gain new skills, valuable contacts, an appreciation for the real world of work, and perhaps most importantly, a sense of the challenges facing many individuals in the community.

"Through community-based activities, our students get to know individuals in the community and what they face on a daily basis," Dr. Gluch says. "By walking in the shoes of their potential patients, they have a chance to see them as real people."

### Give and Take Across All Disciplines

The real-world experiences and rewards that students receive from the Bridging the Gaps Community Health Internship Program and other community experiences are balanced by the positive effects their work has on the communities they serve, whose members learn the principles and practice of caring not only for their teeth and gums, but for all aspects of

College of Osteopathic Medicine, and Temple. Students from Bryn Mawr, LaSalle, and University of the Sciences also participate. Over the years, the Philadelphia program has been disseminated to Pittsburgh, Erie, New Jersey, and Delaware, and has been recognized by the American College of Physicians and the American Red Cross, among others.

True to its mission, Bridging the Gaps brings many disciplines together — dental students in a placement might work not only with students from other schools, but with students from other fields as well. Medical, dental, and nursing students come together with students in social policy and practice and even art therapy, sharing the unique perspectives on patient care that their disciplines provide. Placements for Penn Dental Medicine this year included 10 community service organizations throughout the city (see page 13, for a complete list). In addition to working with their host organizations, students also attend weekly seminars led by community health and social

## Bridging the Gaps

service professionals to hone their newfound skills and develop a deeper understanding of important community issues.

"Students who participate in Bridging the Gaps experience communities through the eyes of their residents, while working and learning with their future health and social service professional colleagues," says Lucy Tuton, Executive Director of Bridging the Gaps citywide. "As a result, students broaden their definition of what constitutes health. They gain a deeper understanding of the complex factors that impact physical well-being and gain skills in collaboration with diverse partners that can only strengthen their professional development."

level, violence, literacy, employment status, income, and so many more things that are not always apparent at first," she says. Her experience, though short in length, has influenced the way she approaches her coursework and ultimately, the way she will practice dentistry.

This past summer, a new crop of Penn Dental Medicine students gained similar benefits at Bridging the Gaps placements throughout the city. One of these was Keren Levine (D'11) who worked at the Myers Recreation Center and The Health Annex, a community health clinic serving the uninsured and underinsured of Southwest Philadelphia. There,



THROUGH COMMUNITY-BASED  
ACTIVITIES, OUR STUDENTS  
GET TO KNOW INDIVIDUALS  
IN THE COMMUNITY AND WHAT  
THEY FACE ON A DAILY BASIS.

DR. JOAN GLUCH  
DIRECTOR OF COMMUNITY HEALTH

### New Perspectives on Dental Care

"When I was looking at dental schools, I chose Penn Dental Medicine because I wanted my patient community to be as diverse as possible," remembers Ms. Clark. "I was eager to explore Philadelphia's communities, and Bridging the Gaps offered the means to do so in an academic and meaningful way." Through her internship, she has gained skills and built relationships that will serve her throughout her career.

Ms. Marinoff agrees. A year after her internship ended, she is using the experiences she took away from her Bridging the Gaps assignment every day. "From my fieldwork and through the weekly seminars I learned that a person's health status may be affected by so many factors: living conditions, neighborhood, family structure, age, race, education, activity

she taught health lessons on safety topics to children ages two to 12. Levine also helped The Health Annex implement a community health fair.

"Before this experience, I never thought about community dentistry per se," Levine says. "However, I am now interested in doing more community service this year, and down the road I see myself possibly working at a community clinic once a week. I went into dentistry because I wanted to help people in need, and community dentistry would be a great atmosphere in which to do that." Levine's Bridging the Gaps internship has also inspired her to organize a community service project through Penn Dental Medicine's fraternity, Psi Omega.



### A Career-Shaping Experience

Sometimes, Bridging the Gaps makes such an indelible mark on a student that it literally shapes her future. When Dr. Carina Wohl (D'07) was a student at Penn Dental Medicine, she spent a summer as a Bridging the Gaps intern, working with the Injury Free Coalition of Children's Hospital of Philadelphia and Neighborhood Bike Works on projects relating to mobile safety throughout the city. Now, in her new position as part of the dental team at Southwest Philadelphia's Health Annex, she feels she has come full circle in this community oriented practice.

"My experience with Bridging the Gaps was a great influence not only on my post-graduate career decision to stay involved in public health, but also on my relationship with Philadelphia communities," she explains. "With greater understanding of the city's needs and expectations, as well as behavioral patterns and some of its struggles, my choice to continue serving these communities was seamless and comfortable. I still explore and learn from the communities where I work, a relationship that began during the summer of 2004 through Bridging the Gaps." **PDI**



*I went into dentistry because I wanted to help people in need, and community dentistry would be a great atmosphere in which to do that.*

KEREN LEVINE (D'11)

2008 BRIDGING THE GAPS INTERN

### SERVING THE COMMUNITIES OF PHILADELPHIA

This past summer, Penn Dental Medicine students took part in Bridging the Gaps internships at the following sites throughout the city:

- **Children's Crisis Treatment Center:** addresses the effects of abuse, neglect, traumatic events, and other challenges to early childhood development.
- **Public Citizens for Children and Youth (PCCY):** develops and implements health advocacy programs for children in the Philadelphia region.
- **11th Street Family Health Services Dental Clinic:** a community health center that provides affordable and convenient health care.
- **Maternity Care Coalition Cribs for Kids:** supplies cribs and offers educational programs regarding safe sleep practices, safe cribs, and other health programs of interest to new parents.
- **The Health Annex and Myers Recreation Center:** a neighborhood health center offering comprehensive health, education, and social services on a sliding fee scale.
- **Consortium Chestnut Club House and PRIDE (People Rediscovering Independence, Dignity and Excellence) Program:** provides support and education for adults who have recently undergone psychiatric hospitalization.
- **Cobbs Creek Primary Care Center of the Children's Hospital of Philadelphia:** a neighborhood health center that provides high-quality pediatric health and education programs to local residents.
- **Brother Rousseau Academy:** an intensive, community-based day treatment program for court-committed, pre-adolescent males and females.
- **Hall Mercer Child and Family Unit:** a health, education, and training program for residents with mental health and retardation issues.
- **Health Federation Early Head Start:** a child development and family support program for pregnant women and families with children from birth to 3 years of age.

# On Campus

## NEWS

### Restorative Department Hosts Excellence in Esthetic Dentistry Lecture Series

On June 4, Dr. Francesca Vailati, Senior Lecturer at the University of Geneva School of Dental Medicine, visited Penn Dental Medicine, lecturing to students and faculty on *Full-Mouth Adhesive Rehabilitation of a Severely Eroded Dentition: The Three-Step Technique*. An international expert in the field of restorative dentistry, Dr. Vailati's visit was among a series of special presentations on esthetic and restorative dentistry hosted by the School's Department of Preventive and Restorative Sciences as part of its "Excellence in Esthetic Dentistry Lecture Series," an initiative launched last academic year with plans for ongoing growth and development.

"New techniques and technologies are continually changing restorative dentistry and hearing directly from clinicians and researchers leading the field is important for our students and faculty," says Dr. Markus Blatz, Chair of the Department of Preventive and Restorative Sciences. "These lectures go hand-in-hand with many other special educational resources offered by the Department to make sure that we are at the cutting edge of modern restorative dentistry."

Among the other visiting lecturers were Dr. Inaki Gamborena, one of the most prominent esthetic clinicians and educators in the world, of San Sebastian, Spain, and the University of Washington, Seattle, presenting *Mastering Restorations in the Esthetic Zone*; Kimiyo Sawyer, President of CUSP Dental Laboratories, Boston, who spoke two days on *Successful Lab Communication*; and Dr. Irena Sailer, world-renown clinician and researcher in the areas of esthetics, ceramics, and CAD/CAM technology, from the University of Zurich, who presented

*Tooth- and Implant-Supported All-Ceramic Reconstructions: Clinical Results and Scientific Approach at the University of Zurich*.

The lectures were held over lunch and open to all students and faculty. The "Excellence in Esthetic Dentistry Lecture Series" will continue as an ongoing program of the Department of Preventive and Restorative Science, with the schedule of presentations for the 2008–2009 academic year under development.

### ASDA Publication Receives National Newsletter Award

Penn Dental Medicine's student-run publication has been in the headlines, recognized nationally with the Distinguished Chapter Newsletter Award from the American Student Dental Association (ASDA). The Award was presented during the 2007 ASDA Annual Session, held in Ft. Lauderdale, Fla.

Published each semester, the newsletter, *Eruption*, serves as a communication tool for ASDA members, featuring articles about students' learning experiences, presenting news on local and international community service projects, and spotlighting student achievements. *Eruption* also covers current medical and dental trends and scientific findings, and informs students about the organization's national initiatives and upcoming events at the School. Content for the publication is primarily created by members of the ASDA Board; however, all students are encouraged to submit stories.

Founded more than five years ago, *Eruption* was submitted for award consideration by Sue Hwang (D'08), who served as editor-in-chief for two years. "I think the quality of the articles and overall presentation stood out from the other newsletters," says Dr. Hwang. "We were very honored and surprised to win the award."

The publication is distributed to all current students and placed around the School for faculty, staff, alumni, and visitors to read. The Office of Admissions also includes *Eruption* in interview packets given to visiting students. "The newsletter shows prospective students the diverse activities ASDA coordinates throughout the year and how involved members of the Penn Dental Medicine community are at the School," says Corky Cacas, Director of Admissions.

New editor-in-chief, Melissa Pauli (D'10), and *Eruption's* Executive Board, hope to provide the publication with a new, modern design during this 2008–2009 academic year and envision it becoming an even greater student resource. "*Eruption* is important to students at the School," says Ms. Pauli. "And we look forward to continuing its tradition."

### Endodontic Microsurgery Shown Live at AAE Meeting

Penn Dental Medicine's Department of Endodontics took center stage at the 2008 American Association of Endodontists (AAE) Annual Session, spotlighting its leadership role in endodontic microsurgery with a live satellite broadcast from the School's clinic to the meeting in Vancouver this past April. During an eight-hour broadcast, Dr. Syngcuk Kim, Chair of the Department of Endodontics, performed two implant and two surgical cases at Penn Dental Medicine, while Dr. Sam Kratchman, Clinical Associate Professor of Endodontics, provided commentary on the procedures and fielded questions with attendees in Vancouver. While this was the second year for such a broadcast from Penn Dental, it marked a first within the field of endodontics when presented at last year's AAE Annual Session in Philadelphia.

(continued on page 16)

## Special Events

### Dr. Samuel I. Shames and Hilda B. Shames Visiting Lecture

Penn Dental Medicine presented the annual Dr. Samuel I. Shames and Hilda B. Shames Visiting Lecture — now in its 27th year — on April 8. Dr. Marjorie Jeffcoat, Professor of Periodontics and former Dean of Penn Dental Medicine was the featured speaker, presenting *Osteoporosis and Periodontal Disease: Is there a relationship?* This free continuing education lecture series was established by Hilda Shames (DH'29) in memory of his husband Samuel to create a learning and networking resource for alumni, faculty, students, and other dental professionals in the region.



Members of the Class of 2012 celebrate at the White Coat Ceremony. The event speakers included (above left to right) Dr. Robert Collins, Interim Dean Thomas Sollecito, Dr. Spencer-Carl Saint-Cyr, and Provost Ronald Daniels.



Charlotte Shames Zimble with her grandson, Gary Scott Jr., and son-in-law, Gary Scott.

### GAPSA Welcome

The Graduate and Professional Student Assembly (GAPSA), the University-wide student government for all graduate and professional students, hosted a reception to welcome incoming graduate/professional students on September 3.



University President Amy Gutmann (center) and Director of PASS and Associate Dean for Clinical Affairs Dr. Uri Hangorsky (second from left) with some members of the School's new PASS class of 27 internationally trained dentists, who joined the Class of 2010 this fall.

### White Coat Ceremony

Penn Dental Medicine officially welcomed the Class of 2012 to the study of dental medicine with the School's White Coat Ceremony, held August 18 in the University's Zellerbach Theatre. Sponsored by the Penn Dental Medicine Alumni Society, this annual tradition holds symbolic significance for the incoming class as they receive a white coat and declare their commitment to assume the responsibilities of the dental profession.

This year's program included remarks by University Provost Ronald Daniels, Interim Dean Thomas P. Sollecito (D'89, GD'91), and Dr. Robert Collins (D'71), Chief of the Division of Community Oral Health; Dr. Spencer-Carl Saint-Cyr (D'97), President of the Penn Dental Medicine Alumni Society, served as the master of ceremonies.

Members of the Penn Dental Medicine Alumni Society Executive Committee (Drs. Ronald Gutman, D'74; Lawrence Levin, D'87, GD'92; and Dean Sophocles, D'87) and the School's Board of Overseers (Drs. Linda Gilliam, D'89; Martin Levin, D'72, GD'74; Lewis Proffitt, D'73, WG'80; and Louis Rossman, D'75, GD'77) presented the white coats along with

family members of the class's legacy students.

The 115-member Class of 2012 has 12 students with relatives who are Penn Dental Medicine alumni. They include Wesley Citron, son of Albert Citron (D'68); Muhammadali Dinani, nephew of Aejaaz Issa (D'99); Karim Kanani, sister of Aly Kanani (D'03); Caitlin Kauffman, daughter of Margaret Kauffman (DH'70); Jeremy Kay, son of William Kay (D'80); Kathy Kim, sister of Yohan Kim (D'09); Christopher Malloy, nephew of Anthony Quinn (D'70), Peter Quinn (D'74, GD'78), and Joseph Foote (D'74, GD'80); Justin Moses, son of Lawrence Moses (D'59); Raha Mozaffari, daughter of the late Eisa Mozaffari (GD'80, D'04); Stephen Phillips, son of Russell Phillips (D'75); Soleil Roberts, daughter of William Roberts (D'77) and Tanja deMarsche (DH'75, GD'81); and Michael Segall, nephew of Robert Segall (D'74).



(continued from page 14)

"I was involved with the program planning when the meeting was in Philadelphia in 2007 and offered to put together a live broadcast of a surgical case from our clinic as part of the program," explains Dr. Kim, noting that last year he did one microsurgery case on a lower, left first molar. "This had never been done at an AAE meeting, and it went over so well that the AAE approached us to do a full-day program this year, involving four cases."

Drs. Kim and Kratchman have been doing live surgeries at Penn Dental Medicine for 15 years as part of its Microsurgery Training Center (simulcasting from the clinic to a seminar room for small groups), though they both report that the satellite presentations took their teamwork to new levels. While Dr. Kim would narrate during most of the procedure, Dr. Kratchman was in Vancouver adding explanations as needed, taking audience questions, and managing the incorporation of other images onto the screen at various times throughout the procedures.

"We could have three separate images projected at once — our slides, the CT scan of the patient, and the live satellite," explains Dr. Kratchman. "And then, say if Dr. Kim was using an instrument that the audience couldn't see that well, I would give a thumbs up to the crew and they would have a picture of the instrument that would come up in the corner of the live feed."

"So the satellite is very complicated," adds Dr. Kim, "but it worked beautifully." The Vancouver presentation was done in two lecture halls with two sets of screens, drawing more than 500 attendees.

### **Masters in Public Health Added to Dual-Degree Programs**

Penn Dental Medicine is pleased to announce that a DMD-MPH dual-degree program has been approved in conjunction with the University of Pennsylvania's Master of Public Health (MPH) Program. Housed in the University's Center for Public Health



### **Congratulations Class of 2008**

Penn Dental Medicine held its 130th commencement exercises on Monday, May 19, conferring 146 DMD degrees. The graduation ceremony for the Class of 2008 took place in the University's historic Irvine Auditorium with Estelle Richman, Secretary of Public Welfare for the Commonwealth of Pennsylvania, presenting the commencement address.

Where are they now? Here is where you'll find these most recent alumni, according the Class of 2008's self-reported plans after graduation:

Advanced Education in General Dentistry/General Practice Residency	51
Armed Services	14
Endodontics Residency	2
MBA Program	1
Oral & Maxillofacial Surgery Residency	6
Orthodontics Residency	13
Pedodontics Residency	11
Periodontics (includes Perio & Perio/Pros) Residency	2
Private Practice	30
Prosthodontics Residency	2
Public Health	3
Teaching	1
Unreported	10

Initiatives, the addition of the MPH is the next step in the growth of the Department of Community Oral Health and should help to satisfy an increasing interest in dental public health from current and prospective students.

While the DMD curriculum has a community service learning component consisting of four community health courses each year, the dual-degree program offers students in-depth exposure and qualification in public health.

"There is a strong synergy between the DMD and MPH disciplines that students can experience and immediately apply with this program," says Dr. Robert Collins, Chief of the Division of

Community Oral Health and Director of the Office of International Health.

Another advantage for students is the opportunity for interdisciplinary studies and collaboration with a variety of faculty members at schools throughout the University. "Penn has a strong reputation for research," says Dr. Joan Gluch, Acting Associate Dean for Academic Affairs and Director of Community Health. "A student would benefit greatly from resourceful use of the many terrific opportunities here."

Students will be able to officially apply for the dual-degree program after the completion of their first year. The admissions process will be competitive

and dependent upon several factors, including good academic standing and a demonstrated interest in dental public health. Combined with the DMD, a total of 16 public health credits over five years will be required to obtain the dual-degree. Coursework from both disciplines will be integrated from the second through fourth years. The fifth year will consist of primarily MPH courses.

Career possibilities for those with MPH degrees crosses the spectrum from teachers and administrators to community health practice management, government work, or addressing public health needs anywhere there's a community focus. "The work of a dentist in private practice is defined by the aggregate of individual patients who are a part of that practice," says Dr. Collins. "The dentist who goes into a public health setting is expected to address the needs of an entire community."

Applications for the 2009–2010 DMD-MPH dual-degree program will be accepted beginning in March of 2009.

### **Students Building "Bridges of Health" Through Community Outreach Program**

Puentes de Salud means "bridges of health," and Penn Dental Medicine students are helping to provide just that at this latest addition to the School's community outreach programs. Serving South Philadelphia's burgeoning Latino population, Puentes is a free clinic held Thursday evenings in the basement of St. Agnes Medical Center on South Broad Street. Established in 2004 as a charitable partnership between the University of Pennsylvania's medical and nursing schools and the advocacy group Juntos, it has grown over the years to include services from students at Penn's School of Social Policy & Practice, the School of Law, and now, from Penn Dental Medicine as well. Dr. Steven Larson, a Professor at the School of Medicine, is the clinic's medical director.

"Dr. Larson felt there was a need for a dental aspect at the clinic and approached our Division of Community Oral Health (COH) about initiating

screenings," says Dr. Robert Collins, Chief of the Division. "So, we met with them and decided the best approach was to conduct preliminary screenings to evaluate the population and determine the areas of most need," adds Gloria Hwang (D'09), who with leadership from the Division of COH has facilitated the School's participation in this outreach program. "Ms. Hwang has been the real driving force behind this effort, both recognizing the great need, but respecting the limits of our ability to respond," notes Dr. Collins.

Ms. Hwang recruited approximately 15 other Penn Dental Medicine students, many of whom speak Spanish, to help in the screening process, which got underway in March 2008. Dr. Sara Simpser-Rafalin, Clinical Assistant Professor of Restorative Dentistry, and Dr. Andres Pinto, Assistant Professor of Oral Medicine, also gave their time to the project, supervising students during the screenings. "The extra effort they provided was essential," adds Dr. Collins.

As of last month, Ms. Hwang was beginning to review the findings with Dr. Collins, and Dr. Joan Gluch, Director of Community Health, so they can develop a plan for dental services at Puentes. "While it will be dependent on funding, our goal is to try to develop this as a possible site for providing basic preventive and restorative care," says Ms. Hwang, who explained the Division is exploring the possibility of getting mobile dental units that would allow for easy set up and break down the evenings of the clinic. "It has been an objective of Drs. Gluch and Collins to integrate more practical clinical experience for the students in different environments, and this would be an ideal opportunity to do that and provide much-needed care."

Currently, students complete clinical activities at two community rotations: the School's PennSmiles program, which features the PennSmiles mobile clinic outfitted with two fully equipped dental operatories; and Elwyn Institute Dental Center, which provides comprehensive dental

care for persons with disabilities at Elwyn's West Philadelphia Center at 40th and Markets Streets.

Ms. Hwang sees the interdisciplinary nature of Puentes as another learning opportunity. "I believe that dentistry is an integrated aspect of all health care and this puts us in a position to work with colleagues of different fields," she adds. "It is a great way for us as dental students to understand the whole integrated, interdisciplinary approach to helping a patient."

### **Penn Dental Medicine Holds Annual Research Retreat**

On June 20, Penn Dental Medicine faculty members, research postdoctoral fellows, and full-time graduate students gathered to share ideas and information about their individual research projects and activities at the third annual Research Retreat. Held at the Ace Conference Center in Lafayette Hill, Pa., more than 50 individuals participated in the event, focused on encouraging increased collaboration between basic science and clinical faculty members on future research projects, and solicitation of feedback from colleagues.

Each year, a keynote speaker is selected to talk about a topic relating to translational research. Dr. Bruce Shenker, Chair and Professor of Pathology and Associate Dean for Research at the School, filled in for scheduled guest Dr. David Wang from the University of Southern California, who was unable to attend the retreat. Speaking about the latest activities in his laboratory, Dr. Shenker shared that he has been able to harness the immunomodulatory potential of the bacterial toxin he discovered to function as a potential agent to control immune-mediated disorders, such as allergic reactions, through genetic engineering. The talk was titled *Development of a chimeric immunotoxin to inhibit PIP3-dependent mast cell activation and prevent the onset of antigen-induced allergic disorders.*

The clinical presentations featured the use of computer-aided design and

computer-aided manufacturing (CAD/CAM) in dentistry. The presenters included Dr. Markus Blatz, Chair, Preventive and Restorative Sciences, on *The resin bond to high-strength ceramic materials*; and Dr. Joseph P. Fiorellini, Chair, Periodontics, on *An evaluation of tissue biocompatibility and bone formation for a hydroxyapatite custom fabricated three-dimensional printed scaffold*. Topics by basic science faculty members included projects relating to the discovery of new proteins related to inflammation and oral disease; the pathogenesis of infectious disease; and work on therapies for fibrotic disorders. Those presentations included Dr. Kathleen Boesze-Battaglia, Associate Professor of Biochemistry, *The role of a newly identified protein, melanoregulin (MREG) in lysosome related organelle biogenesis*; Dr. Gary H. Cohen, Professor and Chair of Microbiology and Dr. Roselyn J. Eisenberg (GR'65), Professor of Microbiology, *The role of herpes simplex virus glycoprotein gB in virus entry into mammalian cells*; Dr. Edward Lally (GD'73, GR'79), Professor of Pathology, *The interaction of an RTX toxin with liposomal bilayer phospholipid membranes*; and Dr. Joel Rosenbloom, *Novel anti-fibrotic therapies*.

"All the talks at the retreat involve cutting-edge research in their respective areas," says Dr. Shenker. "The strength of Penn Dental Medicine is its diverse research expertise among both the basic science and clinical faculty." The next Research Retreat will be held on Friday, June 19, 2009.

### **SNDA Hosts Impressions Program for Undergraduate Minority Students**

On Saturday, March 1, Penn Dental Medicine's Student National Dental Association (SNDA) hosted its first annual Impressions Program, a student-run and organized initiative, taking place at dental schools across the country with SNDA chapters. The goal of the program is to increase exposure of the dental profession to undergraduate minority students and provide guidance for careers in the health sciences, with the vision of greater access to care in underserved communities.

Twenty pre dental and prehealth undergraduates from schools around the area, including the University of Pennsylvania, Drexel University, Temple University, West Chester University, and Community College of Philadelphia, attended the event. The day's schedule featured presentations by Penn Dental Medicine postgraduate students on the specialties of periodontics, pediatrics, oral surgery, endodontics, orthodontics, and oral medicine, and an introduction to the evolving field of general dentistry by current SNDA President Taj Haynes (D'09). Students also took impressions of teeth on dentaforms in the preclinical lab and worked on cavity preparations in the Advanced Simulation Laboratory. Additionally, they received advice about preparing for the Dental Admissions Test, tips on financing dental school, and participated in mock interviews. SNDA members also provide mentorship to students throughout the year to answer a variety of specific and exploratory questions related to the field.

"This program gives underrepresented minority students the opportunity to learn about and experience dentistry first-hand as a viable profession," says past-President, Michael

Simontacchi-Gbologah (D'08). "Those without exposure may not have a chance to see dentistry as a career option."

Penn Dental Medicine's Office of Minority Affairs helps sponsor the event and offers their own STEP (Short-Term Enrichment Program) each summer, directed to high school students across Philadelphia, to help increase the enrollment of underrepresented minorities and build a diverse workforce for the future of dentistry. The Impressions Program picks up at the next level for primarily college students who are interested in the health services. "While the SNDA's primary focus is on reaching out to African-Americans, collaborations with other cultural student groups and dental organizations are integral to our mission," says Mr. Haynes. "Our programs are open to anyone of interest."

The 2009 Impressions Program is planned for either February or March, as organizers look to increase next year's number of participants. "It's very important for young students to see minorities in these positions," says Dr. Simontacchi-Gbologah. "Hopefully these experiences help to open up doors for students and provide them with greater career possibilities."



Undergraduate minority students from five area universities attended the SNDA Impressions Program to learn about dentistry as a career option.



# On Campus

## PEOPLE



Left to right: Christine Bender (D'08), Farid Shaikh (D'08), Cheryl Lerner (D'82), Jessica Lynch (D'08), and Michael Simontacchi-Gbologah (D'08).

### Penn Dental Medicine Students Receive Leadership Award

The tradition of outreach and service to those in need continues to be a theme for graduates of Penn Dental Medicine. This year, four members of the Class of 2008 were honored with the Delta Dental Outstanding Student Leadership Award for their work and dedication to dental public health. Presented in the Sig Seigel Alumni Center during the Class of 2008 Commencement reception on May 19, the award recognizes leadership skills as demonstrated by a student's commitment to dental public service and outstanding accomplishments in the field of dentistry or related science during dental and predental education. Drs. Christine Bender, Jessica Lynch, Farid Shaikh, and Michael Simontacchi-Gbologah, each received a certificate and monetary award as this year's winners.

The Delta Dental Outstanding Student Leadership Award was presented by Dr. Cheryl Lerner (D'82), who exemplified its spirit while attending Penn Dental Medicine, succeeding academically and contributing to the community at large. "All four recipients had an intense level of excitement about helping others through the

professional skills attained at Penn," says Dr. Lerner. "I was so proud to see students focused on using their expertise and knowledge to make other people's lives better."

Dr. Bender, who always knew she wanted to serve in the field of dental public health, volunteered

from her sophomore to senior years as a coordinator at two programs run through the Jeff HOPE Center, the largest men's homeless shelter in Philadelphia. She performed oral screenings and made referrals in cases where greater care was required. Dr. Bender also worked at a program run through Penn's School of Medicine, geared toward the working poor population in Philadelphia without health or dental insurance.

"Outreach work was a great experience because it got me involved in the clinical part of my dental education earlier than the regular curriculum, which helped to put more meaning behind my didactic material," says Dr. Bender.

Currently, she is fulfilling her National Health Service Corps Scholarship as a general dentist at the Blackstone Valley Community Health Center in Pawtucket, R.I., helping low-income patients of Portuguese and Hispanic descent. "Working with people in underserved communities gives students a broader sense of what patients expect from a dentist," says Dr. Bender. "I am finding dentistry to be quite fulfilling and that my services are truly valued."

### Dr. Carolyn Gibson Receives William J. Gies Award

Penn Dental Medicine's **Dr. Carolyn Gibson**, Professor of Anatomy & Cell Biology, has earned special recognition for her lab's research as a 2008 recipient of the William J. Gies Award. Given annually by the International and American Associations for Dental Research, the Gies Award recognizes the best paper published in the *Journal of Dental Research* during the preceding year and is presented in three categories — biological research, biomaterials and bioengineering research, and clinical research.

Dr. Gibson received the award in the area of biological research as the corresponding author of "Transgenic Mice that Express Normal and Mutated Amelogenins" (*J Dent Res* 86(4): 331-335, April 2007). Presented during the International Association for Dental Research General Session, held



Dr. Carolyn Gibson

July 2–5 in Toronto, Dr. Gibson accepted the award on behalf of fellow Penn Dental Medicine faculty and staff who also contributed to the research project. They include Dr.

Faizan Alawi, Assistant Professor of Pathology; Melissa Aragon and Dr. Yong Li of the Department of Anatomy & Cell Biology; and Zhi-An Yuan, now retired from the Department of Anatomy & Cell Biology. Additional contributors include Bill Daly, Cynthia Suggs, and Dr. J. Timothy Wright of the University of North Carolina, and Dr. Ashok Kulkarni of the National Institute of Dental and Craniofacial Research. Recipients are selected from

nominations by IADR/AADR members, the Gies Award Committee, and the editor of the *Journal of Dental Research*.

### Restorative Department Adds Master Dental Technician

Penn Dental Medicine has added a new area of expertise to its Department and Preventive and Restorative Sciences with the hiring of **Michael Bergler**, who joined the School in June as Manager of Dental Laboratory Technology. In this new role, he will also direct the Penn Dental Medicine CAD/CAM Ceramic Center, now under development.

Mr. Bergler, a certified master dental technician, trained in Germany at the University of Erlangen-Nuernberg, Department of Prosthodontics, and earned his Certificate for Master Dental Technician (MDT) at the Masterschool of Freiburg in Breisgau, Germany. Prior to joining Penn Dental Medicine, he was a member of the Department of Prosthodontics at the School of Dentistry, University of Erlangen-Nuernberg, Germany. "I am honored that we were able to recruit one of the up-and-coming international stars in dental laboratory technology," says Dr. Markus Blatz, Chairman of the Department of Preventive and Restorative Science, who has had the opportunity to work with Mr. Bergler at various stages throughout his career, collaborating on numerous journal articles and presentations at international meetings.



Michael Bergler

"His tenure at Penn is not only a tremendous gain for the School, but for the whole dental community. This is a huge step to bringing our

Department to the forefront of modern restorative and esthetic dentistry."

Mr. Bergler will be involved in teaching and instruction at all levels,

from undergraduate preclinics to continuing education courses for practicing clinicians and laboratory technicians. "We believe that proper selection and close collaboration with the laboratory technician are absolutely crucial for success in restorative dentistry, yet currently, our curriculum does not reflect that sufficiently," notes Dr. Blatz. "With input from a world-class master technician, we will be able to strengthen our curriculum in that respect to educate a well-rounded dentist who has sound knowledge in up-to-date techniques and state-of-the-art technologies."

The Penn Dental Medicine CAD/CAM Ceramic Center, which Mr. Bergler will direct, will feature the latest CAD/CAM systems on the market and a state-of-the-art ceramic laboratory for fabrication of highly esthetic tooth- and implant-supported ceramic restorations. Space within the School has been allocated for the creation of the Center and construction is underway.

### Standing Faculty Promotions, Appointments

Penn Dental Medicine is pleased to announce two changes within its standing faculty — a promotion and a new appointment — both of which were effective as of July 1, 2008. In the basic sciences,

#### Dr. Kelly Jordan-Sciutto

was promoted to Associate Professor of Pathology. Dr. Jordan-Sciutto has been part of the School's standing faculty since 2001, when she joined the Department of Pathology as an Assistant Professor. She currently also serves as Director of the Penn Dental Medicine Laser Confocal Microscopy Facility and is active University-wide in a variety of roles, including serving as Chair of the Admissions Committee for the Neuroscience Graduate Group of



Dr. Kelly Jordan-Sciutto

Biomedical Graduate Studies and as a member of the Senate Committee on Students and Educational Policy.

Within the School's clinical departments, **Dr. Arthur Kuperstein** joins the standing faculty with an appointment of Assistant Professor of Oral Medicine-Clinician Educator. Dr. Kuperstein has been with the School's Department of Oral Medicine since 2002 as a member of the associated faculty, and since 2006, he has also served as Director of the Division of Radiology. In addition, he is Assistant Director of the School's Emergency/Admissions Clinic. During his tenure at Penn Dental Medicine, he has been the recipient of the Joseph L.T. Appleton Award for Excellence in Clinical Teaching (2006), the Departmental Appreciation Award for Outstanding Service to the Students (2008), and the Senior Outstanding Teaching Award (2008).

"We extend our congratulations to Drs. Kuperstein and Jordan-Sciutto on their professional accomplishments and our thanks for their service and commitment to the School," says Interim Dean Thomas Sollecito.

### Students Active in Research Through School's Summer Program

Second-year student **Kimberly Farrell (D'11)** was recognized by the Philadelphia Academy of Stomatology as a 2008 recipient of the Robert Burkhardt Memorial Award, presented in support of her research activities. Named in memory of Penn alumnus Dr. Robert Burkhardt (C'50, D'51), the award is given annually to a Penn Dental Medicine and Temple University dental student involved in clinical research; the Academy selects the Penn Dental Medicine recipient from those students participating in the School's Summer



Dr. Arthur Kuperstein

Research Program. Ms. Farrell conducted research this past summer under preceptor Dr. Frances Mante, Associate Professor of Restorative Dentistry.

"I always find giving these awards a pleasurable task," says Dr. Richard Wilson, a 1987 graduate of Penn Dental Medicine and member of the Academy's selection committee. "It's always great to see the research interests of the students and to get to know them as well; the Academy members encourage recipients to visit our offices."

Ms. Farrell's project — *the characterization of a resin-based endodontic root end filling material* — involved studying the physical properties of a Hydroxyethyl methacrylate-based apical seal composite as well as the effect of various antioxidants on the degree of conversion and polymerization.

The other student researchers participating in the 2008 Summer Research Program included:

**Anu Bhalla**, *Pro-inflammatory cytokine control of bone marrow stromal cells neural differentiation*, Dr. Sunday Akintoye, preceptor; **Li-Ping Chew**, *The effect of caspase-12 activity on apoptosis following masticatory muscle reload*, Dr. Elisabeth Barton, preceptor; **Justin Messina**, *Increased expression of insulin-like growth factor I in masseter muscle as protection against apoptosis and enhancement of repair*, Dr. Elisabeth Barton, preceptor; **Nina Tran**, *Histological analysis of mandibular condyle development in IGF-1 transgenic mice with muscular hypertrophy*, Dr. Elisabeth Barton, preceptor; **Sandhya Menon**, *Effect of chlorhexidine on bond strength of resin modified glass ionomer cement to caries-affected dentin*, Dr. Rose Wadenya, preceptor; **Rick Pan**, *Host cellular proteins as potential targets of antiviral therapies*, Dr. Yan Yuan, preceptor; **Scott Roemer**, *Identification of membrane induced changes in LtxA structure: a domain based approach*, Dr. Kathleen Boesze-Battaglia, preceptor; and **Raymond Shupak**, *Characterization of dentin matrix and mineralization at the dentinoenamel junction of murine type III collagen deficient teeth*, Dr. Pamela Howard, preceptor.

### Student Researchers Earn Top Marks For Poster Presentations

Penn Dental Medicine students **Heather Desh (D'10)**, **Ho-Jung Cho (D'10)**, and **Mansi Oza (D'09)** earned top marks for their research activities as the winners in the School's 17th Annual Oral Health Fair and Table Clinic, held May 1. Organized by the Vernon J. Brightman Research Society, Penn Dental Medicine's student research organization, the annual Table Clinic spotlights student research with poster presentations from participants in the School's Summer Research Program; 14 second- and third-year students from the 2007 Summer Program presented at this year's event.

Selected by a team of faculty judges, Ms. Desh took first place for her project, *Muscle load and its effect on apoptosis in murine*

*masseter muscle*, while second place went to Ms. Cho for *Distinctions in mechanical signal transduction in masseter muscles and the EDL muscle* (both working with preceptor Dr. Elisabeth Barton, Assistant Professor of Anatomy and Cell Biology). Ms. Oza was awarded third place for her project, *Dual regulation of mast cell function by TGF- $\beta$*  (with preceptor Dr. Hyder Ali, Associate Professor of Pathology). The top two winners will represent the School at two national meetings this fall. Ms. Desh will present her work in the 49th Annual American Dental Association (ADA)/DENTSPLY Student Clinician Research Program, held as part of the ADA Annual Session in San Antonio, October 16–21, and Ms. Cho will participate in the 2008 Hinman Student Research Symposium, taking place in Nashville, October 31–November 2.



OKU officers and 2008 inductees at the Senior Farewell.

### 2008 OKU INDUCTEES

The Penn Dental Medicine chapter of Omicron Kappa Upsilon National Dental Honor Society (OKU) inducted its newest members during Senior Farewell, held May 13. Established to promote and recognize scholarship and character among students of dentistry, the chapter selects inductees each year from the graduating class based on scholarship, exemplary traits of character, and potential qualities of future professional growth. The 2008 OKU inductees include: **Michael Armstrong**, **Sylvester Awagu**, **Marie Falcone**, **Madeleine Goodman**, **Miriam Habeeb**, **Blaine Keister**, **Suhn Kim**, **Feiya Li**, **Noah Orenstein**, **Lindi Orlin**, **Amanda Romsa**, **Bradley Schnebel**, **Sweta Shah**, **Ryan Shaw**, **Divya Venkataraman**, **Quyen Vu**, and **Yedeh Ying**. Dr. Arthur Kuperstein, Assistant Professor of Oral Medicine-Clinician Educator, was recognized with a Dental Faculty Honorary Award and **Corky Cacas**, Director of Admissions, received a Non-Dental Faculty Honorary Award.



# MAKING HISTORY

is easier than you think...



Penn Dental Medicine is tackling the problems of the 21<sup>st</sup> century and improving the lives of people across the globe. We need your help to push the frontiers of teaching, research and service and to redefine what people everywhere can expect from higher education.

Your legacy gift to ***Making History: The Campaign for Penn*** will help us to achieve this vision for current and future generations, making history not just today, but for all time. The long term support garnered from legacy gifts creates the endowments to fund the next generation of eminence.

You can create a legacy gift by including Penn Dental Medicine in your long term plans. Name us as a beneficiary under your will or living trust, or through a retirement plan or life insurance policy. By naming Penn Dental Medicine, you are helping us ensure our long term future and maximize the impact of your gift. You are making a difference, and Making History.

To learn more about the many ways to support Penn Dental Medicine through a legacy gift, contact Frank F. Barr, JD, Office of Gift Planning, at 800.223.8236 or visit [www.alumni.upenn.edu/giftplanning](http://www.alumni.upenn.edu/giftplanning).



Penn  
Dental Medicine

# Scholarly Activity

## Awards & Achievements

**Dr. Paul Berson (GD'77)**, Clinical Assistant Professor of Restorative Dentistry

- Recipient of the Joseph L.T. Appleton Award for excellence in teaching by a part-time faculty member, presented by the Penn Dental Medicine Class of 2008.

**Dr. Carolyn Gibson**, Professor of Anatomy & Cell Biology

- Recipient of the William J. Gies Award in Biological Research, presented by the International and American Associations for Dental Research (IADR/AADR), July 2008.

**Dr. Elliot V. Hersh**, Professor of Oral Surgery/Pharmacology

- Presented a keynote address *Supporting Marketing Claims: One Aspect of This Clinical Pharmacologist's Career* at the IADR 86th General Session in Toronto, July 2008.
- Recipient of the Basic Science Award for excellence in teaching within the basic sciences, presented by the Penn Dental Medicine Class of 2008.

**Dr. Nathan Kobrin**, Clinical Associate Professor of Restorative Dentistry

- Recipient of the Robert E. DeRevere Award for excellence in preclinical teaching by a part-time faculty member, presented by the Penn Dental Medicine Class of 2008.

**Dr. Arthur Kuperstein**, Assistant Professor of Oral Medicine-Clinician Educator

- Recipient of the Senior Outstanding Teaching Award for a faculty member who has gone beyond his/her responsibilities to significantly impact the class's educational experience, presented by the Penn Dental Medicine Class of 2008.

**Dr. Ernesto Lee (GD'87)**, Clinical Professor of Periodontics

- Inducted into the Greater New York Academy of Prosthodontics, December 2007.
- Speaker at the Academy of Osseointegration Annual Meeting in Boston, February 28–March 1, 2008.
- Speaker at the Puerto Rico Scientific Conference and Dental Exhibit in San Juan, Puerto Rico, February 2008.
- Speaker at the XXXIX Congreso Istmeno de Odontologia Panama Dental Association Annual Meeting held in Panama City, Panama, January 2008.

**Dr. Margrit Maggio (D'87)**, Assistant Professor of Restorative Dentistry-Clinician Educator

- Recipient of the Earle Bank Hoyt Award for teaching excellence by a Penn Dental Medicine graduate who is a full-time junior faculty member, presented by the Penn Dental Medicine Class of 2008.

**Dr. Alan Polson (D'94)**, Professor of Periodontics

- Recipient of the Distinguished Alumni Award from the University of Rochester and Eastman Dental Center in recognition of a distinguished academic career and major contributions to periodontics as an educator, mentor, and investigator, November 2007.

**Dr. Megan Pugach**, Anatomy & Cell Biology Postdoc

- Recipient of a 2008 AADR Bloc Travel Grant, presenting *Transgenic Mice that Express Amelogenin Lacking the C-Terminus* at the IADR 86th General Session in Toronto, July 2008.

## Selected Publications

*A selection of recently published work by Penn Dental Medicine faculty, who are indicated in bold.*

Awasthi S, Lubinski JM, **Eisenberg RJ**, Cohen GH, Friedman HM. An HSV-1 gD mutant virus as an entry-impaired live virus vaccine. *Vaccine*. 26:1195-1203.

Bergler M, Holst S, **Blatz MB**, Eitner S, Wichmann M. Telescope technology and CAD/CAM reconstructions for implant-supported restorations. *European Journal of Esthetic Dentistry*. 2008; 3(1):66-88.

Cao L, Bandelac G, Volgina A, **Korostoff J**, DiRienzo JM. Role of aromatic amino acids in receptor binding activity and subunit assembly of the cytolethal distending toxin of *Aggregatibacter actinomycetemcomitans*. *Infection and Immunity*. 2008; 76:2812-2821.

Dong L, Odeleye AO, **Jordan-Sciutto KL**, Winkelstein BA. Painful facet joint injury induces neuronal stress activation in the DRG: Implications for cellular mechanisms of pain. *Neuroscience Letters*. In press, 2008.

Eto AL, Joly JC, **Jeffcoat M**, de Araújo NS, de Araújo VC, Cury PR. Use of anorganic bovine-derived hydroxyapatite matrix/cell-binding peptide (P-15) in the treatment of class II furcation defects: A clinical and radiographic study in humans. *Journal of Periodontology*. 2007 December; 78(12):2277-83.

Evans M, Morine K, Kulkarni C, **Barton ER**. Expression profiling reveals heightened apoptosis and supports fiber size economy in the murine muscles of mastication. *Physiological Genomics*. In press, 2008.

Fogg, CN, Americo, JL, Earl PL, Resch W, Aldaz-Carroll L, **Eisenberg RJ**, **Cohen GH**, Moss B. Disparity between in vitro neutralization of

vaccinia virus by antibody to the A27 protein and protection of mice to intranasal challenge. *Journal of Virology*. 2008; June 4. (Epub ahead of print).ahead of print).

Forster CM, Sunga E, **Chung CH**. Relationship between dental arch width and vertical facial morphology in untreated adults. *European Journal of Orthodontics*. 2008; 30(3):288-294.

Geurs NC, **Korostoff JM**, Vassilopoulos PJ, Kang TH, **Jeffcoat M**, Kellar R, Reddy MS. Clinical and histologic assessment of lateral alveolar ridge augmentation using a synthetic long-term bioabsorbable membrane and an allograft. *Journal of Periodontology*. 2008 July; 79(7):1133-1140.

**Gibson CW**. The amelogenin "enamel proteins" and cells in the periodontium. *Critical Reviews in Eukaryotic Gene Expression*. 2008; 18:345-360.

**Gibson CW**, Li Y, Daly B, Suggs C, Yuan ZA, Fong H, Simmons D, Aragon M, Kulkarni AB, Wright JT. The leucine rich amelogenin peptide alters the amelogenin null enamel phenotype. *Cells Tissues Organs*. In press, 2008.

**Greenberg JR**. Can they really be opposite? A new look at four critical aspects of anterior dental morphology. *Compendium of Continuing Education*. 2008 September; 29:2-9.

**Greenberg JR**. Decision making in conventional fixed prosthodontics. *Prosthodontic Research and Practice*. 2008; 7:X-X.

Heldwein EE, **Krummenacher C**. Entry of herpes viruses into mammalian cells. *Cellular and Molecular Life Sciences*. 2008; 65:1653-1668.

**Hersh EV**, Moore PA, Papas AS, Goodson JM, Navalta LA, Rogy S, Rutherford B, Yagiela JA and the STAR Group (**Pinto A** and **Secreto SA**). Local anesthetic reversal with

phenolamine mesylate in adults and adolescents. Journal of American Dental Association. 2008; 139:1080-1093.

Holst S, Geiselhöringer H, Nkenke E, **Blatz MB**, Holst A. *Implant retained restorative solutions in patients with hypodontia*. Quintessence International. 2008; 39. In press.

**Iqbal MK**, Fillmore E. *Preoperative predictors of number of root canals clinically detected in maxillary molars: A Penn Endo database study*. Journal of Endodontics. 2008 April; 34(4):413-6.

**Iqbal MK**, Kim S. *A review of factors influencing treatment planning decisions of single-tooth implants versus preserving natural teeth with non-surgical endodontic therapy*. Journal of Endodontics. 2008 May; 34(5):519-29.

**Iqbal MK**, Ku J, Chan S. *Relative frequency of teeth needing conventional and surgical endodontic treatment in patients treated at a graduate endodontic clinic—A Penn Endo database study*. Oral Surgery, Oral Medicine, Oral Pathology, Oral Radiology, and Endodontics. 2008 July; 106:e62-e67.

**Jeffcoat M**, Watts NB. *Osteonecrosis of the jaw: balancing the benefits and risks of oral bisphosphonate treatment for osteoporosis*. General Dentistry. 2008 January-February; 56(1):96-102; quiz 103-4, 111-2.

**Karabucak B**, Kim A, Chen V, **Iqbal MK**. *The comparison of gutta-percha and resilon penetration into lateral canals with different thermoplastic delivery systems*. Journal of Endodontics. 2008 July; 34(7):847-49.

Komine F, **Blatz MB**, Yamamoto S, Matsumura H. *A modified layering technique to enhance fluorescence in glass-infiltrated aluminum-oxide ceramic restorations: Case Report*. Quintessence International. 2008; 39:11-16.

**Kuo L-C**, **Polson AM**, Kang T. *Associations between periodontal diseases and systemic diseases: A review of the inter-relationships and interactions with diabetes, respiratory diseases, cardiovascular diseases and osteoporosis*. Public Health. 2008; 122: 417-433.

**Lee E**. *Impression Making* (Chapter 8, pp 217-255) Aesthetic Restorative Dentistry: Principles and Practice by Tarnow D, Chu S, and Kim J. Montage Media Corporation. 2008.

Lezot F, Thomas B, Greene SR, Hotton D, Yuan ZA, Castaneda B, Depew M, Sharpe P, **Gibson CW**, Berdal A. *Physiological implications of DLX homeoproteins in enamel formation*. Journal of Cellular Physiology. 2008; 216:688-697.

Limkangwalmongkol P, Chiche GJ, Kee E, **Blatz MB**. *Comparison of marginal fit between all-porcelain margin VS alumina supported margin on procera alumina crowns*. Journal of Prosthodontic Dentistry. In press, 2008.

Li Y, Suggs C, Wright JT, Yuan ZA, Aragon M, Fong H, Simmons D, Daly B, **Golub EE**, Harrison G, Kulkarni AB, **Gibson CW**. 2008. *Partial rescue of the amelogenin null dental enamel phenotype*. Journal of Biological Chemistry. 283:15056-15062.

Millay DP, Sargent MA, Osinska H, Baines CP, **Barton ER**, Vuagniaux G, Sweeney HL, Robbins J, Molkentin JD. *Genetic and pharmacologic inhibition of mitochondrial-dependent necrosis attenuates muscular dystrophy*. Nature Medicine. 2008; 14(4):442-7.

Moore PA, **Hersh EV**, Papas AS, Goodson JM, Yagiela JA, Rutherford B, Rogy S, Navalta L. *Pharmacokinetics of lidocaine with epinephrine following local anesthesia reversal with phenolamine mesylate*. Anesthesia Progress. 2008; 55:40-48.

Preshaw PM, Novak MJ, Mellonig J, Magnusson I, **Polson AM**, Giannobile WV, Rowland R W, Thomas J, Walker C, Dawson DR, **Sharkey D**, Bradshaw MH. *Modified-release subantimicrobial dose doxycycline enhances scaling and root planing in subjects with periodontal disease*. Journal of Periodontology. 2008; 79:440-452, 2008.

Sarin J, Balasubramaniam R, Corcoran A, **Laudenbach JM**, **Stoopler ET**. *Reducing the risk of aspiration pneumonia among elderly patients in long-term care facilities through oral health interventions*. Journal of the American Medical Directors Association. 2008; 9:128-135.

Sarin J, DeRossi SS, **Akintoye SO**. *Updates on bisphosphonates and potential pathobiology of bisphosphonate-induced jaw osteonecrosis*. Oral Diseases. 2008 April; 14(3):277-85.

Stefanik D, Sarin J, Lam T, **Levin L**, **Leboy PS**, **Akintoye SO**. *Disparate osteogenic response of mandible and iliac crest bone marrow stromal cells to pamidronate*. Oral Diseases. 2008 July; 14(5):465-471.

**Stoopler ET**, **Alawi F**. *Clinicopathologic challenge. A solitary submucosal mass of the oral cavity*. International Journal of Dermatology. 2008; 47: 329-331.

Turner LN, Balasubramaniam R, **Hersh EV**, **Stoopler ET**. *Drug therapy in Alzheimer's Disease: An update for the oral healthcare provider*. Oral Surgery, Oral Medicine, Oral Pathology, Oral Radiology, and Endodontics. In press.

Wang CY, Huang Y, Chao EC, **Jeffcoat MK**. *Expected estimating equations for missing data, measurement error, and misclassification, with application to longitudinal nonignorable missing data*. Biometrics. 2008 March; 64(1):85-95.

Wright JT, Hart TC, Hart PS, Simmons D, Suggs C, Daley B, Simmer J, Hu J, Bartlett JD, Li Y, Yuan ZA, Seow WK, **Gibson CW**. *Human and mouse enamel phenotypes resulting from mutation or altered expression of AMEL, ENAM, MMP20 and KLK4*. Cells Tissues Organs. In press.

Xu RH, Cohen M, Tang Y, Lazear E, Whitbeck JC, **Eisenberg RJ**, **Cohen GH**, Sigal LJ. *The orthopoxvirus type I IFN binding protein is essential for virulence and an effective target for vaccination*. Journal of Experimental Medicine. 2008; 205:981-992.

## Grants

The following grants were awarded from 1/1/2008–8/1/2008.

### Department of Anatomy and Cell Biology

#### Enamel Mineral Formation During Murine Odontogenesis

4/1/2008–1/31/2013  
Funding Source: National Institutes of Health  
Principal Investigator: Dr. Carolyn W. Gibson, Professor of Anatomy and Cell Biology

#### Kids Seek Cure for Kids

4/1/2008–3/31/2009  
Funding Source: Children's Hospital of Los Angeles  
Principal Investigator: Dr. Elisabeth R. Barton, Assistant Professor of Anatomy & Cell Biology

### Department of Pathology

#### Role for DKC1 in Cell Proliferation and Transformation

4/1/2008–3/31/2010  
Funding Source: National Institute of Dental and Craniofacial Research/NIH/DHHS  
Principal Investigator: Dr. Faizan Alawi, Assistant Professor of Pathology

### Department of Periodontics

#### Building Clinical Research Capacity

6/5/2008–6/30/2009  
Funding Source: Proctor & Gamble Company  
Principal Investigator: Dr. Marjorie K. Jeffcoat, Professor of Periodontics

### Department of Preventive and Restorative Sciences

#### Polymerization Shrinkage and Degree of Conversion of Composite Core Materials at Different Curving Intervals

6/2/2008–6/2/2009  
Funding Source: Premier Dental Company  
Principal Investigator: Alan M. Atlas, Clinical Assistant Professor of Restorative Dentistry

#### Refining a Community-Based Oral Health Prevention Intervention for Vulnerable Older African Americans

7/1/2008–6/30/2009  
Funding Source: Penn MARCH (Minority Aging Research for Community Health) Center  
Principal Investigator: Dr. Yolanda Ann Slaughter, Assistant Professor of Community Oral Health



# Philanthropy

HONOR ROLL, JULY 2007–JUNE 2008

**P**enn Dental Medicine is proud to recognize those generous individuals and organizations that have chosen to support the School's longstanding tradition of excellence. Our mission statement lays out our mandate — Penn Dental Medicine will advance oral health throughout the world by fostering leaders in research, education, and dental care. The School will provide an atmosphere in which dentistry is continuously improved through innovation, research, and access to care.

This call to leadership cannot be realized without significant philanthropic support. Donors help us to meet this call through their support of our most important programs. For example:

- The School continues the ambitious renovation of its clinics to better serve our students and patients. With new orthodontic and periodontic clinics completed, the next projects will be the renovation — indeed transformation — of the Main Clinic and the Endodontic Clinic.
- Funding for endowed faculty positions attracts the best and brightest clinicians and investigators to careers in academic dental medicine. Recruiting and supporting young faculty strengthens our educational programs and addresses the critical nationwide shortage of dental faculty.
- While the cost of dental education is challenging, the School has redoubled its commitment to providing financial assistance to our students. Last year, the Dental School provided \$3.5 million in student aid, thanks in part to alumni support for this vital need.
- The School continues to strengthen its global leadership in dental education and research. With 51 active research programs and numerous international exchange partnerships, the Penn Dental Medicine "brand" is recognized worldwide for the quality of its graduates and its tradition of pioneering research.

In October 2007, Penn Dental Medicine publicly announced the most ambitious capital campaign in its history. The "Leading the Profession" campaign intends to raise \$36 million for the initiatives outlined above. Led by Co-Chairs Dr. Lawrence Kessler, D'70 and Dr. Martin Levin, D'72, GD'74, the campaign has already realized over \$18 million in gifts and pledges. Every single donor listed in this report has helped to make this extraordinary achievement possible. Unrestricted support to annual giving — over \$500,000 this year — is a vital resource in accomplishing all of our goals.

In the pages that follow are the names of those individuals and organizations that have made monetary gifts to Penn Dental Medicine between July 1, 2007 and June 30, 2008. The School extends its deepest thanks to each of you for investing in Penn Dental Medicine today and in the future of our profession.

## Annual Giving Donors

This list includes all donors who made unrestricted gifts totaling \$250 or more to Penn Dental Medicine's annual giving funds in 2007–2008. By providing essential support to help Penn Dental Medicine meet its annual needs, the generosity of our donors is critical to the School's success in adapting its programs to stay at the forefront of dental medicine. Their commitment sustains Penn's preeminence in dental medicine, and advances the School's mission of preparing its graduates to become dentistry's leading clinicians, educators, and researchers.

### BENJAMIN FRANKLIN SOCIETY

*The Benjamin Franklin Society is the University of Pennsylvania's leadership unrestricted annual giving group. Members of the Benjamin Franklin Society form the most critical base of support for the University and serve as a powerful motivator for garnering greater participation. Through their vision and generosity, members of the Benjamin Franklin Society are an inspiration and example to others.*

#### Founder (\$10,000–\$24,999)

David S. Crimmins, D'74  
Pasquale J. Malpeso, D'79, GD'83  
Steven Alan Schwartz, D'76  
Robert E. Weiner, C'72, D'79

#### Fellow (\$5,000–\$9,999)

Laurence B. Brody, C'52, D'56  
Loretta T. Brody  
D. Walter Cohen, C'47, D'50  
Kenneth C. Fordham, Jr., GED'81, D'82  
Ronald J. Gutman, D'74  
Dr. Ellen Heuman  
Mrs. Hope Rothenberg Kessler, CW'67, ASC'69  
Lawrence Kessler, C'66, D'70  
Edwin S. Sved, D'51  
Rev. James A. Tsigounis, D'58  
Cheryl Lang Ullman, D'78

#### Associate (\$2,500–\$4,999)

Edwin C. Bartine, DO, D'76  
Frank R. Besson, Jr., D'94, GD'96  
Geraldine L. Besson, D'94, GD'95  
Tanja J. de Marsche, DH'75, GD'81  
Michael J. Feldman, D'89

Carolyn D. Forwood  
Francis G. Forwood, D'77, GD'79  
Janice M. Gian-Grasso, GNU'77  
Joseph E. Gian-Grasso, C'67, D'71  
W. Darby Glenn III, MD, M'56  
Frances B. Glenn, D'56  
Dr. Joseph L. Herman  
James D. Hudson, PC.  
Bentha Johnson  
Edward P. Johnson, D'72  
Anita Nayar Joy, D'81  
Christopher H. Joy, D'80  
Bradford S. Jungels, GD'91  
Fred B. Kastenbaum, D'77  
Allan D. Klenetsky, D'74  
Gerald H. Kreinces, D'68  
Keith D. Libou, D'84  
P. L. Rosenbaum-Libou, SW'83  
Susan S. Ling, D'90  
Robert N. Lipner, D'77  
Robert Litowitz, D'43  
Donald F. Major, MAGD, D'70  
Alan M. Meltzer, D'72  
Estate of Harriet Worrall Mershon  
Randolph L. Mitchell, D'81  
Jody Paolino  
Robert Martin Paolino, D'83, GD'87  
Michael A. Petrillo, D'73  
Mr. Bernard Poussot  
William W. Roberts, III, C'72, D'77, GD'78  
Irving M. Rothstein, C'38, D'41  
Lorain R. Rothstein  
Tara Sexton, D'88  
David Tai-Man Shen, D'79, GD'81  
Shirley Ruth Shils, CGS'84, CGS'90, G'93  
David Richard Silver, D'85, GD'86, GD'88  
Eric H. Spellman, D'76  
David S. Tarica, D'83  
P. Deborah Weisfuse, D'77  
Margaret S. Williams, CW'62, GED'85  
Robert H. Williams, CHE'59, D'63

## RED AND BLUE SOCIETY

*Named after the University of Pennsylvania's colors, the Red and Blue Society honors those donors who make significant gifts in support of the University.*

### Member (\$1,000–\$2,499)

Clement C. Alpert, C'32, D'34  
Sandra K. Alpert  
Ann Kearney Astolfi, D'92  
Robert M. Atebara, D'73  
Robert Warren Baker, Sr., D'52  
Natalie Baker  
John David Beckwith, D'87  
Frank R. Besson, D'65, GD'68  
Daniel A. Bomberger, D'55  
Gayle M. Bomberger  
Paul J. Carpinello, D'86  
Laurence G. Chacker, D'85  
Chingshun Jason Chang, D'95  
Allen Y. H. Cheng, D'78  
James E. Clayton, Jr., D'82  
Gail Spiegel Cohen, C'76, D'80  
Leonard A. Cole, D'57  
Michael G. Cook, C'72, D'76  
Stephen A. Cooper, D'71  
Marc Anthony Cozzarin, D'87  
Charles R. Dagati, D'66  
Barrey Danvers, V.M.D., V'80  
Lynda Phillips Danvers, DH'78  
Joel S. Delfiner, MD, M'79  
Mark B. Desrosiers, D'84  
Steven R. Diak, D'74  
Dr. Breese M. Dickinson, M'34  
Dr. Matthew J. Doyle  
Paul R. Feldman, D'83  
Anita Garazi  
Isaac Garazi, D'81, GD'84  
Madeline S. Ginzburg, D'79, GD'80  
Criswell Cohagan Gonzalez  
Myron S. Graff, D'72  
Sidney Gutsin, D'68  
Aaron M. Hader, D'58  
Robin David Harshaw, D'71  
Dr. & Mrs. Richard Hayashi  
Rowland A. Hutchinson, D'58  
William E. Jacoby, Jr., D'64  
Michael M. Kay, D'63  
Steven J. Kerpen, D'81  
Dorothy A. Kinney, D'52  
Patricia A. Kissel, D'78, GD'83  
David Mark Klugman, D'84  
Judith C. Koss, C'81  
Ilze Lakstigala, D'54  
Kenneth W. Laudenbach, GD'73  
Joseph Lipa, Jr., D'62  
Marc F. Lipkin, D'80, GD'81  
Patricia A. Ludwig, CW'74, D'81  
John R. Mann, Jr., D'55  
George H. Master, D'70  
Ellice McDonald, Jr., W'36  
Rosa Hayward McDonald  
Andrew S. Melinger, C'74, D'78  
Philip L. Michaelson, D'99  
Ronald M. Nakamura, C'61, D'65  
Jay M. Neuschatz, D'74  
Laurence D. Popowich, GD'81  
Lewis E. Proffitt, D'73, WG'80  
Ronald Michael Pross, D'74  
Dr. Susan Hymes Pross, GR'75  
Robert N. Reynolds, D'53  
Vincent Reynolds

Linda E. Rigali, D'83  
Jeffrey Rubin, D'82  
Walter F. Russo, D'83  
Gail Ellen Schupak, D'83  
Bertram H. Serota, D'60  
Phyllis Berman Serota, CW'58  
William C. Stavrides, D'53  
John G. Steciw, GD'77  
Gary P. Swistak, GD'83  
Paul W. Teplitsky, D'80  
Paul Edward Tomasovic, D'88  
Morey Udine  
Catherine Serena Uybeckuat, D'97  
Arnold S. Weisgold, GD'65  
Myra Chernoff Weisgold, CW'61  
Patti Lee Werther, D'78, GED'78, GD'81  
Michael D. Yasner, C'79, D'83, GD'84, GD'86  
Valerie Eisenberg Yasner, C'79, D'83, GD'86  
Jonathan Zamzok, D'80

## THOMAS EVANS SOCIETY

*Named after Thomas Evans, who left his estate to Penn Dental Medicine, the Thomas Evans Society honors those donors who, like Evans, want to support a dental school that is "second to none".*

### Associate (\$500–\$999)

Edward B. Allen, D'47  
Albert J. Anderson, Jr., C'52, D'55  
Deborah Rosenblum Arlick, C'84, GED'84  
Jay Lee Arlick, D'85  
George S. Atebara, D'55  
Joseph C. Au, D'65  
Peter R. Auster, D'80  
Gail Downs Baer, DH'65  
Dr. Robert L. Baer, CHE'65, GEE'67, GR'71  
Jeffrey A. Bassin, D'70  
William A. Billingham, D'54  
William J. Bisignano, Jr., D'70  
Robert B. Bowden, D'71  
Ralph J. Bozza, D'79  
Dennis M. Byrne, D'76  
Corinne "Corky" L. Cacas  
Lawrence B. Caplin, D'90  
John Michael Capogna, GD'88  
Andrew B. Casabianca, MD, D'79  
Philip Po Cheung Chan, D'55  
Scott J. Chanin, D'83  
Christina Young Chao, MD, CW'74  
Jireh I. Chao, ME'74, D'79  
Yung S. Chung, D'83  
Robert J. Collins, D'71  
Richard G. Commons, D'53  
John M. Cross, D'82  
Katherine Cutchins-Billingham, GED'54  
Francine Trzeciak Cwyk, D'82, GD'84  
William David Dailey, D'66  
Ellen B. Daniels  
William K. Deal, D'65

Dianne Woods Defrino, CW'58  
Francis A. Defrino, D'58  
Robert Joseph Demarco, D'87  
Francis J. Dermody, D'67  
R. Allen D'Innocenzo, D'88, GD'94  
Charles R. Dufort, D'70  
Hillel D. Ephros, MD, D'80  
Mark W. Evans, D'84  
Ronald Feldberg, D'75  
Arthur Fertman, D'60  
Robert A. Fischer, D'60  
John C. Ford, D'82  
John M. Fosnocht, D'58  
Gregg M. Garcia, D'79  
David G. Gifford, D'62  
Adam Marc Goodman, D'89  
Jaime Buttermann Goodman, C'86  
Stephen H. Grossman, D'79, GD'80  
Robert S. Hall, D'64  
William N. Hanafee, Jr.  
John L. Hayes, GD'86  
Sharon Kift Hayes, D'80  
Stanley C. Heifetz, D'78  
John P. Hellwege, C'56, D'59  
Thomas W. Herfort, D'79  
Lawrence T. Herman, D'72  
Jesse H. Hogg, Jr., D'53  
Michael L. Iczkovitz, GD'79  
Joseph A. Ilacqua, GD'85  
Robert P. Indyk, D'74, GD'83  
Naser Kamkar  
John J. Keating III, GD'81  
Joseph L. Keefer, D'84, GD'85  
David A. Kessler, C'96, D'00, RES'00, M'02, GD'05  
Theodore H. Kirrstetter, C'46, D'48  
Michael J. Kish, C'67, D'71  
Kenneth G. Koktish, D'77  
Walter K. Kulick, D'77  
Miles E. Kuttler, D'70  
David T. W. Lau, D'79  
Paul Y. Lee, GD'84  
Martin D. Levin, D'72, GD'74  
Susan Levin  
Deborah Pollock Levitt, CW'69  
Richard E. Levitt, C'68, D'72, GD'77  
Jeffrey I. Lipton, D'69  
Warner E. Lund, Jr., D'64  
Kenneth Adams MacAfee, D'83, GD'86  
Max A. Malkoff, D'66  
Beatrice Mann  
Vincent J. Mannino, C'69, D'73  
Bruce D. Manson, WG'87  
Robert B. Martin, D'72  
Jerald Samuel Matt, D'88  
Paul J. McKenna, Jr., D'79  
James M. Mcnerney, D'69  
Barry D. Meiselman, D'58  
Frederick Meiselman, D'64  
Toba R. Meiselman, CW'56  
Anita Marie Milici, D'90, GD'93, GD'93  
Frederick R. Molander, Jr., D'72  
Deborah Nash Molander, CW'71  
Robert S. Morgenstein, D'65  
Dr. Susan Morgenstein  
Joseph M. Nastro, Jr., D'58  
Dr. Fereshteh Nourafshar  
Mindy Ok, D'97  
Debra A. Oro, D'79  
Robert John Oro, D'79

Robert Frank Otto, D'88  
Joseph R. Pastorello, D'58  
Allen D. Pearlman, D'83  
James L. Pearlstein, D'78  
Douglas E. Peterson, PhD, D'72, GR'76  
Thomas Paul Petrick, Jr., D'87  
Richard L. Pickett, D'66  
Albert M. Price, D'70  
William E. Rasberry, D'51  
Joseph Stephen Rava, D'91  
Saundra B. Reilly, D'85  
Steven Jay Reubel, EE'75, D'80  
Cathy A. Reynolds, DH'73  
Richard D. Riddle, D'84  
Charles M. Riotto, D'80  
Dr. Marian G. Royer, D'80  
Donald J. Salomon, D'85  
Jacob A. Salzmann, C'59, D'63, GD'64  
Peter K. Schaeffer, D'56  
Drew F. Seibert, D'56, GD'58  
John W. Sheffield, Jr., GD'61  
Stephen A. Solomon, D'84  
Gerald W. Springstead, GD'67  
Robert J. Steinberg, C'43, D'44  
Shirley R. Steinberg  
Susan L. Stern, C'77, D'81  
Paul Michael Tedeschi, D'88  
Joel S. Teig, D'73  
Seniboye B. Tienabeso, G'80, D'84  
David Ulanet, D'63  
Terry D. Venturi, D'65  
Michelle Brettler Warren, DH'79  
John A. Weierbach II, D'81, GD'82  
Mark J. Weingarden, GD'81  
Michael A. Wernick, D'73  
William L. Wesner, D'54  
Peter C. Wright, D'74

**Member (\$250–\$499)**  
Nina V. Aks, D'01  
J. Craig Alexander, D'82  
Karl A. Arakelian, D'91  
Edward U. Austin, GD'51  
Alexandra A. Baker, D'77  
Bonnie Baldassano  
William Vincent Baldassano, D'87  
Sonia Barbosa-Ruiz, D'94  
Matthew Baron, D'99  
Joseph Bartoloni, D'80  
Cindy M. Behrens, D'84  
Robert J. Bernstein, D'83, GD'84  
Joseph S. Bienstock, D'52, GD'54  
Phyllis Bienstock  
Capt. Jay A. Black, D'80  
Sherrie Allemang Black, D'80  
David N. Bordonaro, D'83  
Margaret Bordonaro  
James V. Bordonaro, D'80  
Colum J. Boyland, D'53  
Deo Rhodes Boyland, D'55  
Charles M. Brenner, D'73  
Charles Bromberg, D'65  
Michael L. Brugg, D'69  
John W. Burk, D'74  
Jeffrey Chait, D'70, GD'72  
Benjamin Chan, GD'61  
Bharat Chauhan, D'93  
Lynda C. Chen, D'96  
Peter Chin, D'84  
Dennis N. Cohen, D'73  
Morton Cohen, D'48

Sara Corinne Cohen, D'95  
Philip A. Cooper, D'76  
Jack H. Corn, D'81, GD'82  
Barbara E. Cowen  
Stephen H. Cowen, WG'70  
David J. Crossley, D'63  
Heidi C. Crow, D'85  
Barbara Hecht Davis, MT'59  
Howard B. Davis, W'59  
Daniel P. Decesare, D'63  
Alvin F. DeSiena, D'70  
Gary A. Di Santo-Rose, D'79, GD'80  
Victor S. Dietz, D'69  
Mark J. Doherty, D'74  
Najibe Haddad Dow, D'93  
Lee B. Durst-Roisman, D'83  
Daniel C. Eckhard, D'80  
Enehizena N. Ehondor, D'05  
Ellen Eisenberg, D'74  
James R. Elder, D'69  
Leslie R. Elfenbein, GD'84  
Bruce M. Elliott, D'66  
Sheila Anne Elliott, NU'67  
Keith W. Eveland, D'70  
Joseph P. Falcetti, D'54  
Barbara Fine, ED'57, GED'59  
Gerald L. Fine, D'59  
Deborah L. Fishman-Kahn, D'87  
Peter R. Flynn, D'77  
Alan H. Frankel, C'67, D'70  
Peggy Frankel  
Frederic J. Freidus, D'68  
Gregory L. French, D'85  
Harold V. Garrity, Jr., D'49  
Louis T. George, D'01  
Joan Gerber  
Joseph I. Gerber, D'53  
Harold B. Ginsberg, D'56  
Martin J. Glassman, D'83  
Joseph Gorelick, D'52  
Dr. Betsy Harris Granite, GR'85  
James R. Granite, C'66, D'70, GD'73  
Daniel B. Green, D'60  
Steven E. Haas, D'83, GD'84  
Jeffrey H. Harnett, D'66  
David J. Hauss, D'81  
Alan R. Hecht, D'94  
Marc W. Heft, EE'70, D'74  
Bonnie Berman Henick, D'80  
Kathleen E. Herb, C'88, D'92  
Frederick D. Hicks, D'70  
Clare Hull Huleen, DH'65  
John A. Huleen, D'66  
Lori Debra Hurst, D'89, GD'92  
Ronald T. Hwang, D'81  
Robert J. Jarosz, D'58  
Charles W. Jensen, Jr., C'56, D'59  
David M. Jerud, D'75  
Lorraine R. Jerud, D'77  
Mr. & Mrs. Jin Jin  
Peter F. Johnson, D'71  
Tyler H. Jolley, GD'06  
Ching Yue Elizabeth Kao, D'83  
Arnold Katz, C'55, D'58  
Patrick M. Keeley, D'71  
Lt. Col. Thomas M. Kiefer, D'83  
Jeffrey C. Kleiman, EE'75, D'79  
Jerome A. Kleponis, D'81  
J. David Kohn, GD'58  
Jerome M. Laffer, D'67  
Nan A. Lamm, GED'71  
Peter Steven Lamm, D'71  
Barry W. Langsam, D'62

Dr. and Mrs. Suk Wan Lee  
William F. Lenker, D'60  
Stanley M. Levenson, C'78, D'85  
Brett R. Levin, D'00  
Joanna Z. Levin, D'96, GD'97, GD'99  
Ramona M. L'Heureux, D'82  
Charles R. Lipton, D'69  
Jeffrey L. Lite, D'75  
Donald G. Lovejoy, D'59  
Lawrence W. Loveland, D'55  
Vernon Loveless, D'73  
Pauline Lowe-Ching  
Stanley Lowe-Ching  
Mr. & Mrs. Bharat Maniar  
Laurene Alyse Marks-Wolf, D'94  
Robert L. Massucco, D'63  
Walter E. Maust, Jr., D'67  
Brian P. McAndrew, MD, D'93  
Richard L. McClelland, D'54  
Edwin R. McDevitt, Jr., C'50, D'53  
Albert Melli, C'54, D'58  
Wei-Hsin Men, D'94  
Michael W. Migdal, D'84  
Charles B. Millstein, GD'67  
Simon Milman, D'81  
Shirley K. Molina, D'02  
Randolph C. Myerson, D'73, GD'78  
Joel I. Nathanson, D'82  
Peter W. Ngan, GD'84  
Franklin D. Niver, D'66  
Scott A. Odell, D'82  
Gary A. Orbach, D'86  
J. Paul Owens, D'54  
Morton B. Parmet, C'37, D'41  
Larry Pepper, D'78  
Ralph S. Pfeifer, D'73  
Nicholas G. Pituras, D'59  
Thomas G. Planzos, D'86  
Sidney G. Rachlin, D'41  
Monroe H. Rackow, D'66  
Peter J. Rattigan, D'76  
Francine B. Rebhun, D'82  
Joanne S. Reiffe-Fishbane, D'79  
Richard A. Rifkin, D'85  
Louis A. Rigali, D'57  
Alan B. Rosenthal, PC, D'79  
David M. Roshkind, D'76, WG'76  
Lawrence N. Rouff, D'63, GD'66  
Richard W. Ruby, D'74  
Ronald V. Runyon  
Anthony J. Russo, D'52  
Peter C. Ryan, D'74  
Nicholas D. Saccone, D'44  
Louis Sandor, Jr., C'57, D'61  
James N. Sarantos, D'59  
Robert Gerald Savarese, D'82  
Carl W. Schamu, D'68  
Mark Alan Schaum, PA  
Thomas R. Schneid, D'79  
Hilton Zvi Segal, GD'88, D'91  
Matthew M. Segal, D'84  
Gary W. Seldomridge, D'81  
Behnaz Shakoobi, D'00  
Michael S. Shreck, D'84  
Donald H. Silverman, D'73, WG'74  
Albert J. Simkins, Jr., D'58  
James D. Smallwood, D'64  
Vincent J. Smith, D'54

W. Ellis Smith, D'70  
Pamela & Michael Smith  
Family Foundation  
Alden L. Snyder, D'55  
Elizabeth Foster Snyder, DH'48  
Carolee S. Solof, D'78  
Dean Ford Sophocles, D'87  
W. Roger Sorg, D'60  
Robert M. Sorin, D'74  
Alan M. Stoneback, D'57  
Peter H. Strife, D'59  
George Suranyi, D'04  
Leonard C. Taddei, Jr., D'79  
Charles W. Tager, D'58  
Robert C. Todd III, D'80  
Donald G. Tomlin, D'56, GD'59  
Mark Bryan Tornatore, D'86  
Carmen A. Troisi, Jr., D'59, GD'61  
Mary Gower Troisi, DH'58  
Dr. Idit Trope, GR'85  
Martin Trope, GD'82, D'83  
Richard P. Udall, D'54  
Anthony A. Vito, D'53, GD'66  
Robert L. Wagner, D'76  
Mrs. Barbara Dougherty Wall, DH'59  
C. Robert Waters, Jr., D'68  
Morton S. Weinstein, C'53, D'56  
Arthur Z. Weiss, D'75  
Robert A. Werner, D'53  
Andrew T. Wilson, D'98  
Stephen Wotman, D'55  
Eric Wu, D'00  
John A. Zalatan, D'73

## Capital and Endowment Giving Donors

*This list includes all donors who made restricted gifts to Penn Dental Medicine's capital and endowment funds in 2007–2008. Their gifts in support of enhancing and developing new programs, providing scholarship aid, renovating facilities, and upgrading equipment and technology are an enduring legacy and provide for the future of Penn Dental Medicine.*

**Morton Amsterdam Award Fund**  
M. Jeffrey Morton, D'76

**Astra Tech Clinical Implant Fellowship**  
Astra Tech Inc

**Morris Bradin Memorial Library Fund**  
Bernice Bradin  
Vera Bradin  
Hoffmann-La Roche Inc.  
Susan B. West

**Lester Burket Fund**  
Matthew J. Cohen, C'54, D'57

**Cheung Family World Scholar Fund**  
William W. M. Cheung, D'81, GD'82  
Dr. Marjorie K. Jeffcoat, HOM'04  
Robert L. Jeffcoat

**Class of 1971 Endowed Scholarship Fund**  
Frank Adsheed, D'71  
Brian C. Dubin, D'71, GD'73  
Kenneth A. Ingber, D'71  
Mark A. Judy, D'71  
Thomas L. Snyder, D'71, WG'74

**Class of 1972 Main Clinic Renovation**  
David M. Barnett, D'72  
EndoNet Consulting, LLC  
Paul Gingras, D'72  
Joseph R. Greenberg, D'72, GD'76  
Jung San Carolyn Huang  
Susan M. Lee, D'72  
Martin D. Levin, D'72, GD'74  
Richard P. Simitis, D'72  
Barry D. Wagenberg, D'72

**Class of 1982 Endowed Scholarship Fund**  
Corinne "Corky" L. Cacas  
James H. Doundoulakis, D'82, GED'82  
Gary S. Dworkin, D'82, GD'83  
Jeffrey A. Goodman, D'82, GED'82  
William N. Hanafee, Jr.  
Jeffrey Rubin, D'82

**Dentsply Periodontic Implant Fellowship Fund**  
Dentsply International Inc.

**Endodontic Clinic Renovations Fund**  
David W. Belardi, GD'73  
Michael Do, GD'03  
Denny Y. Fang, GD'01  
Anthony R. Harlacher, D'91, GD'04  
Dr. Ho K. Hwang  
Sung-Kyo Kim  
Harriet J. Koren, Esquire, GL'83  
Larry Z. Koren, GD'83  
Brian Lee, D'00, GD'04  
WooCheol Lee, GD'01, GD'01  
Jeffrey A. Levin, D'91, GD'99  
Jung Lim, GD'04  
Timothy C. Lin, D'96, GD'99  
Donald Tsung-I Liu, D'96, GD'99  
Erick R. Menegazzo, GD'04  
Spencer-Carl Saint-Cyr, D'97

**Thomas W. Evans Fund**  
Mrs. Evelyn Hymowitz Brown, ED'54

**Lenore and George (D'49) Feldman Endowed Scholarship Fund**  
Jennifer L. Conry  
Neil W. Danzger, EAS'85, W'85  
Sharon Feldman Danzger, W'87  
Mr. and Mrs. David Feldman

**Fordham Family Scholarship Fund**  
Kenneth C. Fordham, Jr., GED'81, D'82  
Suzanne C. Fordham

**Victor Frank Memorial Fund**  
Victor H. Frank, Jr.  
Frank Family Fund

**Gift Annuity Pool of Dental Medicine**  
Janice M. Gian-Grasso, GNU'77  
Joseph E. Gian-Grasso, C'67, D'71

**Goldin Seminar Fund**  
Harriet Krangel Goldin, CW'62  
Marshall J. Goldin, C'60, D'64

**Louis I. Grossman (D'23) Professorship in Endodontics Fund**  
David P. Rossiter III, D'70, GD'74, GR'76

**International Friends of SDM Scholarship Fund**  
Bucknell University

**Laboratory Technician Fund**  
Etikon Usa, Inc.  
Institut Straumann AG  
**Limoli Scholarship Award**  
Dr. Michelle Limoli

**Main Clinic Renovations Fund**  
Richard Copell, D'80  
Richard E. Derrick, D'65  
Eastern Dentists Insurance Company  
David Brian Ettinger, M.D., D'87, GD'93  
Fahmida Hussain, D'98, GD'99, WMP'02, GR'05, GRD'09  
Dr. Marjorie K. Jeffcoat, HOM'04  
Thomas C. Jordan  
Estate of Lee A. Krimmer, D'49, GM'53  
Jacqueline S. Leder-Ettinger, GNU'87  
Mr. and Mrs. Jeffrey A. Liberman  
Estate of Bruce W. Manning, D'64  
Glenn R. Oxner  
Henry Schein Inc.

**Measey Foundation Dental Scholarship Fund**  
Benjamin & Mary Siddons  
Measey Foundation

**Orthodontic Clinic Renovations Fund**  
Normand S. Boucher, GD'82  
Robert B. Chastant, GD'78  
Catherine F. Fedor  
Jeffrey A. Fedor  
Mark Raymond Greco, D'84, GD'85, GD'87  
Douglas Scott Harte, D'88, GD'91  
Thomas A. Herberger, GD'87  
Russell K. Street

**Orthodontic Clinic Technology Fund**  
Alta View Orthodontics  
Mitchell J. Burgin, GD'52  
Joyce A. Perih, GD'89  
Dr. John K. Pershing, Jr.  
Tony L. Skanchy, GD'91  
Betty S. Vodzak  
Louis S. Vodzak, GD'67  
Warren D. Woods, GD'82  
Donald C. Yu, D'79

**Orthodontic Department RLV Silver Jubilee Fund**  
Robert B. Amley, GD'72  
James G. Barrer, D'80, GD'84  
Edward A. Barrett  
Frank R. Batastini, GD'98  
Paul J. Batastini, GD'72  
Sandra Strohecker Beckett, GD'99  
Frank R. Besson, D'65, GD'68  
Brendan J. Boylan, D'55, GD'57  
Col. Eric J. Brendlinger, GD'98  
Matthew J. Busch, GD'99  
John Michael Capogna, GD'88  
Daniel P. Casullo, GD'75  
Guy Coby, GD'87, GD'90  
Patrick T. Cuozzo, GD'97  
Joel Elliot Elfman, GD'84  
Stephen M. Fisher, D'66, GD'67  
Carolyn D. Forwood  
Francis G. Forwood, D'77, GD'79  
Cathleen M. George, D'98, GD'00  
Mark Raymond Greco, D'84, GD'85, GD'87  
Douglas Scott Harte, D'88, GD'91  
Lawrence S. Harte, D'57  
John L. Hayes, GD'86  
Sharon Kift Hayes, D'80  
David C. Hufham, GD'01  
Donald M. Humen, D'68, GD'72  
Kazumi Ikeda, GD'81  
Ching Yue Elizabeth Kao, D'83  
John I. Kershman, GD'85  
Robert W. Kidd III, D'65  
Jung Kook Kim, MS, PhD, GD'94, GD'94  
Dr. Harvey L. Levitt  
Kevin P. Lucas, GD'89  
Masel Industries Inc.  
Julian Mayro, MD, C'54  
Rosario F. Mayro, GD'76  
John F. Moffett, GD'92  
Vincent Mongioli, D'99, GD'01  
Vanessa A. Morenzi, D'83, GD'84, GD'89  
David R. Musich  
Peter W. Ngan, GD'84  
J. Henry O'Hern, Jr., D'53, GD'55  
Maureen O'Hern, HUP'54  
Orthodontics For All Ages  
Joyce A. Perih, GD'89  
Peter I. Pfaffenbach, GD'72  
Alena E. Raidl, D'84  
Peter Rouff, GD'07  
Mark A. Ruggerio, D'82, GD'83, GD'85  
Mandy-Pen Shui, D'91, GD'91, GD'93



Tony L. Skanchy, GD'91  
Steven J. Solow, C'73, D'77,  
GD'80  
Susan H. Solow, CGS'77  
John G. Steciw, GD'77  
Strohecker Orthodontic Assoc.  
Gary P. Swistak, GD'83  
Mark A. Taddonio, GD'73  
Janine R. Trindade, D'02,  
GD'07  
Wallace W. Wong, GD'98  
Andrew P. Woo, GD'00  
Warren D. Woods, GD'82  
Woods Orthodontics, P.C.  
Sima S. Yakoby, D'02, GD'07

**Pediatric Dentistry  
Department Fund**  
Pennsylvania Dental  
Foundation

**Stanley G. Pensak Scholarship  
Fund**  
Estate of Stanley G. Pensak,  
C'39, D'41

**Periodontic Clinic  
Renovations**  
Dental Periodontic Clinic  
3i Implant Innovations, Inc.  
Astra Tech Inc.  
Nobel Biocare  
Irving M. Rothstein, C'38, D'41  
Lorain R. Rothstein

**Periodontics Implant  
Fellowship**  
American Academy of  
Periodontology Foundation

**Post Gateway Building  
Improvement Fund**  
Therese DiFlorio Brennan,  
D'94, M'98, GD'01  
Howard E. Goldstein, D'90  
Infinite Endodontics  
Racquel M. Johnson, D'97  
Anna Kornbrot, D'79, GD'82  
Lawrence Mark Levin, MD,  
D'87, GD'92  
Spencer-Carl Saint-Cyr, D'97  
David S. Tarica, D'83

**Drs. Samuel R. (GD'48) and  
Louis E. (D'75, GD'77)  
Rossman Endowed  
Scholarship Fund**  
Corinne "Corky" L. Cacas  
Dr. and Mrs. E. J. Dellheim  
Dr. Alan Feldman  
William N. Hanafee, Jr.  
Dr. and Mrs. G. A. Markowitz  
Louis E. Rossman, D'75, GD'77  
Dr. Barbara J. Steinberg  
Arnold S. Weisgold, GD'65  
Myra Chernoff Weisgold,  
CW'61

**Straumann Term  
Professorship in Periodontics**  
Straumann U S A

## Alumni Donors by Class Year

*This list includes all Dental,  
Graduate Dental, and Dental  
Hygiene alumni who made a  
gift to any Penn Dental  
Medicine fund in 2007–2008.  
If a graduate has multiple  
degrees from Penn Dental  
Medicine, they are listed  
under the class year of their  
first degree.*

**Class of 1934**  
Clement C. Alpert  
Mrs. Malba Lilly Oakley

**Class of 1938—70th Reunion**  
Hyman Katz

**Class of 1939**  
Alfonso J. Anastasio  
Irving M. Richter

**Class of 1940**  
Arnold J. Levine  
Eli P. Zebooker

**Class of 1941**  
Ivan F. Barnes  
David J. Kennedy  
Morton B. Parmet  
Estate of Stanley G. Pensak  
Sidney G. Rachlin  
Irving M. Rothstein

**Class of 1942**  
Francis Pavlovsky

**Class of 1943—65th Reunion**  
Robert E. Brenner  
Edward Z. Filler  
Robert Litowitz  
Robert K. Sassaman

**Class of 1944**  
Frank R. Berson  
Valentine P. Bloch  
Neal R. Fee  
James Alfred Hallman  
Morton E. Melman  
Nicholas D. Saccone  
Robert J. Steinberg  
Albert M. Weil

**Class of 1945**  
Doris Krewson Brannigan  
Emmett R. Costich  
Burton E. Kane  
Robert R. Lacey, Jr.

**Class of 1946**  
Nancy Reidel Downs  
Philip H. Dunham  
Peter A. Frank, Jr.  
Melvin B. Fuerst  
Joseph H. Goldberg  
Betty Hogan Holderbaum  
Mary Dahill Mcadam  
Eleanor L. Nystrom  
Frances Skorol Zikaras

**Class of 1947**  
Edward B. Allen  
Irving J. Alper  
Henry Gaines  
Louis H. Guernsey  
Margery M. Hall Johnston  
J. Raymond Moore, Jr.

**Class of 1948—60th Reunion**  
Morton Cohen  
Patricia Dunn Cutshall  
Joanne Axtell Holz  
Theodore H. KIRSTETTER  
Howard S. Kramer, Jr.  
Ruth Morrison Mitchell  
George V. Newman  
Peter S. Pappas  
Harry R. Philippi  
Lee F. Reilly, Jr.  
Mary Ann Wilson Schilgen  
Lawrence I. Shepard  
Elizabeth Foster Snyder

**Class of 1949**  
Harold V. Garrity, Jr.  
Estate of Lee A. Krimmer  
Mary G. Maddox Silverstein  
R. Leonard Weinberg

**Class of 1950**  
Theodore Adler  
D. Walter Cohen  
Ralph D. Fleming  
Henry A. Geidel, Jr.  
Harold Krivins  
Paul J. McKenna  
Edwin M. Reiersen, Jr.  
S. Arthur Rybeck

**Class of 1951**  
Edward U. Austin  
Dorothy R. Cellini  
Jo-Ann Flynn Chaconas  
Edwin Cowen  
Rear Admiral Paul E. Farrell  
William W. Flanagan, Jr.  
James E. Lindemuth  
Frank R. Lowrey  
Bruce L. Malcolm  
Kenneth W. Miller  
Anne R. Morrey  
William E. Rasberry  
John H. Rey  
Dillman C. Sallada, Jr.  
Edgar J. Schmidt  
Barbara M. Stolzenberg  
Edwin S. Sved  
Joyce Barnett Unger

**Class of 1952**  
Robert Warren Baker, Sr.  
Joseph S. Bienstock  
Glenn F. Bitler  
Sally Ritchie Brannan  
Mitchell J. Burgin  
Thomas B. Cameron, Jr.  
Robert H. Conte  
Joseph Gorelick  
Roger P. Kellogg  
Dorothy A. Kinney  
Kenneth E. Penny  
Reid H. Porter  
Anthony J. Russo  
John B. Sowter  
John A. Spaulding

**Class of 1953—55th Reunion**  
Alvin Bodenstein  
Colum J. Boyland  
C. Peter Chaconas  
Richard G. Commons  
Donald A. Cooper  
Douglas M. Dunbar  
Glen E. Foster, Jr.  
Joseph I. Gerber  
Ina Canady Gross  
Jesse H. Hogg, Jr.  
Ann Sproule Hunnicutt  
George S. Johnson  
Bernard P. Lewis  
Alex R. Matera  
Joan K. Mathews Wilkow  
Edwin R. McDevitt, Jr.  
J. Henry O'Hern, Jr.  
Helen Lucas Price  
Robert N. Reynolds  
W. Eugene Ryon 3rd  
Alvin H. Simonson  
William C. Stavrides  
Thomas O. Sweet  
Arthur H. Tomlinson  
Coleman R. Tuckson  
Anthony A. Vito  
Robert A. Werner

**Class of 1954**  
William A. Billingham  
Naomi Goldman Childers  
Joseph B. Cohen  
Thomas T. Doran  
Joseph P. Falcetti  
Richard D. Field  
Alan G. Harquail, Jr.  
Ilze Lakstigala  
Richard L. McClelland  
Diane D. McKenzie  
Thomas A. McManus, Jr.  
J. Paul Ovens  
Vincent J. Smith  
Claude W. Springer  
Richard P. Udall  
Robert V. Walker  
William L. Wesner

**Class of 1955**  
Albert J. Anderson, Jr.  
Adam F. Andrews  
George S. Atebara  
Ralph R. Biondino  
David J. Bleiberg  
Daniel A. Bomberger  
Brendan J. Boylan  
Deo Rhodes Boyland  
Philip Po Cheung Chan  
Valerie V. Davidson  
Donald B. Dolan  
Alan H. Gelbert  
Robert A. Greene, Jr.  
Earl H. Gross  
Arthur Edward Halprin  
John L. Kotchick, Jr.  
Hillard I. Lerner MSD  
Richard Levine  
C. Wendell Lofland  
Lawrence W. Loveland  
John R. Mann, Jr.  
Richard H. Perry  
Arthur Z. Ponce  
Arthur L. Ruderman  
Alden L. Snyder  
Robert E. Timby  
Stephen Wotman  
John T. Ziegler

**Class of 1956**  
Charles V. Adrian  
Anthony J. Bernardo  
Laurence B. Brody  
Edmund B. Coughlin  
David C. Dickinson  
Alvin Eller  
Harold B. Ginsberg  
Frances B. Glenn  
Edward G. Holteen  
Marjorie Baskin Kurcias  
Bernard M. Mechlowitz  
Paul G. Mosch  
Kenneth W. Purdy, Jr.  
Bartley C. Reuter  
Thomas M. Sagges  
Peter K. Schaeffer  
Drew F. Seibert  
Irving R. Spector  
Eugene Surasky  
Donald G. Tomlin  
Morton S. Weinstein  
Phyllis I. Wenner  
Stewart B. Whitmarsh

**Class of 1957**  
Matthew J. Cohen  
Leonard A. Cole  
Daniel H. Drake  
Elizabeth P. Fanelli  
John W. Feuerbach  
Lawrence S. Harte  
Esther G. Kaliff  
Stuart A. Kleit MD  
Burton S. Kornfeld  
Walt W. Magnus  
Louis A. Rigali  
Col. Lloyd F. Shaver, Jr.  
Joseph Stock  
Alan M. Stoneback

**Class of 1958—50th Reunion**  
Richard S. Altman  
Richard J. Castor  
Francis A. Defrino  
John S. Eppolito  
Norman F. Faulkner  
Abe M. Finton  
John M. Fosnocht  
Thomas J. Garrett  
Aaron M. Hader  
Rowland A. Hutchinson  
Robert J. Jarosz  
Leonard G. Jewson  
Arnold Katz  
J. David Kohn  
Robert B. Levin  
Arthur Marshall  
Barry D. Meiselman  
Albert Melli  
Alvin S. Morrison  
Joseph M. Nastri, Jr.  
Mary Lewis Berry Orsatti  
Joseph R. Pastorello  
Murray J. Plishtin  
Brian F. Pollack  
Charles E. Reich  
Myron I. Schaffer  
Gilbert Shuster  
Francis W. Siebert  
Albert J. Simkins, Jr.  
Marvin H. Sitrin  
Charles W. Tager  
Alfred S. Tong

Mary Gower Troisi  
Rev. James A. Tsigounis  
Robert J. Valent  
Kenneth W. Werley  
Minnie Cotler Zack

#### **Class of 1959**

Chris T. Armen  
Walter S. Bogad  
Theodore M. Bolotin  
Joseph R. Bonacci  
Donald G. Cheek  
Norman F. Davis  
Alan E. Deegan  
Gerald L. Fine  
Arthur M. Gitlin  
Jay I. Glat  
John P. Hellwege  
Charles W. Jensen, Jr.  
Philip W. Kitchin  
Richard C. Knoll  
Donald G. Lovejoy  
Fernando A. Mele  
Donald B. Olivie  
Omer E. Paquette  
Nicholas G. Pituras  
Frederick W. Rihartz  
James N. Sarantos  
Robert B. Spilker  
John T. Stevens  
Peter H. Strife  
Carmen A. Troisi, Jr.  
Barbara Dougherty Wall

#### **Class of 1960**

James L. Ackerman  
Capt. Barry Benn  
Philip S. Caplan  
Arthur S. Cobin  
Frederick L. Cox  
Richard C. Durbeck  
James H. Dyen  
Frederick J. Ferrari  
Arthur Fertman  
Robert A. Fischer  
Edgar F. Geigel MS  
Jack S. Ginsberg  
Daniel B. Green  
Arnold G. Greene  
William F. Lenker  
Philip A. Mielene  
Bertram H. Serota  
W. Roger Sorg  
Guy R. Welty  
Arthur E. Zack

#### **Class of 1961**

Carroll P. Andres  
Romeo E. Basa  
Benjamin Chan  
Lawrence G. Coulter  
Harry E. Dolph  
Allen Findley  
Martin Glassman  
Joseph A. Helfrich  
Robert A. Katin  
Sheldon Paley  
Louis Sandor, Jr.  
John W. Sheffield, Jr.  
Norman A. Whytock  
James Pinson Woolf

#### **Class of 1962**

Raymond J. Bastkowski  
Ross P. Cafaro  
Richard M. Feingold  
David G. Gifford  
Susan Bottorf Jackson

Florence C. Kollmar  
Barry W. Langsam  
Joseph Lipa, Jr.  
Donald B. Munger  
Norman Shapiro  
Robert J. Silverman  
Harry A. Snyder  
Eli Wilks  
Dennis E. Winn  
Elsa F. Wixom

#### **Class of 1963—45th Reunion**

Philip R. Barbell  
Howard Berg  
David J. Crossley  
Daniel P. Decesare  
Roger D. Goldberg  
Charles P. Hadtke, Jr.  
Herbert Hodess  
Sylvia Roche Joseph  
Michael M. Kay  
Robert L. Massucco  
Barbara A. Miller, RDH  
Lawrence N. Rouff  
Jacob A. Salzmann  
Sandra G. Sassaman  
Betty Brussel Shamas  
W. B. Somerville II  
Emanuel R. Tress  
David Ulanet  
Jeffrey A. Watson  
Robert H. Williams

#### **Class of 1964**

Myron Allukian, Jr., MPH  
Jerry Baldwin  
Otis G. Beck  
Clair William Flinn, Jr.  
Neal L. Freedman  
Marshall J. Goldin  
James K. Green  
Robert S. Hall  
William E. Jacoby, Jr.  
Lewis A. Kay  
Robert A. Lawton  
George A. Layman  
Warner E. Lund, Jr.  
Estate of Bruce W. Manning  
Frederick Meiselman  
Henry A. Miller  
Michael M. Perl  
James D. Smallwood  
James A. Tatoian, Jr.  
Paul F. Zizza, Jr.

#### **Class of 1965**

Peter J. Abell  
Joseph C. Au  
Gail Downs Baer  
Robert W. Beideman  
Frank R. Besson  
James D. Brackett  
Charles Bromberg  
Kenneth A. Chernow  
John W. Crowell  
William K. Deal  
Richard E. Derrick  
Paul J. Feinstock  
Martin H. Frost  
Robert G. Giannuzzi  
Thomas A. Giegerich  
Norman Goldberger  
Robert F. Goulstone  
Frank L. Greiner  
Kaye A. Haggerty  
William J. Haggerty  
Theron M. Hatch  
Leon C. Holt

Clare Hull Huleen  
Frederick O. Johnson  
Robert W. Kidd III  
Joseph Kornbleuth  
George B. Marschall  
Diane S. Martineau  
Robert S. Morgenstein  
Ronald M. Nakamura  
Elaine Mantzouris Stevenson  
Vija Tamuzs-Rubans  
Carl L. Tinkelman  
Terry D. Venturi  
Morris L. Weinman  
Arnold S. Weisgold  
Joseph R. Zaiantz

#### **Class of 1966**

Herbert M. Adler  
John M. Carroll  
Charles R. Dagati  
William David Dailey  
Bruce M. Elliott  
Stephen M. Fisher  
Ronald M. Gittess  
Jeffrey H. Harnett  
Robert Henner  
John A. Huleen  
Max A. Malkoff  
Franklin D. Niver  
Richard L. Pickett  
Jeffrey R. Plancey  
Monroe H. Rackow  
Albert G. Senger, Jr.  
Jerold R. Shapiro  
Henry J. Turner  
Judith Vanbergen Wagner

#### **Class of 1967**

Eric G. Anderson  
John T. Curtiss  
Francis J. Dermody  
John G. Gilhorn  
Michael Russ Glogoff  
Alexander W. Hochheiser  
Miles A. Kletter  
Jerome M. Laffer  
Harvey S. Levine  
Walter E. Maust, Jr.  
Roger H. Mcconnell  
Charles B. Millstein  
Richard J. Pitz  
Jeffrey B. Shapiro  
Gerald W. Springstead  
Norman H. Stoller  
Thomas N. Theise  
Louis S. Vodzak  
Donald K. Weilburg  
Marilyn Snyder White  
Thomas R. Wilks  
Dennis E. Winson

#### **Class of 1968—40th Reunion**

Stephen P. Altaker  
Randall G. Baldwin  
Frederic J. Freidus  
Sidney Gutsin  
Donald M. Humen  
Helen C. Komazec  
Gerald H. Kreinces  
William S. Laubach  
Arthur S. Mollit  
Evan C. Moll  
Robert T. Montbach  
Deborah S. Niederer  
Janice S. Ruiz  
Carl W. Schamu  
Dorothy Herrick Washburn  
C. Robert Waters, Jr.

#### **Class of 1969**

Bruce I. Braverman  
Ashley M. Brown  
Michael L. Brugg  
Julia A. Carr  
Victor S. Dietz  
James R. Elder  
Andrew P. Galante  
Arnold I. Galer  
John F. Gell  
Mark A. Goldblatt  
Charles R. Lipton  
Jeffrey I. Lipton  
James M. Mcnerney  
Biddle F. Morris  
Judith Sinanis Nist

#### **Class of 1970**

David K. Anderson  
Jeffrey A. Bassin  
Gary W. Bigsby  
Nancy Hunger Bishop  
William J. Bisignano, Jr.  
Danny E. Black  
Jeffrey Chait  
Alvin F. DeSiena  
Charles R. Dufort  
Keith W. Eveland  
Alan H. Frankel  
James R. Granite  
Michael A. Hack  
Andras G. Haris  
Frederick D. Hicks  
Dennis B. Jaffe  
John W. Jost  
Margaret D. Kauffman  
Lawrence Kessler  
Miles E. Kuttler  
Donald F. Major  
George H. Master  
Robert E. Nist  
Albert M. Price  
Sara M. Prioleau  
David L. Rooney  
David P. Rossiter III  
W. Ellis Smith  
Brennan M. Thornton

#### **Class of 1971**

Frank Adshead  
Robert B. Bowden  
Alvin T. Boyd  
Patricia Anne Cohen  
Steven N. Cohen  
Robert J. Collins  
Stephen A. Cooper  
C. Dwight Decker  
Brian C. Dubin  
Maureen M. Fedorishen  
Joseph E. Gian-Grasso  
Allan C. Goldfeder  
Harry P. Grossman  
Howard B. Grover  
Robin David Harshaw  
Kenneth A. Ingber  
Peter F. Johnson  
Mark A. Judy  
Patrick M. Keeley  
Michael J. Kish  
Donald E. Kondrat  
Peter Steven Lamm  
Sheppard B. Mollick  
Frederic Paperth  
Mark D. Rubin  
Thomas L. Snyder  
Robert C. Stockdale  
Madeleine C. Uhlhorn  
Mark Unger  
Douglas C. Walters

#### **Class of 1972**

Robert B. Amley  
Linda Cree Amsterdam  
David M. Barnett  
Paul J. Batastini  
Jan Lerman Erlanger  
Robert H. Fish  
Paul Gingras  
Myron S. Graff  
Joseph R. Greenberg  
Lawrence T. Herman  
Edward P. Johnson  
Edward L. Jordan  
Howard P. Kessler  
Susan M. Lee  
Fred J. Levin  
Martin D. Levin  
Richard E. Levitt  
David Levy  
Richard Mao  
Robert B. Martin  
Alan M. Meltzer  
Irwin H. Meslin  
Charles A. Miller III  
Frederick R. Molander, Jr.  
Janet Salanik Olsen  
Saul R. Payne  
Douglas E. Peterson  
Peter I. Pfaffenbach  
Jay M. Rashbaum  
Richard P. Simitis  
Barry D. Wagenberg  
James B. Wolf

#### **Class of 1973—35th Reunion**

Robert M. Atebara  
David W. Belardi  
Charles M. Brenner  
Warren A. Brill  
David Brother  
Dennis N. Cohen  
Regina Dolan Dunn  
Nelson J. Goodman  
Elliott K. Gutman  
Thomas D. Hutchinson  
Michael N. Klein  
Kenneth W. Laudenschick  
Vernon Loveless  
Vincent J. Mannino  
Randolph C. Myerson  
Michael A. Petrillo  
Ralph S. Pfeifer  
Lewis E. Proffitt  
Cathy A. Reynolds  
Paul T. Rubin  
Bruce D. Shoicket  
Rachel Brandes Shoicket  
Donald H. Silverman  
Mark A. Taddonio  
Joel S. Teig  
Michael A. Wernick  
John A. Zalatan

#### **Class of 1974**

Harvey J. Barbag  
John W. Burk  
Marie F. Chiang  
Walter I. Chinoy  
David S. Crimmins  
Stewart S. Danziger  
Steven R. Diak  
Mark J. Doherty  
Ellen Eisenberg  
Eddy Gindi  
Dr. Jaclyn M. Gleber  
Ronald J. Gutman  
Marc W. Heft  
Robert P. Indyk

Richard M. Kanter  
Allan D. Klenetsky  
Robert M. Krauss  
Jeffrey M. Leitner  
Kim R. Montgomery  
Christopher E. Neale  
Jay M. Neuschatz  
Ronald Michael Pross  
Steven A. Roth  
Edward P. Roy  
Richard W. Ruby  
Michael B. Rulnick  
Peter C. Ryan  
Robert M. Sorin  
Richard C. Squillaro  
Martin Weinberg  
William Wolfson  
Peter C. Wright

#### **Class of 1975**

Melvin S. Babad  
Daniel P. Casullo  
Leonard A. Cherkas  
Susan M. Dowds  
Reginald B. Edmonds  
Ronald Feldberg  
David M. Jerud  
Richard P. Klich  
Michael A. Krane  
Jeffrey L. Lite  
James H. Mendillo  
Pamela S. Minter  
Fedele A. Musso  
Louis E. Rossman  
Kenneth R. Schneider  
Mitchell B. Schwartz  
Iraj Shafagh  
Philip A. Shore  
William J. Vigneux  
Robin Friedmann Waner  
Arthur Z. Weiss  
John A. Wittner

#### **Class of 1976**

Edwin C. Bartine  
Rebecca L. Berger  
Dennis M. Byrne  
Michael G. Cook  
Philip A. Cooper  
Robert M. Fleisher  
Robert J. Golden  
Dr. Alan J. Guber  
Rosario F. Mayro  
Brian R. McCurdy  
M. Jeffrey Morton  
Neil L. Moscow  
Bruce E. Ollins  
Peter J. Rattigan  
Howard J. Ritt  
Lisa R. Rosenberg-Cohen  
David M. Roshkind  
Joe T. Ruby  
Steven Alan Schwartz  
Kenneth L. Speicher  
Eric H. Spellman  
Walter G. Spigelman  
Robert L. Wagner

#### **Class of 1977**

James T. Amsterdam  
Alexandra A. Baker  
Elise B. Bassin  
Robert B. Bookman  
Irwin H. Brenner  
Israel Brenner  
Peter G. Campbell  
Donald H. Currie  
G. Frans Currier

Peter R. Flynn  
Francis G. Forwood  
Laurie L. Frischman  
Stephen F. Hartman  
Gregory G. Indyke  
Lorraine R. Jerud  
Fred B. Kastenbaum  
Kenneth G. Koktish  
Walter K. Kulick  
Robert N. Lipner  
Dana L. Manchester  
Bruce A. Miller  
Robert Resnick  
Charles M. Robbins  
William W. Roberts III  
Cletus W. Schwegman, Jr.  
Mitchell A. Smolow  
Raymond M. Solomon  
Steven J. Solow  
John G. Steciw  
Jo Apple Steinhart  
P. Deborah Weisfuse  
Alan M. Zaretsky

#### **Class of 1978—30th Reunion**

Judith S. Amsterdam  
Lawrence A. Amsterdam  
Jay R. Augenstein  
Ervin Braun  
Robert B. Chastant  
Allen Y. H. Cheng  
Bonnie Field Crowley  
Lynda Phillips Danvers  
Arthur F. Dean  
Lawrence M. Erwich  
Gary J. J. Galovic  
William A. Greider  
Stanley C. Heifetz  
Andrew G. Jacobson  
Elaine S. Killough  
Patricia A. Kissel  
Eileen A. Leone-Taylor  
Farideh Moattari Madani  
Mansoor Madani  
Andrew S. Melinger  
Stephanie Deardorff

Merrifield  
Harvey Nash  
James L. Pearlstein  
Larry Pepper  
David M. Press  
Steven J. Rothenberg  
Sherry Shapiro  
John R. Shaw  
Donna Lewis Smolow  
Carolee S. Solof  
David M. Taylor  
Cheryl Lang Ullman  
Dennis C. Warshowsky  
Patti Lee Werther  
Gordon N. Wolffe

#### **Class of 1979**

Thomas E. Boytim  
Ralph J. Bozza  
Richard C. Buzin  
Andrew B. Casabianca MD  
Jireh I. Chao  
Richard E. Chodroff  
Gary A. Di Santo-Rose  
Elizabeth A. Duane  
Martha Dunham Catafamo  
Hal D. Fruchtmann  
Gregg M. Garcia  
Madeline S. Ginzburg  
Stephen H. Grossman  
Thomas W. Herfort  
Michael L. Iczkovitz

William G. Kelly  
David A. Klebanow  
Jeffrey C. Kleiman  
Anna Kornbrot  
David T. W. Lau  
Pasquale J. Malpeso  
Paul J. McKenna, Jr.  
Debra A. Oro  
Robert John Oro  
Hugh L. Pollack  
Saul M. Pressner  
Joanne S. Reiffe-Fishbane  
Alan B. Rosenthal, PC  
Thomas R. Schneid  
David Tai-Man Shen  
Leonard C. Taddei, Jr.  
Marc S. Tindell  
Michelle Brettler Warren  
Robert E. Weiner  
Donald C. Yu

#### **Class of 1980**

Peter R. Auster  
James G. Barrer  
Joseph Bartoloni  
Capt. Jay A. Black  
Sherrie Allemang Black  
James V. Bordon  
Gail Spiegel Cohen  
Richard Copell  
Debra Cairo Dyer  
Daniel C. Eckhard  
Philip H. Ehret  
Lynn A. Elliott Maziarz  
Hillel D. Ephros  
Richard L. Fiese  
Robert C. Fisher  
Nancy J. Flint  
Sharon Kift Hayes  
Bonnie Berman Henick  
David S. Hershkowitz  
Debra Snyder Hirsh  
Gary L. Huntington  
Christopher H. Joy  
Marc F. Lipkin  
Donald J. Millner  
John F. Powers  
Steven Jay Reubel  
Charles M. Riotto  
Andrew G. Rosenfeld  
Dr. Marian G. Royer  
Francis G. Serio  
Paul W. Teplitsky  
Robert C. Todd III  
Edward S. Yalisove  
Jonathan Zamzok

#### **Class of 1981**

J. Mark Bayless  
Paul W. Brown  
Ramsey H. Chew  
William W. M. Cheung  
Jack H. Corn  
Isaac Garazi  
Jeffrey M. Ginsberg  
Dorothea R. Giordano  
David J. Hauss  
Ronald T. Hwang  
Kazumi Ikeda  
James E. Jacobs  
Anita Nayar Joy  
John J. Keating III  
Steven J. Kerpen  
Jerome A. Kleponis  
Patricia A. Ludwig  
Lloyd M. Mahler  
Simon Milman

Randolph L. Mitchell  
Richard J. Phillips, Jr.  
Michael Plotno  
Laurence D. Popowich  
Peter S. Rosenman  
Gary W. Seldomridge  
Susan L. Stern  
John A. Weierbach, II  
Mark J. Weingarden  
Tanja J. de Marsche

#### **Class of 1982**

J. Craig Alexander  
Normand S. Boucher  
Anne M. Chalemin  
Norman L. Clark  
James E. Clayton, Jr.  
John M. Cross  
Francine Trzeciak Cwyk  
James H. Doundoulakis  
Gary S. Dworkin  
John C. Ford  
Lawrence E. Glaser  
Jeffrey A. Goodman  
Marsha Herzstein-Wolfe  
Christopher B. Hill  
Christopher V. Hughes  
Miriam Susan Kaye-Fleisher  
Ramona M. L'Heureux  
Sandra L. Mellinger  
Joel I. Nathanson  
David A. Newman  
Scott A. Odell  
Francine B. Rebhun  
Robert I. Rosner  
Jeffrey Rubin  
Mark A. Ruggerio  
Robert Gerald Savarese  
Debra Pinelli Tamasi  
Martin Trope  
Linda C. Weisenfeld  
Warren D. Woods

#### **Class of 1983—25th Reunion**

Beth A. Ageloff-Posner  
Robert J. Bernstein  
William H. Bohrod  
David N. Bordonaro  
Abby J. Brodie  
Scott J. Chanin  
Yung S. Chung  
Amita R. Desai  
Robert A. Dores  
Lee B. Durst-Roisman  
Robert A. Engl  
Paul R. Feldman  
Martin J. Glassman  
Steven E. Haas  
Ching Yue Elizabeth Kao  
Lt. Col. Thomas M. Kiefer  
Larry Z. Koren  
Michael W. Lew  
Kenneth Adams MacAfee  
Vanessa A. Morenzi  
Michael R. Nawfel  
Michael E. Oppenheimer  
Robert Martin Paolino  
Allen D. Pearlman  
Linda E. Rigali  
Walter F. Russo  
Gail Ellen Schupak  
Shari Samansky Summers  
Gary P. Swistak  
David S. Tarica  
Michael D. Yasner  
Valerie Eisenberg Yasner

#### **Class of 1984**

Cindy M. Behrens  
Steven C. Blutfield  
Peter Chin  
Mitchell G. Cohen  
John J. Curry  
Annette Kriegel Davidoff  
Mark B. Desrosiers  
Leslie R. Elfenbein  
Joel Elliot Elfman  
Mark W. Evans  
Robert D. Funk  
David A. Goodman  
Paula Grant  
Mark Raymond Greco  
Robert S. Gurmankin  
Steven C. Isaacson  
David M. Jacobowitz  
Joseph L. Keefer  
John Y. Kim  
David Mark Klugman  
Paul Y. Lee  
Eric M. Levine  
Keith D. Libou  
Jane E. Ligums  
Laura Clemente Mackey  
Michael W. Migdal  
Peter W. Ngan  
Brenda G. Paulen  
Alena E. Raidl  
Richard D. Riddle  
Jane Russo  
Stuart M. Schnall  
Matthew M. Segal  
Michael S. Shreck  
Stephen A. Solomon

#### **Class of 1985**

Jay Lee Arlick  
Stephen R. Bradley  
S. I. Braunstein-Trager  
Eric R. Carlson  
Laurence G. Chacker  
Sharon Jill Chester  
Ronald E. Clark  
Heidi C. Crow  
Gregory L. French  
Joseph A. Ilacqua  
James A. Isaacson  
Richard D. Isaacson  
Edward I. Jutkowitz  
John I. Kershman  
James E. Krochmal  
Stanley M. Levenson  
John F. Lhota  
Sarah M. Lynch  
Thomas A. McGraw  
Saundra B. Reilly  
Richard A. Rifkin  
Peter D. Russo  
Donald J. Salomon  
Maria Christina Sevilla  
David M. Sheintop  
David Richard Silver  
Keith F. Silverman  
Timothy P. Sweet  
David W. Tambor  
Eric A. Wachs

#### **Class of 1986**

Lawrence Michael Bodenstein  
Michael Andrew Carol  
Paul J. Carpinello  
Lee D. Fillak  
Paula Leontzwich Fillak  
John L. Hayes  
Jeffrey R. Klein  
Daniel R. Kreshtool



Emmy Omoto  
Gary A. Orbach  
Leighton R. Philbrick  
David P. Pitman  
Thomas G. Planzos  
Mark Bryan Tornatore  
Nicholas Charles Tucci

#### Class of 1987

William Vincent Baldassano  
John David Beckwith  
Guy Coby  
Marc Anthony Cozzarin  
Robert Joseph Demarco  
Jeannette P. Desino  
Edward Bronislaw Drozd  
David Brian Ettinger  
Donna M. Federici  
Deborah L. Fishman-Kahn  
Albert Smith Harris III  
Thomas A. Herberger  
Donald Donguk Kim  
Mark David Kopera  
Lawrence Mark Levin  
Georges Paul Martin  
Thomas Paul Petrick, Jr.  
Jay Rubin  
Michelle Kauffman Sandler  
Dean Ford Sophocles

#### Class of 1988—20th Reunion

John Michael Capogna  
R. Allen D'Innocenzo  
W. D. Fitzhugh III  
Douglas Scott Harte  
Jerald Samuel Matt  
Francis Joseph McClain  
Robert Frank Otto  
Anthony M. Polimeni  
Sadhana Prasad  
Thomas Basil Puschak  
Michael I. Rouff  
Hilton Zvi Segal  
Tara Sexton  
Paul Michael Tedeschi  
Paul Edward Tomasovic

#### Class of 1989

Susan M. Chialastri  
Michael J. Feldman  
Adam Marc Goodman  
Lori Debra Hurst  
Alice K. Lau  
Kevin P. Lucas  
Joyce A. Perih

#### Class of 1990

Lawrence B. Caplin  
Howard E. Goldstein  
Daryl Klopp  
Susan S. Ling  
Lori B. Lubliner-Robinson  
Anita Marie Milici  
Marlene E. Sardina-Kelly  
Lawrence R. Selinger  
Sharon M. Verdinelli  
Roanne J. Wiczer

#### Class of 1991

Karl A. Arakelian  
Victor J. Buccellato  
Stephanie E. D'Aprile  
Andrew T. Frank  
Daniel J. Gesek, Jr.  
Anthony R. Harlacher  
Bradford S. Jungels  
Jeffrey A. Levin  
Joseph Stephen Rava

Edward John Sharkey  
Mandy-Pen Shui  
Tony L. Skanchy

#### Class of 1992

Paul J. Anagnostakos  
Ann Kearney Astolfi  
Kathleen E. Herb  
John S. Horchos  
Edward James Miller, Jr.  
John F. Moffett  
Masooma Saba Zaidi

#### Class of 1993—15th Reunion

Paul Luff Boger  
Bharat Chauhan  
Najibe Haddad Dow  
Dorit G. Hermann-Chasen  
Betsy Grand Kaplan  
Brian P. McAndrew  
Samantha A. Vitagliano

#### Class of 1994

Sonia Barbosa-Ruiz  
Frank R. Besson, Jr.  
Geraldine L. Besson  
Joy Bockstein Abt  
Therese DiFlorio Brennan  
Staci B. Frankowitz  
Alan R. Hecht  
Syamala Jasti  
Robert S. Kane  
Kalindi P. Khetia  
Jung Kook Kim  
Brian B. Lee  
Dr. Jose R. Lugay  
Laurene Alyse Marks-Wolf  
Wei-Hsin Men

#### Class of 1995

Marielena Arroyo-Pratt  
Chingshun Jason Chang  
Sara Corinne Cohen  
Rami Jandali  
Nuntiya Kakanantadilok  
Rustin M. Levy  
Beth Prosterman  
Maria-Paz U. Smith

#### Class of 1996

Lynda C. Chen  
Bartley L. Larrow, Jr.  
Joanna Z. Levin  
Timothy C. Lin  
Donald Tsung-I Liu  
Mary Elizabeth Mihalakis  
Constantine Simos  
Marjean E. Stokes-Monroe

#### Class of 1997

Joanna Ioana Bodea  
Patrick T. Cuzzo  
Racquel M. Johnson  
Shahin Kazemi  
Mindy Ok  
Spencer-Carl Saint-Cyr  
Catherine Serena Uybeckuat

#### Class of 1998—10th Reunion

Luz Marina Aguirre  
Frank R. Batastini  
Col. Eric J. Brendlinger  
Jeffrey P. Chen  
Scott C. Dickinson  
Cathleen M. George  
Fahmida Hussain  
Jyoti Patel  
Andrew T. Wilson  
Wallace W. Wong

#### Class of 1999

Matthew Baron  
Sandra Stroecker Beckett  
Matthew J. Busch  
C. Matthew Forster  
D. L. Kilmartin  
Philip L. Michaelson  
Vincent Mongiovi  
Fariba Pour Ansari

#### Class of 2000

Jennifer Lee Kazemi  
David A. Kessler  
Takashi Koyama  
Brian Lee  
Brett R. Levin  
Behnaz Shakoori  
Andrew P. Woo  
Eric Wu

#### Class of 2001

Nina V. Aks  
Denny Y. Fang  
Louis T. George  
Adena M. Goldman  
Michael S. Harris  
David C. Hufham  
Jasminka Kopanja  
WooCheol Lee

#### Class of 2002

Guadalupe E. Garcia  
Daniel H. Hwang  
Sharon Johnson  
Penny M. Leong  
Shirley K. Molina  
Ritesh Radadia  
Janine R. Trindade  
A. Melissa Vargas  
Sima S. Yakoby

#### Class of 2003—5th Reunion

Michael Do  
Carey L. Fister  
Carlos Enrique Gomez  
Jacquelyn D. Polinsky

#### Class of 2004

Matthew S. Applebaum  
Jessica L. Jarecki  
Jung Lim  
Erick R. Menegazzo  
George Suranyi

#### Class of 2005

Enehizena N. Ehondor  
Lydra Tapija

#### Class of 2006

Adam C. Barbag  
Boriana Canby  
Joel B. Frankel  
Marcela Herrera  
Tyler H. Jolley  
Jeonghun Lee  
Hoang P. Nguyen  
Derek A. Sanders

#### Class of 2007

Laura S. Cappetta  
Peter Rouff

#### Class of 2011

Elise V. Hurrell

## Friends Donors

*This list includes all friends who made a gift to any Penn Dental Medicine fund in 2007–2008. We are grateful for their support as their generosity sustains Penn's preeminence in dental medicine.*

Sandra K. Alpert  
Deborah Rosenblum Arlick, C'84, GED'84  
Mr. & Mrs. Stanley H. Back  
Dr. Robert L. Baer, CHE'65, GEE'67, GR'71  
Natalie Baker  
Bonnie Baldassano  
Edward A. Barrett  
Blake Bayley  
Renee Bayley  
Mary Ellen Beideman, GNU'88  
David J. Berner  
Sheri L. Berner  
Phyllis Bienstock  
Gayle M. Bomberger  
Margaret Bordonaro  
Mr. & Mrs. Scott Born  
Bernice Bradin  
Vera Bradin  
Jim Brandenburg  
Laurie Brandenburg  
Michael A. Brodie, C'78, W'78, WG'84  
Loretta T. Brody  
Evelyn Hymowitz Brown, ED'54  
Jeanette Burghy  
Corinne L. Cacas  
Christina Young Chao, MD, CW'74  
Susan Dean Chodroff, NU'80  
Mr. & Mrs. Alvin J. Cohen  
Elaine Cohen  
Jennifer L. Conry  
Barbara E. Cowen  
Stephen H. Cowen, WG'70  
Richard P. Crowley, GCH'80  
Katherine Cutchins-Billingham, GED'54  
Ellen B. Daniels  
Barrey Danvers, V'80  
Neil W. Danzger, EAS'85, W'85  
Sharon Feldman Danzger, W'87  
Barbara Hecht Davis, MT'59  
Howard B. Davis, W'59  
Mark R. Davis  
Barbara S. Dean, PT'77  
Dianne Woods Defrino, CW'58  
Joel S. Delfiner, M'79  
Dr. and Mrs. E. J. Dellheim  
Dr. Brees M. Dickinson, M'34  
Carol Schilling Does, W'82  
Christopher D. Dorr, DMD  
Dr. Matthew J. Doyle  
Linda DuBois-Romano  
Natalie Zellat Dyen, CW'66, GED'67  
Sheila Anne Elliott, NU'67  
Mr. & Mrs. Andrew M. Epstein  
Mr. & Mrs. Fred Epstein  
A. Steven Fabietti, Esquire, L'96  
Catherine F. Fedor

Jeffrey A. Fedor  
Dr. Alan Feldman  
Mr. and Mrs. David Feldman  
Barbara Fine, ED'57, GED'59  
Suzanne C. Fordham  
Carolyn D. Forwood  
Victor H. Frank, Jr.  
Peggy Frankel  
Ina M. Galer, GED'68  
Anita Garazi  
Joan Gerber  
Janice M. Gian-Grasso, GNU'77  
Dr. Elena Gizang-Ginsberg, C'81  
Vicki Dresner Glaser, G'82  
Eleanor Behren Glat, GED'60  
W. Darby Glenn III, M'56  
Harriet Krangel Goldin, CW'62  
Criswell Cohagan Gonzalez  
Jaime Butterman Goodman, C'86  
Dr. Betsy Harris Granite, GR'85  
Mr. & Mrs. Edward Gusky  
William N. Hanafey, Jr.  
Mr. and Mrs. R. R. Hartranft  
Dr. & Mrs. Richard Hayashi  
Dr. Joseph L. Herman  
Dr. Ellen Heuman  
Jung San Carolyn Huang  
Denise G. Huntington  
Dr. Ella Hurrell  
Dr. John Hurrell  
Dr. Ho K. Hwang  
Karen Rones Jacobson, GED'77  
Dr. Marjorie K. Jeffcoat, HOM'04  
Robert L. Jeffcoat  
Mr. & Mrs. Jin Jin  
Bentha Johnson  
Thomas C. Jordan  
Naser Kamkar  
Hope Rothenberg Kessler, CW'67, ASC'69  
Sung-Kyo Kim, D.M.D.  
Carolyn Taylor Kitchin, MD, CW'53  
William G. Komazec, V'68  
Dr. and Mrs. Paul Koppelman  
Harriet J. Koren, Esquire, GL'83  
Sondra P. Kornfeld, PT'55  
Judith C. Koss, C'81  
Michael G. Kurcias, Esquire, W'55, L'58  
Nan A. Lamm, GED'71  
Jacqueline S. Leder-Ettinger, GNU'87  
Dr. and Mrs. Suk Wan Lee  
Susan Levin  
Marlene S. Levine, CW'54  
Deborah Pollock Levitt, CW'69  
Dr. Harvey L. Levitt  
Mr. and Mrs. Jeffrey A. Liberman  
Dr. Michelle Limoli  
Mr. & Mrs. Lihyeh Liou  
Pauline Lowe-Ching  
Stanley Lowe-Ching  
Marie J. Lowrey, CW'50  
Philip W. Maas, Jr.  
Mr. & Mrs. Joseph Malazinsky  
Mr. & Mrs. Bharat Maniar  
Beatrice Mann  
Bruce D. Manson, WG'87

Dr. and Mrs. G. A. Markowitz  
Marian Schmidt Marschall,  
CW'62  
Allen L. Martineau, C'65  
William E. Mathews, WG'56  
Julian Mayro, MD, C'54  
Ellice McDonald, Jr., W'36  
Rosa Hayward McDonald  
Toba R. Meiselman, CW'56  
John A. Mengers  
Mr. & Mrs. Tony Merlino  
Estate of Harriet Worrall  
Mershon  
Mr. and Mrs. Thomas Mistler  
Deborah Nash Molander,  
CW'71  
Dr. Susan Morgenstein  
Dorothy Mc Murray Mosch,  
HUP'55, NU'55  
David R. Musich, D.D.S.  
Mr. and Mrs. Michael Myers  
Mr. & Mrs. Steve Nelson  
Mr. & Mrs. Leonard M. Neuss  
Mr. and Mrs. Thanh Nguyen  
Dr. Fereshteh Nourafshar  
Maureen O'Hern, HUP'54  
Carolyn J. Overholt  
Glenn R. Oxner  
Mr. & Mrs. Marc L. Paley  
Dr. & Mrs. George Papasikos  
Dr. John K. Pershing, Jr.  
Diane N. Peterman  
Martha Pollack  
Jordan F. Posner, WG'86  
Bernard Poussot  
Dr. Susan Hymes Pross, GR'75  
Florence Banks Reilly, CW'44  
Margaret Dillon Reuter,  
MT'56  
Vincent Reynolds  
P. L. Rosenbaum-Libou, SW'83  
Julia L. Rosner, W'80  
Lorain R. Rothstein  
Robyn Zimmernan Rubinoff,  
C'88, W'88  
Ronald V. Runyon  
Lois Brown Schaffer, ED'59  
Mr. and Mrs. Edgar Schnabel  
Phyllis Berman Serota, CW'58  
Mr. & Mrs. Barry S. Shapiro  
Shirley Ruth Shils, CGS'84,  
CGS'90, G'93  
Mr. and Mrs. Robert Snyder  
Susan H. Solow, CGS'77  
Dr. Barbara J. Steinberg  
Shirley R. Steinberg  
Russell K. Street, D.D.S.  
Melody Troeger Sweet, GR'85  
Diane M. Tindell, NU'78  
Janice Tome  
Mark A. Trager, MD, C'78  
RES'85  
Alison Slap Tress  
Dr. Idit Trope, GR'85  
Dr. and Mrs. H. O. Trowbridge  
Juanita M. Tryon  
Helene Udine  
Morey Udine  
Decker W. Uhlhorn, C'69  
Rafael A. Vargas, W'98  
Betty S. Vozzak, DDS  
Myra Chernoff Weisgold,  
CW'61  
Mr. and Mrs. D. R. Wesolowski  
Susan B. West  
Margaret S. Williams, CW'62,  
GED'85

3i Implant Innovations, Inc.  
C. C. & S. K. Alpert  
Philanthropic Fund  
Alta View Orthodontics  
American Academy of  
Periodontology  
Foundation  
American Heart Association  
Associated Dental Specialties  
Astra Tech Inc.  
Robert L. & Gail D. Baer  
Charitable Gift Fund  
Brewer Dental Specialists PA  
Bucknell University  
Cornerstone Dental  
David R. Musich & Matthew  
J. Busch D.D.S., LTD  
Dentsply International Inc.  
Breese M. Dickinson Family  
Trust  
Eastern Dentists Insurance  
Company  
EndoNet Consulting, LLC  
Etkon Usa, Inc.  
Family Dental Services, PC  
Michael J. Feldman Family  
Philanthropic Fund  
David & Debra Feldman  
Philanthropic Fund  
Foundation for The Carolinas  
Frank Family Fund  
Joan & Joseph Gerber  
Advised Fund  
Hirschberg, D. D. S. & Auster,  
D. M. D., PLLC  
Hoffmann-La Roche Inc  
Holton-Master Charitable  
Fund  
James D. Hudson, D.M.D., PC.  
Infinite Endodontics  
Institut Straumann AG  
Jewish Communal Fund of  
New York  
Steven J. Kerpen, D.M.D., PC  
Thomas M. Kiefer, D.M.D., PA  
Laffer Foundation  
Litowitz Foundation  
Mann Family Foundation  
Masel Industries Inc.  
Benjamin and Mary Siddons  
Measey Foundation  
Multiple Myeloma Research  
Foundation  
Nobel Biocare  
NY Center for Specialized  
Dentistry  
Oro Dental Medicine, PC  
Orthodontics For All Ages  
Jody Paolino  
Parent Proj Muscular  
Dystrophy  
Pennsylvania Dental  
Foundation  
Professional Endodontics, Inc.  
Sidney G. Rachlin Fund  
Irving and Lorain Rothstein  
Fund  
Louis Sandor Jr., DDS, PA  
Mark Alan Schaum, PA  
Henry Schein Inc.  
Edward B. and Shirley R. Shils  
Foundation  
Significance Foundation  
Pamela & Michael Smith  
Family Foundation  
Straumann U S A  
Strohecker Orthodontic Assoc.  
Synergy Dental Specialists

Total Dental Care PC  
United Way of Carlisle &  
Cumberland  
WellPoint Health Networks Inc.  
Estate of William L. Wells  
Woods Orthodontics, P.C.  
Wyeth Pharmaceuticals

## Tribute Gifts

*This list includes all donors who made tribute gifts of any amount to any Penn Dental Medicine fund in 2007-2008. For many, a gift to the School is more than just a financial contribution — it is a meaningful way to honor or remember someone special in their lives.*

**In Honor of Dr. William Bowe (D'39)**  
Bucknell University

**In Honor of Jake Branzberg**  
Louis E. Rossman, D'75, GD'77

**In Honor of Julian Brightman**  
Ronald V. Runyon

**In Memory of Seymour L. Brown (D'52, GD'57)**  
Evelyn Hymowitz Brown,  
ED'54

**In Memory of Frederic M. Chacker (D'59, GD'62)**  
William W. Roberts, III, C'72,  
D'77, GD'78  
Tanja J. de Marsche, DH'75,  
GD'81

**In Honor of Dr. Mitchell Charnas (C'76, D'81)**  
Mr. and Mrs. Jeffrey A.  
Liberman

**In Honor of William Wai Man Cheung (D'81, GD'82)**  
Criswell Cohagan Gonzalez

**In Honor of Class of 1953**  
Joan Gerber  
Joseph I. Gerber, D'53

**In Memory of Betty A. Cohen**  
D. Walter Cohen, C'47, D'50

**In Honor of Richard A. Collier**  
Joseph Lipa, Jr., D'62

**In Memory of Rebecca Deblinger's Father**  
Louis E. Rossman, D'75, GD'77

**In Memory of Rob Deblinger's Mother**  
Louis E. Rossman, D'75, GD'77

**In Memory of Anne d'Harnoncourt**  
Louis E. Rossman, D'75, GD'77

**In Honor of Mike Fedder**  
Louis E. Rossman, D'75, GD'77

**In Memory of, Dr. Kenneth Fieldston (D'74)**  
Barbara E. Cowen  
Stephen H. Cowen, WG'70

**In Honor of Dean Raymond Fonseca**  
Anna Kornbrot, D'79, GD'82  
Lawrence Mark Levin, MD,  
D'87, GD'92

**In Memory of Florence Fuller**  
Deborah L. Fishman-Kahn,  
D'87

**In Memory of Bal K. Goyal (D'81, GD'81)**  
Dr. and Mrs. H. O. Trowbridge

**In Memory of Louis I. Grossman (D'23, HON'78)**  
Robert L. Massucco, D'63

**In Memory of Dr. Thomas G. Herb**  
Kathleen E. Herb, C'88, D'92

**In Memory of Saul H. Herman (D'63)**  
Mr. & Mrs. Stanley H. Back  
David J. Berner  
Sheri L. Berner  
Mr. & Mrs. Alvin J. Cohen  
Elaine Cohen  
Barbara Hecht Davis, MT'59  
Howard B. Davis, W'59  
Mark R. Davis  
Mr. & Mrs. Andrew M.  
Epstein  
Mr. & Mrs. Fred Epstein  
Mr. & Mrs. Edward Gusky  
Rene Handel  
Dr. Joseph L. Herman  
Mr. & Mrs. Joseph Malazinsky  
Mr. & Mrs. Leonard M. Neuss  
Mr. & Mrs. Marc L. Paley  
Robyn Zimmernan Rubinoff,  
C'88, W'88  
Mark Alan Schaum  
Mr. & Mrs. Barry S. Shapiro  
Helene Udine  
Morey Udine

**In Memory of Jack Kaplan**  
Dr. Marjorie K. Jeffcoat,  
HOM'04

**In Memory of Mrs. Kaplan's sister Ellen**  
Louis E. Rossman, D'75, GD'77

**In Memory of Mr. Chang Tse Liang**  
Dr. Marjorie K. Jeffcoat,  
HOM'04  
Robert L. Jeffcoat

**In Memory of Shelly Liss' Father**  
Louis E. Rossman, D'75, GD'77

**In Memory of Dr. Charles F. Maddox**  
Mary G. Maddox Silverstein,  
DH'49

**In Honor of Dr. Prathima Mamilla (D'05)**  
Vincent Reynolds

**In Memory of Florence C. Mitchell**  
Randolph L. Mitchell, D'81

**In Memory of John W. Mosch (C'39, D'41)**  
Dorothy Mc Murray Mosch,  
HUP'55, NU'55  
Paul G. Mosch, C'54, D'56  
Irving M. Rothstein, C'38, D'41  
Lorain R. Rothstein

**In Memory of Dr. Hal Rosenthal's mother**  
Louis E. Rossman, D'75, GD'77

**In Honor of Louis E. Rossman (D'75, GD'77)**  
Dr. Alan Feldman  
Dr. Barbara J. Steinberg

**In Memory of Mrs. Mickey Sablosky**  
Louis E. Rossman, D'75, GD'77

**In Honor of Dr. Keith Silverstein (D'91, M'94, GD'97, RES'97)**  
Mr. & Mrs. Scott Born

**In Honor of Mrs. Stephanie Stahl**  
Louis E. Rossman, D'75, GD'77

**In Memory of Adele Wolf**  
Louis E. Rossman, D'75, GD'77

**In Memory of David S. Unger (D'53)**  
Joyce Barnett Unger, DH'51

*This issue of the Honor Roll represents activity in Fiscal Year 2008 (July 1, 2007 through June 30, 2008).*

*We have made every effort to ensure the accuracy of this report. If your name has been omitted or misprinted, please accept our sincere apologies and notify the Penn Dental Medicine Office of Development and Alumni Relations at 215-898-8951.*

# Alumni

## NEWS

### Alumni Weekend 2008

Penn Dental Medicine alumni and guests gathered May 16–17 for Alumni Weekend 2008. There was much to celebrate, including reunions for classes ending in “3” or “8” and the presentation of the 2008 Alumni Awards of Merit. This year’s Alumni Award of Merit recipients were Drs. Marc Ackerman (D’98), Leonard Cole (GD’57), and Rowland Hutchinson (GD’58).

Some of this year’s other activities included student-led tours of the School, an open house in the virtual reality simulation lab, and the alumni picnic. Reunion class dinners were held again at the Union League of Philadelphia.

Make plans now to attend Alumni Weekend 2009, which will be held May 15–16, 2009 and celebrate reunions for classes ending in “4” and “9.”



**1** Alumni participated in the traditional Parade of Classes.

**2** Penn Dental Medicine Overseer Dr. Joseph Gian-Grasso (C’67, D’71) and his wife, Janice, with Dr. Joseph Fiorellini, Chair of the Department of Periodontics.

**3** Penn President Amy Gutmann visited with Penn Dental Medicine alumni during the Alumni Picnic; pictured with Dr. Irving Rothstein (C’38, D’41).

**4** The Penn Glee Club performed for Penn Dental Medicine alumni during the weekend’s festivities.



Photo credit: Candace diCarlo







**5** The Union League of Philadelphia provided a beautiful backdrop for reunion class dinners.



**6** Class of 1983 members, Drs. David Tarica, Scott Danoff, and Paul Feldman celebrate their 25th Reunion at the reunion class dinner.

**7** Class of 1983. 1st row (left to right): Shari Samansky Summers, Valerie Eisenberg Yasner, Robin Cohen Feinberg, Rhonda Malater Karter, Gail Schupak, Linda E. Rigali, Wendy S. Kane, and Pamela Feld-Randel; 2nd row (left to right): Jay A. Valenci, Walter F. Russo, Michael D. Yasner, K. Scott Danoff, Robert A. Dores, Robert J. Kubaska Mitchell L. Kahn, Harry Randel, and Scott J. Chanin; 3rd row (left to right): Paul R. Feldman, Harry E. Rosenstein, Jack C. Yu, David S. Tarica, David Stall, and Allen D. Pearlman.



**8** Class of 1958. 1st row (left to right): Edward G. Bednar, Ronald S. Leventhal, Charles W. Tager, Myron I. Schaffer, Gilbert Shuster, Robert B. Levin, Theodore L. West, and Arnold Katz; 2nd row (left to right): Joseph R. Pastorello, Richard S. Altman, Robert J. Jarosz, Abe M. Finton, Herbert A. Schneider, and Marvin H. Sitrin; 3rd Row (left to right): Edward J. Strow, Jr., Rowland A. Hutchinson, and Alvin S. Morrison.



#### ALUMNI PROFILE: Leonard A. Cole (D'57)

Most people would consider earning a dental degree and launching a successful private practice spanning nearly 40 years a lifetime's accomplishment. For Penn Dental Medicine alumnus Leonard Cole (D'57), however, those successes were just one facet of a remarkable high-profile career. The author of seven books and editor of one, Dr. Cole also holds a Ph.D. in political science from Columbia University and serves as an adjunct professor of political science at Rutgers University, Newark. In addition, he is a nationally recognized expert on bioterrorism and terror medicine — a new medical discipline that has emerged as a result of the global proliferation of terrorism — about which he has testified before congress, presented to numerous government agencies, and commented in the national media.

"Terror medicine encompasses the distinctive approaches relating to medicine and medical management that are generated by terrorist attacks," explains Dr. Cole, one of the 2008 recipients of the Penn Dental Medicine Alumni Awards of Merit, who practiced general dentistry in Hawthorne, N.J. from 1961 to 1999. "It consists of four broad areas: preparedness, incident management, mechanisms of injuries and responses, and psychological consequences."

According to Dr. Cole, a terrorist attack presents many unique medical, dental, psychological, and logistical challenges. Yet, he feels most American health care institutions are ill equipped to handle those challenges.

"The physical and psychological wounds caused by terrorist attacks are very different from trauma generally seen in the ER," he says. "When a patient comes in with 100 penetration wounds from nails and 70 percent of his body is burned and there are multiple points of bleeding, what do you do first? Moreover, how does an emergency room handle the potentially

hundreds of individuals who show up at once as was the case when terrorist attacks occurred in Madrid and London. Preparations for these kinds of challenges are largely unmet in most major cities."

Dr. Cole's concern about America's ability to respond to terrorism was heightened by the 9/11 attacks and the subsequent release of anthrax letters, several of which originated from his home state of New Jersey. His book, *The Anthrax Letters: A Medical Detective Story*, chronicles those bioterror attacks and examines the response of the government and public health system as well as the ongoing implications of the events. The book was named a 2004 Honor Book by the New Jersey Council for the Humanities.

"I felt America had become increasingly vulnerable and I thought that as a nation, we could learn a great deal from Israel, which has a long history of dealing with terrorism." His research led him to write *Terror: How Israel Has Coped and What America Can Learn* (published in 2007), which explores how different segments of Israeli society have coped with terrorism from preparedness to emergency response and even long-term psychological care.

"As a result of their long exposure to terrorism, Israelis have a heightened sense of alertness," he says. "In the United States, if a seven year old sees a backpack sitting in the playground and doesn't know who it belongs to, he will likely ignore it. If that situation occurred in Israel, the child would automatically alert a teacher or other adult."

He is also concerned that our health care institutions have become alarmingly lax about preparing for

possible terrorism. He recently co-edited *Essentials of Terror Medicine*, to be published in November, in an effort to ensure that health professionals have the

practical information they need to function effectively in case of a terrorist attack. The book includes contributions from 35 international experts in relevant fields, many of whom have hands-on experience managing the medical impact of terrorism.

"People don't want to dwell on bad news, particularly when they don't perceive an imminent threat, but there needs to be a sense of awareness as well as an understanding of

the basic principles of prevention and what to do in case of attack."

Dr. Cole believes that at a minimum, every hospital should have a full-time staffer devoted to emergency preparedness, which includes being able to increase normal capacity by at least 20 percent in case of a sudden influx of victims. He is also a strong advocate of conducting rehearsals for biological, chemical, and other disaster events according to universal procedures.

While Dr. Cole acknowledges that the aspects of his career for which he is best known are not directly related to dentistry, he credits his education at Penn Dental Medicine as the springboard for many of his accomplishments. "At Penn, I received a comprehensive education about the basic health sciences as well as patient care. What I learned there helped me to better understand the issues as I began to research and write about science and public policy." Moreover, he credits his Penn training with burnishing a commitment to heal and help others. "Actually, I think my efforts more broadly to protect Americans from harm have been related to that education as well."



Leonard Cole (D'57)



# Alumni Gatherings

## SENIOR FAREWELL 2008

The Penn Dental Medicine Alumni Society officially welcomed the Class of 2008 into its national and international community of alumni at Senior Farewell 2008. Held May 13 at The Ritz-Carlton, Philadelphia, more than 260 alumni, faculty, students, and staff gathered for the evening's festivities, which included a

cocktail reception, dinner, dancing, and the presentation of teaching awards voted on by the senior class (see below for award honorees). Alumni are encouraged to save the date for Senior Farewell 2009 to be held May 12.



Derek Conover (D'o8), Amanda Romsa (D'o8) and Christine Bender (D'o8)



Jennifer Schear (D'o8), Lindi Orlin (D'o8), Dr. Nathan Kobrin, and Marie Falcone (D'o8).

^ Recipients of the 2008 Teaching Awards: Dr. Elliot Hersh, Professor of Oral Surgery and Pharmacology, The Basic Science Award; Dr. Arthur Kuperstein, Assistant Professor of Oral Medicine-Clinician Educator, The Senior Outstanding Teaching Award; Dr. Margrit Maggio (D'87), Assistant Professor of Restorative Dentistry-Clinician Educator, The Earle Bank Hoyt Award; Dr. Paul Berson (GD'77), Clinical Assistant Professor of Restorative Dentistry, The Joseph L.T. Appleton Award; and Dr. Nathan Kobrin, Clinical Associate Professor of Restorative Dentistry, The Robert E. DeRevere Award.



Saman Delgoei (D'o8), Dr. Olivia Sheridan (D'90, GD'91), and Monica Parekh (D'o8)



Dr. Richard Dakin (D'59) and Dr. Beverly Crawford.



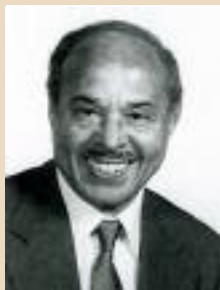
Van Orenstein (D'o8), a guest, and Brian Schobel (D'o8).



# Alumni

## CLASS NOTES

### 1950's



**Marshall D. Vaughters (D'51)** was the recipient of The William K. Collins Sr. Meritorious Service Award, presented by the North East Regional Board of Dental Examiners in recognition and appreciation of 30 years of dedicated and devoted service to Board. Dr. Vaughters received the Award in June, during the Board's Annual Meeting in Orlando, Fla. Dr. Vaughters, who maintains a general dentistry practice in Philadelphia, is a member of the medical staff of the Mercy Hospital of Philadelphia and a Fellow of the Academy of General Dentistry, the Pierre Fauchard Academy, and the American College of Dentists. He and his wife reside in Ardmore, Pa.

**Seymour Oliet (D'51)** was the 2008 recipient of the American Association of Endodontists (AAE) Edgar D. Coolidge Award, the AAE's highest honor, given to an individual who has displayed exemplary dedication to dentistry and to endodontics and who has been active in the AAE throughout his career. Dr. Oliet has been active in organized dentistry for more than 50 years, serving both as a leader within the AAE and a mentor for a generation of endodontists as an educator and researcher. Dr. Oliet is Professor Emeritus of Endodontics at Penn Dental Medicine and was the School's founding Chair of the Department of Endodontics. A member of the Philadelphia Country Dental Society throughout his professional lifetime, he was also the founder of the Pennsylvania Academy of Endodontics.

### 1970's

**Louis E. Rossman (D'75, GD'77)** was elected president of the American Association of Endodontists during its 2008 Annual Session, held April 9–12 in Vancouver, British Columbia, Canada. Dr. Rossman has been actively involved in the activities of the Association for years, serving as president-elect from 2007–2008, vice president from 2006–2007, secretary from 2005–2006, treasurer from 2004–2005, and District I director from 2000–2003. Dr. Rossman is looking to place an emphasis on three different areas during his tenure — education/science, clinical practice and spirit. Dr. Rossman maintains a full-time endodontic practice in Philadelphia and is a Clinical Professor of Endodontics at Penn Dental Medicine and serves as a consultant in endodontics for the Children's Hospital of Philadelphia.

**Cary J. Limberakis (C'73, D'78)** was honored for a highly successful year as President of the Montgomery-Bucks Dental Society at the Annual President's dinner, and at the ADA Annual Session in San Antonio, Dr. Limberakis will be conferred Fellowships from the International College of Dentists and the American College of Dentists.

**Ronald L. Rupp (D'76)** has joined the American Dental Education Association (ADEA) as Senior Director of External Relations and Institutional Advancement. Dr. Rupp will be responsible for developing and managing ADEA's corporate partnerships and representing ADEA externally to key partners in the allied, predoctoral, and postdoctoral dental education communities. Prior to joining the ADEA, Dr. Rupp worked for GlaxoSmithKline (GSK) Consumer Healthcare, where he spent 10 years directing GSK's corporate professional relations and for 18 years he practiced general dentistry in New Jersey.

After 15 years in private practice together in Westchester County, N.Y., **Robert J. Oro (D'79)** and his wife **Debra (D'79)** moved to Oro Valley, Ariz., 12 years ago "to get a life," establishing their practice in Oro Valley in 2000. Dr. Oro completed a two-year general practice residency at Brookdale Hospital Medical Center, Brooklyn, N.Y. in 1981, and in 1988, earned his MAGD (Master Academy of General Dentistry). Dr. Oro is a Delegate at Large of the Board of Directors of the southern Arizona Dental Society, a component of the Arizona Dental Association. He is also a community activist, children's advocate and business leader, as well as a weekly columnist for the *Arizona Daily Star Newspaper*.

Thinking back and writing about his time at Penn Dental Medicine after recently seeing a former teacher from his time at Penn, Dr. Robert Oro wrote: "... I have reached a point in life when I have realized just how special some things or experiences are. To those of you who were around SDM '79, you should be clear about the "specialness" of that era. ... Thanks to all those teachers who shared so much and believed that I should know it.... Thank you for sharing your knowledge but more importantly your world with me during our years at SDM. When we see each other, it is always like we saw each other "yesterday." The SDM, circa '79, was that special."

### 1980's

**Peter Auster (D'80)** is currently serving as President of the Empire State Academy of Cosmetic Dentistry — the New York, New Jersey, and Pennsylvania affiliate of the American Academy of Cosmetic Dentistry (AACD), established to further the art and science of cosmetic dentistry in the tri-state area. In addition, Dr. Auster recently received the AACD Outstanding Service Award and was named to the AACD President's Honor Roll.

**Stuart Hoffman (D'89)** graduated from University of Southern California (USC)'s Advanced Orthodontic Program/MS Craniofacial Biology program in 1991 and married Lisa Abramson (from the Philadelphia area) in the same year. Dr. Hoffman established his own orthodontic practice (Calabasas Orthodontics) in 1992 and has been working and living in Calabasas, Calif., for the past 17 years. He is a part-time faculty member of USC's orthodontic program and received his American Board of Orthodontics certification in 2006. Dr. Hoffman is the current President Elect of the San Fernando Valley Chapter of the American Association of Orthodontics. He and his wife have been actively involved in running charity golf tournaments, most recently for a domestic abuse shelter in Southern California, and he encourages any-

### Share Your News

We want to hear from you. Share your news on personal and professional accomplishments with your fellow Penn Dental Medicine alumni through the Class Notes section of the Penn Dental Journal. We have made it easy for you to make a submission — simply go to [www.dental.upenn.edu/alumni/](http://www.dental.upenn.edu/alumni/) where you can quickly send us your information — we welcome photos as well. Or, you can send

your submissions to:  
Mary McCarron  
Robert Schattner Center  
University of Pennsylvania School of Dental Medicine  
Office of Development and Alumni Relations  
240 South 40th Street  
Philadelphia, PA 19104-6030  
215-898-8951 (p)  
[mrmccarr@ben.dev.upenn.edu](mailto:mrmccarr@ben.dev.upenn.edu)



(left to right) Dr. Michael McGuire, past President of the American Academy of Periodontology; Dr. Ernesto Lee, (GD'87), Clinical Professor of Periodontics and Director of the Postdoctoral Periodontal Prosthesis Program, Penn Dental Medicine, and Dr. Harold Baumgarten (D'78, GD'82), Clinical Professor of Periodontics, Penn Dental Medicine.

**Dr. Ernesto Lee (GD'87)**, Clinical Professor of Periodontics and Director of the Postdoctoral Periodontal Prosthesis Program at Penn Dental Medicine and **Dr. Harold Baumgarten (D'77, GD'82)**, also a Clinical Professor of Periodontics at the School, traveled to Panama City, Panama, in January to lecture as part of a special conference organized by other Penn Dental Medicine alumni living and practicing there. Held in conjunction with the Annual Meeting of the Panama Dental Society, the Congreso Isteño de Odontología & Expodental was a three-day, international meeting focusing on state-of-the-art esthetic and restorative dentistry. The organizing committee for the conference was chaired by Panama-resident **Dr. Jose Simons (GD'79)**, with the assistance of **Drs. Luciano Gomez (GD'80)** and **Gustavo Viggiano (GD'89, GD'91)**, both of whom live in Panama as well. The event, which also included an exhibit of nearly 100 vendors, drew approximately 600 attendees.

one who wants to catch up, to email him at [drhoffman@forbraces.com](mailto:drhoffman@forbraces.com).

**Nancy Jacobson (D'89)** and co-author Dr. Charles Frank published a paper in the April 2008 edition of *JADA* titled "The Instant Orthodontic Myth: An Ethical Quandary." Dr. Jacobson is currently an Associate Professor and Assistant Director of an AEGD for the University of Florida College of Dentistry, Jacksonville Branch.

## 1990's

**Peter J. Theodorou (GD'98, D'01, GD'01)** has been selected to receive the American Dental Association's 2008 Golden Apple Award for New Dentist Leadership. Dr. Theodorou, an orthodontist practicing in Manhattan, also received the 2007 NYSDA New Dentist Leadership Award, which recognizes a dentist less than 10 years out of dental school who is actively involved in organized dentistry and in the community.

Dr. Theodorou is a community volunteer and director of operations for the New York City division of Marines Helping Marines, a national program that provides care packages to wounded and recover-

ing marines and soldiers at major military hospitals. Dr. Theodorou is himself a former Marine, who was decorated for his service in Operation Iraqi Freedom. He and his brother Dr. Spero Theodorou, a plastic surgeon, founded Marine Assist, a foundation that offers free plastic surgery and dental services to military personnel who have served in Afghanistan and Iraq.

Dr. Theodorou is a member of New York County Dental Society, serves on the society's Membership Committee and has been a volunteer with the Greater New York Dental Meeting. In addition to his private practice, Dr. Theodorou is section chief in the Department of Orthodontics at St. Luke's Roosevelt Hospital Center, University Hospital of Columbia University College of Physicians and Surgeons.

**Jonathan Amberg (D'99)** and his wife, **Kameron Benson Amberg (D'03)**, are proud to announce the birth of their third child, Curtis, on June 20, 2008. Curtis joins big brother Lucas (1/23/04) and big sister Josie (7/12/06). Jon, Kammy, and family live in Northern Arizona, where Jon recently established a general dentistry practice. Kammy currently stays home with their three young children.

## MAKING HISTORY ... ONE GIFT AT A TIME

One of the nonfinancial goals of *Making History: The Campaign for Penn* is to grow the number of alumni who support Penn's commitment to educational excellence through their annual gifts. Please help sustain Penn Dental Medicine's leadership in the profession by making your gift before June 30, the end of Penn's fiscal year.

As the cost of excellence continues to rise, so does the need for increased support of the Dental Annual Giving Fund. Whatever the level of your support, your gift will make a difference to our students. For your convenience, gifts to the Dental Annual Giving Fund can be made in several ways:

- **CALL** the Office of Development and Alumni Relations at 215-898-8951 and make a gift with a credit card.
- **VISIT** [www.upenn.edu/gifts](http://www.upenn.edu/gifts) for a secure online credit card transaction.
- **SEND** your check, made payable to the "Trustees of the University of Pennsylvania," to: Office of Development and Alumni Relations, Robert Schattner Center, University of Pennsylvania, School of Dental Medicine, 240 South 40th Street, Philadelphia, PA 19104-6030.
- **TRANSFER** appreciated securities for substantial tax benefits. You will receive an income tax deduction equal to the fair market value of the stock on the effective date of the gift, while also avoiding capital gains tax on the transfer. For

transfer instructions, please contact the Office of the Treasurer at 215-898-7254 or [gifts@pobox.upenn.edu](mailto:gifts@pobox.upenn.edu). This will help to ensure both timely receipt and appropriate allocation of the gift.

For more information, please contact the Office of Development and Alumni Relations at 215-898-8951.



**Penn  
Dental Medicine**

# In Memoriam

## Dr. Bal Krishna Goyal Remembered

It is with a great sense of loss and deep appreciation that Penn Dental Medicine remembers Dr. Bal Krishna Goyal (D'81) — a highly respected member of the School's faculty, who died April 27, 2008 at the age of 72. Throughout his 33-year tenure with Penn Dental Medicine, Dr. Goyal, Clinical Associate Professor of Restorative Dentistry, shared a depth of skill and knowledge in treatment planning and clinical care as well as the technical phases of removable prosthodontics. Most recently, he served as a consultant for removable prosthodontics in the School's undergraduate student clinics.



"The few months that I personally had the opportunity to work with and get to know Dr. Goyal gave me the opportunity to learn what an outstanding teacher and clinician he was," says Dr. Markus Blatz, Chairman of the Department of Preventive and Restorative

Sciences. "His unconditional commitment to excellence in dentistry and in teaching was nothing short of inspirational. He certainly inspired me and will continue to do so throughout my career as an educator."

All those who worked with Dr. Goyal and learned from him shared similar sentiments. At a special memorial service, held at Penn Dental Medicine on September 16, former colleagues and students and friends and family gathered to remember and celebrate his life and contributions.

Dr. Raj Shah, Clinical Assistant Professor of Restorative Dentistry, recalled: "As his student, I always thought of him as a dedicated teacher with a Teflon-coated outside and a warm, kind-hearted inside. Forty years later, he continued to make the same impression on me, and I now realize that he was among the very best within our profession. I had the great opportunity to teach removable prosthodontics with him, and Dr. Goyal would weave together art, passion, and precision in an almost magical manner. He always maintained an unwavering dedication to making a difference in students' lives. He taught them to always search for excellence and made them believe in their ability to achieve the highest standards."

Dr. Nathan Kobrin, Clinical Associate Professor of Restorative Dentistry, noted that when he joined the faculty in 1993 it was Dr. Goyal who inspired his teaching. "I watched in awe as he imparted his vast knowledge not only to his students, but to all the faculty as well," he said. "I soon realized that I was learning at the feet of a master educator. Whatever success I have achieved as an instructor is directly due to the example set by this man and my decision to emulate his style of teaching."

"The students recognized his passion for teaching and total commitment to their welfare," he continued. "They grew to develop a deep respect and sincere love for the man, who not only trained them to be outstanding clinicians, but also molded their characters and their outlook on life."

Known for his always meticulous appearance, signature bowtie, and bright smile, Dr. Goyal pursued his hobbies and personal interests — from drawing and painting, cricket, and ping pong to horseback and motorcycle riding — with passion as well. A dedicated husband, father, and grandfather, Dr. Goyal is survived by his wife, Dr. Suman Goyal; his daughter, Kavita; his son, Kunaal; and three grandchildren.

"He was one of a kind and one of nature's true gentlemen," added Dr. Kobrin. "His memory will live forever in the minds of the people whose lives he touched."

A memorial fund has been established in Dr. Goyal's name. Contributions can be sent to the Robert Schattner Center, University of Pennsylvania School of Dental Medicine, Department of Preventive and Restorative Sciences, 240 South 40th Street, Philadelphia, PA 19103. Checks are payable to Trustees of the University of Pennsylvania, Dr. Bal Goyal Memorial Fund.

## Charles Bennett Keil (D'32)

Stowe, VT, May 2, 2008

## Milton Eisenberg (D'33)

Piermont, NY, April 30, 2007

## Leah Blair Adilman (DH'39)

Atlanta, GA, January 26, 2007

## Daniel Glaseroff (D'41)

McKinleyville, CA, April 22, 2008

## Howard B. Grayson (D'41)

Larchmont, NY, May 14, 2006

## Audrey Cobb Torrance (DH'41)

Warren, PA, January 12, 2008

## Irving Koppel (D'42)

Monroe Township, NJ, April 3, 2008

## Erwin J. Silverglide (C'39, D'42)

Clearwater, FL, March 5, 2008

## Milton Sandler (C'42, D'43)

Elkins Park, PA, May 31, 2008

## Raymond D. Alexander (D'45)

South River, NJ, July 18, 2008

## Robert J. Taylor, Jr. (D'46)

Castleton, NY, October 28, 2006

## Carolyn Cox Partch (DH'49)

Houston, TX, March 7, 2008

## Howard G. Kimball (D'50)

Walden, NY, November 29, 2007

## S. Arthur Rybeck (D'50)

Wheeling, WV, January 18, 2008

## Harold D. Toubman (C'45, D'50)

West Hartford, CT, May 5, 2008

*Survived by his son, Gary B. Toubman (D'80)*

## Rosalie Luntz Lappen (DH'51)

Jamaica Plain, MA, August 30, 2007

## Joseph J. Lenczycki (D'51)

Wellesley, MA, May 18, 2008

## Robert W. Baker, Sr. (D'52, MS)

Ithaca, NY, October 20, 2008

## George K. Brazill, Jr. (D'53)

New York, NY, May 17, 2006

## Stanley H. Balter (D'56)

Spring Valley, NY, November 9, 2007

## Ronald E. Genther, (C'53, D'56)

Madison, CT, February 5, 2008

## Paul C. Ingrassi (D'57)

Scranton, PA, December 15, 2007

*Survived by his wife, Patricia Gallagher Ingrassi (DH'55)*

## H. Leslie Levine (GD'57)

Beverly Hills, CA, May 23, 2008

## Dolores Mylin Good (DH'58)

Murrysville, PA, November 9, 2007

## Charles Tenen (D'58)

Irvine, CA, July 27, 2006

## William H. Phillips (D'59)

Wayne, PA, July 22, 2008

## Gerald D. Verdi (D'60)

Louisville, KY, December 28, 2007

## Morris P. Ruben (GD'61)

Brookline, MA, October 17, 2006

## Frank DiPlacido, Jr. (D'62)

Fort Myers, Fla., March 14, 2008

## Mark A. Mintzer (D'70)

New York, NY, July 22, 2008

## Frederic J. Berman (D'73)

Palm Beach, FL, July 19, 2008

## Bal Krishna Goyal (D'81)

Broomall, PA, April 27, 2008

## Jonathan A. Ship (C'80, D'84)

Briarcliff Manor, NY, April 22, 2008

*Editor's Note:* In the Spring 2008 issue of the *Penn Dental Journal*, we were honored to have Penn Dental Medicine alumnus Dr. Jonathan A. Ship (C'80, D'84) share his perspective with us as part of a feature article on academic medicine, which published near the time of his death in April. We wanted to acknowledge his generosity in taking the time, despite his illness, to share the rewards he found through academic dentistry with us so we could share them with the Penn Dental Medicine community. Dr. Ship's accomplishments in and contributions to dental medicine will surely continue to be an inspiration to many. We extend our condolences to the entire Ship family — you remain in our thoughts.



## 2009 ALUMNI AWARD OF MERIT NOMINATIONS SOUGHT

Nominations are being sought for recipients of the 2009 Alumni Award of Merit, which will be presented during Alumni Weekend 2009, May 15–16.

The Alumni Award of Merit recognizes love for and loyalty to the School of Dental Medicine, excellence in the profession of dentistry, and community involvement. The award is given to those graduates who have maintained their ties with the School through their support of alumni activities, who have demonstrated leadership in the dental profession, and who have fostered and maintained the ideals that the School of Dental Medicine has stood for since its founding.

Members of the Alumni Society Executive Committee will select the recipients from the pool of nominees. No more than five persons per year shall be honored with the Alumni Award of Merit.

Nominations are due no later than **DECEMBER 31, 2008**.

For more information or if you have any questions, please contact the Office of Development and Alumni Relations, 215-898-8952.

For a list of previous Alumni Award of Merit recipients, please visit [www.dental.upenn.edu/alumni/awards.html](http://www.dental.upenn.edu/alumni/awards.html).

Please send nomination letters to:  
Mary McCarron  
Office of Development and Alumni Relations  
Robert Schattner Center  
University of Pennsylvania  
School of Dental Medicine  
240 South 40th Street  
Philadelphia, PA 19104-6030

## ALUMNI CONNECTIONS

**Find a former classmate and sign up for an email forwarding service** through QuakerNet, the Penn Alumni Online Community. Register free at [www.alumniconnections.com/penn](http://www.alumniconnections.com/penn) and search the Online Directory — a great resource for personal and professional networking and an easy way to keep up-to-date on fellow alumni. You can also sign up for a permanent email forwarding service, which will forward messages received at your permanent Penn address to the email address of your choice.

**Update your alumni record** via QuakerNet, the Penn Alumni Online Community. Register free at [www.alumniconnections.com/penn](http://www.alumniconnections.com/penn). Or, contact Mary McCarron at 215-898-8951 or [mrsmccarr@ben.dev.upenn.edu](mailto:mrsmccarr@ben.dev.upenn.edu).

**Make a gift** through a secure online credit card transaction at [www.upenn.edu/gifts](http://www.upenn.edu/gifts).

**Find information on ways to support Penn Dental Medicine** at [www.dental.upenn.edu/alumni](http://www.dental.upenn.edu/alumni). Or, contact the Office of Development and Alumni Relations at 215-898-8952.

**Request a transcript** through the School's Office of Student Affairs at 215-898-8940 if you graduated in 2000 or earlier. If you graduated in 2001 or later, visit the Office of the University Registrar's web site at [www.upenn.edu/registrar/transcripts/transcripts.html](http://www.upenn.edu/registrar/transcripts/transcripts.html) or call 215-898-6636.

**Order a replacement diploma** through the Office of the Secretary's web site at [www.upenn.edu/secretary/diplomas/#replace](http://www.upenn.edu/secretary/diplomas/#replace).

**Post or search dental career opportunities** at [www.dental.upenn.edu/alumni/jobs.html](http://www.dental.upenn.edu/alumni/jobs.html).

**Purchase Penn Dental Medicine apparel** at [www.clubcolors.com/penn\\_dentalmedicine](http://www.clubcolors.com/penn_dentalmedicine). You can choose from a great selection of merchandise with the official Penn Dental Medicine logo including polos, sweatshirts, outerwear, bags and luggage, and gift items.

**Obtain a Penn Alumni Card** at [www.upenn.edu/penncard/card/obtain\\_alumni.html](http://www.upenn.edu/penncard/card/obtain_alumni.html). The Penn Alumni Card offers a myriad of benefits, including access to the Penn Libraries (borrowing privileges or access to online resources not included) and discounts on admission to the Morris Arboretum, Class of 1923 Ice Rink, and University of Pennsylvania Museum. The card, valid for 10 years, costs \$20.

**Learn about the Alumni Council on Admissions**, which guides children and grandchildren of Penn alumni through every step of the Penn undergraduate admissions process, at [www.alumni.upenn.edu/aca](http://www.alumni.upenn.edu/aca).

**Discover the variety of resources and benefits** available to Penn alumni, including discounts on services, at [www.alumni.upenn.edu/services](http://www.alumni.upenn.edu/services).

**Please address any correspondence to:**  
Office of Development and Alumni Relations  
Robert Schattner Center  
University of Pennsylvania  
School of Dental Medicine  
240 South 40th Street  
Philadelphia, PA 19104-6030

## **Penn Dental Medicine Alumni Society 2008–09 Executive Committee**

Spencer-Carl Saint Cyr, D'97  
*President*

Bernard W. Kurek, D'73, WMP'03, WEV'04  
*First Vice-President*

Laura Minsk, C'88, GD'94  
*Second Vice-President*

Tara Sexton, D'88  
*Immediate Past President*

Patti Lee Werther, D'78, GED'78, GD'81  
*Secretary-Treasurer*

### **Members-at-Large**

John David Beckwith, D'87  
Jeffrey R. Blum, D'80  
D. Walter Cohen, C'47, D'50  
Marc Anthony Cozzarin, D'87  
Robert J. Diecidue, D'88  
Aaron Elkowitz, D'91, GD'93, GD'94  
Joseph W. Foote, D'74, GD'80  
Howard P. Fraiman, D'91, GD'93, GD'94  
Marshall J. Goldin, C'60, D'64  
Ronald J. Gutman, D'74  
Kathleen E. Herb, C'88, D'92  
Erika Johnston, D'04  
Christine M. Landes, D'94  
Lawrence M. Levin, D'87, GD'92  
Keith D. Libou, D'84  
Jerald Samuel Matt, D'88  
Brian M. Schwab, D'06  
David Richard Silver, D'85, GD'86, GD'88  
Donald H. Silverman, D'73, WG'74  
Dean Ford Sophocles, D'87  
Robert Marc Stern, D'87  
Robert J. Tisot, GD'70  
Richard S. Tobey, Jr., D'75, GD'80  
Orhan C. Tuncay, GD'74  
Joshua B. Wolgin, D'98

### **Past Presidents (last 7 years)**

Marc B. Ackerman, D'98  
Anna Kornbrot, D'79, GD'82  
Lewis E. Proffitt, D'73, WG'80  
Margrit M. Maggio, D'87  
Laurence G. Chacker, D'85  
Michael D. Yasner, C'79, D'83, GD'84, GD'86

### **Ex officio Member**

Dr. Jaclyn M. Gleber, DH'74

### **Student Representatives**

T.J. Filip, D'09  
Student Council President

Samuel P. Tam, D'09  
Class of 2009 President

April Wallden, D'11  
Class of 2011 President

### **School Administration**

Thomas Sollecito, D'89, GD'91  
*Interim Dean*

Kathleen Watson  
*Interim Director, Development and  
Alumni Relations*

Mary McCarron  
*Annual Giving and Alumni Programs*

## **Penn Dental Medicine Board of Overseers 2008–09**

William W. M. Cheung, D'81, GD'82,  
*Chair*

Stanley M. Bergman  
Laurence B. Brody, C'52, D'56  
Richard Copell, D'80  
Matthew J. Doyle, Ph.D.  
Joseph E. Gian-Grasso, C'67, D'71  
Linda J. Gilliam, D'89  
Frances Bondi Glenn, D'56  
Lawrence Kessler, C'66, D'70  
Martin D. Levin, D'72, GD'74  
Roger Levin  
Robert P. Levy, C'52  
Glenn R. Oxner  
Bernard J. Poussot  
Lewis E. Proffitt, D'73, WG'80  
Louis E. Rossman, D'75, GD'77  
Irving M. Rothstein, C'38, D'41  
Robert I. Schattner, D'48  
David S. Tarica, D'83

### **Ex Officio Member**

Spencer-Carl Saint-Cyr, D'97,  
*Alumni Society President*



The Martin & Geneva Shepherd and Isidore & Freida Schattner (parents of Dr. Robert Schattner (D'58) and his wife Kay) Memorial Fountain in The Fonseca Gardens of the Robert Schattner Center.

The University of Pennsylvania values diversity and seeks talented students, faculty, and staff from diverse backgrounds. The University of Pennsylvania does not discriminate on the basis of race, sex, sexual orientation, gender identity, religion, color, national or ethnic origin, age, disability, or status as a Vietnam Era Veteran or disabled veteran in the administration of educational policies, programs or activities; admission policies; scholarship and loan awards; athletic or other University administered programs or employment. Questions or complaints regarding this policy should be directed to Executive Director, Office of Affirmative Action and Equal Opportunity Programs, 3600 Chestnut St., Sansom Place East, Suite 228, Philadelphia, PA 19104-6106 or by calling (215) 898-6993 (Voice) or (215) 898-7803 (TDD), [www.upenn.edu/affirm-action](http://www.upenn.edu/affirm-action).

# Calendar

## OF EVENTS

### Alumni Programs & Events

#### December 3, 2008

##### Greater New York Dental Meeting

###### Alumni Reception

New York Marriott Marquis  
Cantor-Jolson Room, 9th Floor  
New York, NY  
5:30–7:00 p.m.

#### January 30, 2009

##### Yankee Dental Congress

###### Alumni Reception

Location and Time to be Announced  
Boston, Mass.

#### May 12, 2009

##### Senior Farewell 2009

Location and Time to be Announced  
Philadelphia, Pa.

#### May 15–16, 2009

##### Alumni Weekend 2009

Reunions for classes ending in “4”  
and “9”  
Philadelphia, Pa.  
[www.dental.upenn.edu/AW2009](http://www.dental.upenn.edu/AW2009)

### Continuing Dental Education

*Penn Dental Medicine alumni receive  
a 25% discount on course tuition.*

#### November 6 and November 7, 2008

##### Overview of Contemporary Orthodontics

Presented by Robert L. Vanarsdall,  
DDS; and Antonino G. Secchi,  
DMD, MS

8 a.m.–4 p.m., November 6

8 a.m.–3 p.m., November 7

13 lecture credit hours

Hillel of Greater  
Philadelphia/Steinhardt Hall  
215 South 39th Street  
Philadelphia, Pa.

#### November 14, 2008

##### New Therapies and Current Controversies in Dentistry

Presented by Markus B. Blatz, DMD,  
PhD; Elliot V. Hersh, DMD, MS, PhD;  
and Robert L. Vanarsdall, DDS; and  
David C. Stanton, DMD, MD, FACS

9 a.m.–5 p.m.

7 lecture credit hours

DoubleTree Guest Suites Philadelphia  
West

640 West Germantown Pike  
Plymouth Meeting, Pa.

#### November 22, 2008

##### Oral Mucosal Diseases: What Every Dentist Needs to Know

Presented by Eric T. Stoopler, DMD

9 a.m.–1 p.m.

4 lecture credit hours

The Robert Schattner Center

Penn Dental Medicine

240 South 40th Street

Philadelphia, Pa.

#### December 6, 2008

##### Diagnosis and Management of the Complex Geriatric Patient with Oral Disease

Presented by Martin S. Greenberg,  
DDS; and Joan I. Gluch, RDH, PhD

8 a.m.–3 p.m.

6 lecture credit hours

The Robert Schattner Center

Penn Dental Medicine

240 South 40th Street

Philadelphia, Pa.

#### December 13, 2008

##### Digital Dental Photography

Presented by Michael T. Bellerino, CDT

9 a.m.–5 p.m.

5 lecture credit hours and 2

hands-on credit hours

The Robert Schattner Center

Penn Dental Medicine

240 South 40th Street

Philadelphia, Pa.

*For more information on these  
and other Penn Dental Medicine  
continuing education programs,  
visit [www.dental.upenn.edu/lifelong](http://www.dental.upenn.edu/lifelong)  
or call toll free to 866-736-6233.*

[www.dental.upenn.edu](http://www.dental.upenn.edu)



Robert Schattner Center  
University of Pennsylvania  
School of Dental Medicine  
240 South 40th Street  
Philadelphia, PA 19104-6030

Non-Profit Org.  
U.S. Postage  
PAID  
Permit No. 2563  
Philadelphia, PA